



REPUBLIC OF THE GAMBIA

## THE GAMBIA CONSUMER PRICE INDEX (CPI) JANUARY 2019



The Gambia Bureau of Statistics is very pleased to deliver to users the new Consumer Price Index (CPI) based in 2004 that replace the previous one which was based in 1974. The CPI is published every month by the 15th

|   |   |              |               |               |               |               |               | Changes in % Over |             |
|---|---|--------------|---------------|---------------|---------------|---------------|---------------|-------------------|-------------|
|   |   |              |               |               |               |               |               | 1                 | Over 12     |
|   | ALL ITEM (NEW SERIES; 2004=100)                                   | Weights      | Jan_2018      | Oct_2018      | Nov_2018      | Dec_2018      | Jan_2019      | Month             | Months      |
|   | <b>OVERALL INDEX</b>  | <b>61841</b> | <b>199.61</b> | <b>208.81</b> | <b>209.51</b> | <b>210.93</b> | <b>211.75</b> | <b>0.39</b>       | <b>6.08</b> |
| 01                                      | Food and Non-Alcoholic Beverages                                  | 33837        | 226.11        | 236.88        | 237.61        | 239.13        | 240.11        | 0.41              | 6.19        |
| 011                                     | Food  | 32914        | 228.53        | 239.52        | 240.27        | 241.83        | 242.83        | 0.41              | 6.25        |
| 0111                                    | Bread & Cereals   | 7891         | 223.46        | 236.35        | 237.21        | 239.18        | 240.15        | 0.40              | 7.47        |
| 0112                                    | Meat  | 8217         | 259.01        | 273.07        | 273.41        | 275.31        | 276.57        | 0.46              | 6.78        |
| 0113                                    | Fish  | 2226         | 196.29        | 208.99        | 209.60        | 211.59        | 212.34        | 0.35              | 8.18        |
| 0114                                    | Milk, Cheese and Eggs   | 1462         | 171.12        | 179.83        | 180.12        | 181.73        | 182.41        | 0.37              | 6.60        |
| 0115                                    | Oils and Fats   | 3469         | 257.36        | 268.39        | 269.71        | 270.58        | 272.41        | 0.68              | 5.85        |
| 0116                                    | Fruits & Nuts   | 1445         | 214.97        | 231.84        | 232.73        | 234.38        | 235.12        | 0.32              | 9.37        |
| 0117                                    | Vegetables, Root Crops & Tubers                                   | 4533         | 214.92        | 219.89        | 221.07        | 222.13        | 222.84        | 0.32              | 3.68        |
| 0118                                    | Sugars, Jam, Honey & Sweet  | 1420         | 260.25        | 264.69        | 264.95        | 266.01        | 266.70        | 0.26              | 2.48        |
| 0119                                    | Other Food Products   | 2248         | 176.22        | 181.45        | 182.28        | 182.90        | 183.21        | 0.17              | 3.97        |
| 012                                     | Non-Alcoholic Beverages   | 923          | 139.07        | 142.10        | 142.32        | 142.54        | 142.56        | 0.01              | 2.51        |
| 02                                      | Alcoholic Beverages, Tobacco and Narcotics                        | 416          | 122.97        | 127.83        | 124.67        | 124.69        | 124.73        | 0.03              | 1.43        |
| 03                                      | Clothing, Textile and Footwear                                    | 6911         | 158.98        | 167.89        | 168.92        | 170.33        | 171.53        | 0.71              | 7.90        |
| 031                                     | Clothing, Garments and Tailoring Services                         | 5434         | 154.65        | 162.73        | 163.65        | 164.95        | 166.48        | 0.93              | 7.65        |
| 032                                     | Footwear  | 1477         | 174.89        | 186.89        | 188.29        | 190.13        | 190.13        | 0.00              | 8.71        |
| 04                                      | Housing, Water, Electricity, Gas and Other Fuels                  | 2089         | 192.92        | 202.00        | 202.70        | 203.87        | 205.44        | 0.77              | 6.49        |
| 042                                     | Actual Rent   | 498          | 143.27        | 147.38        | 147.38        | 147.57        | 147.57        | 0.00              | 3.01        |
| 043                                     | Electricity, Gas and Other Fuels                                  | 1431         | 213.90        | 225.63        | 226.66        | 228.29        | 230.58        | 1.00              | 7.80        |
| 05                                      | Furnishing, Household Equipment and Routine Household Maintenance | 3215         | 147.74        | 153.09        | 153.75        | 154.23        | 154.58        | 0.23              | 4.63        |
| 06                                      | Health  | 728          | 139.33        | 140.50        | 140.53        | 140.92        | 140.92        | 0.00              | 1.14        |
| 07                                      | Transport   | 2706         | 234.32        | 241.20        | 242.12        | 242.38        | 241.76        | -0.25             | 3.18        |
| 08                                      | Communication   | 1822         | 105.22        | 105.26        | 105.26        | 105.26        | 105.27        | 0.01              | 0.05        |
| 09                                      | Recreation and Culture  | 957          | 140.67        | 144.11        | 144.22        | 145.44        | 145.55        | 0.08              | 3.47        |
| 10                                      | Education   | 918          | 110.11        | 110.66        | 110.66        | 110.66        | 110.66        | 0.00              | 0.50        |
| 11                                      | Restaurant and Hotel  | 222          | 207.93        | 224.09        | 224.09        | 226.31        | 227.42        | 0.49              | 9.37        |
| 12                                      | Miscellaneous Goods and Services                                  | 3639         | 245.96        | 262.44        | 263.75        | 267.34        | 268.23        | 0.34              | 9.06        |
| <b>12 MONTH MOVING AVERAGES</b>         |   |              | <b>193.66</b> | <b>203.09</b> | <b>204.16</b> | <b>205.22</b> | <b>206.23</b> | <b>0.52</b>       | <b>6.49</b> |
| <b>OVERALL INDEX</b>                    |   |              | <b>199.61</b> | <b>208.81</b> | <b>209.51</b> | <b>210.93</b> | <b>211.75</b> | <b>0.68</b>       | <b>6.08</b> |
| <b>FOOD AND NON-ALCOHOLIC BEVERAGES</b> |   |              | <b>226.11</b> | <b>236.88</b> | <b>237.61</b> | <b>239.13</b> | <b>240.11</b> | <b>0.64</b>       | <b>6.19</b> |
| <b>NON-FOOD PRODUCTS AND SERVICES</b>   |   |              | <b>165.43</b> | <b>172.60</b> | <b>173.25</b> | <b>174.55</b> | <b>175.16</b> | <b>0.75</b>       | <b>5.88</b> |

In January 2019, the overall Consumer Price Index was 211.75, a 0.39 percent increase over the December 2018 overall index of 210.93.

On an annual basis the overall index increased by 6.08 percent from January 2018 to January 2019. Food and Non-Alcoholic Beverages increased by 6.19 percent whilst Non-Food Products and Services rose by 5.88 percent.

From January 2018 to January 2019, within the Food and Non-Alcoholic Beverages, ‘Fruits and Nuts’ increased by 9.37 percent, ‘Fish and fish products’ increased by 8.18 percent, ‘Bread and Cereals’ increased by 7.47 percent, ‘Meat and meat product increased by 6.78 percent, and ‘Milk, Cheese and Eggs’ increased by 6.60 percent.

For the Non-Food items, major increases were recorded by ‘Restaurant and Hotel’, ‘Miscellaneous goods and Services’, ‘Footwear’, ‘Electricity, Gas and other Fuels’ and ‘Clothing, Garments and tailoring services’ which rose by 9.37 percent, 9.06 percent, 8.71 percent, 7.80 percent and 7.65 percent respectively.

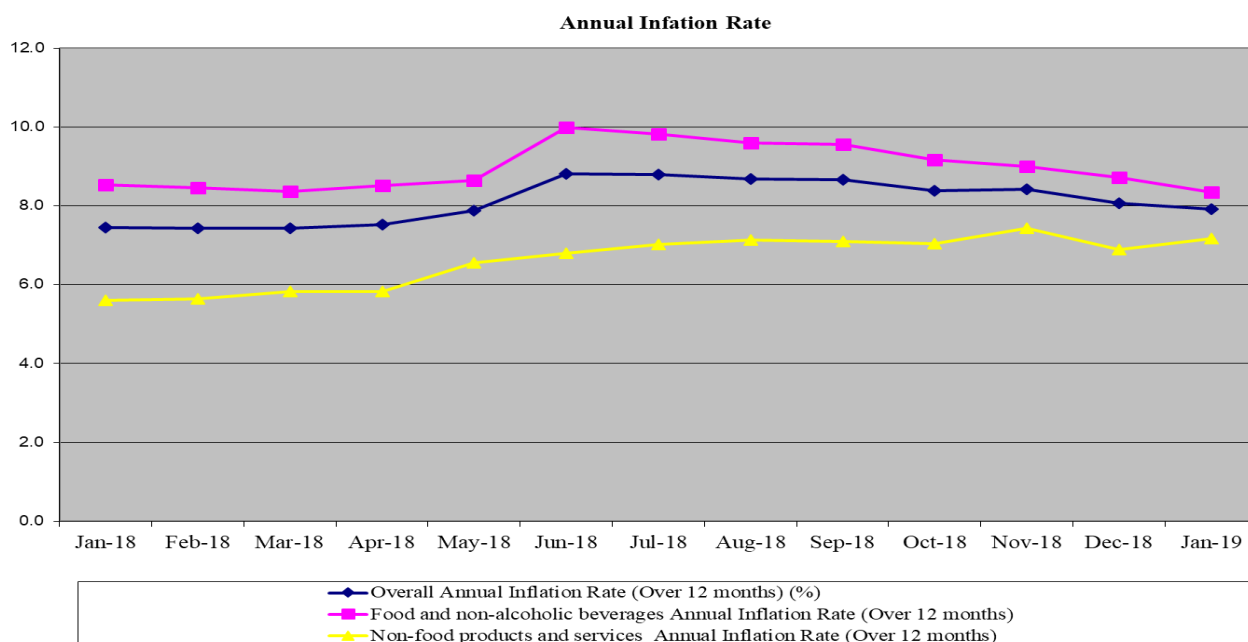
During the months of December 2018 to January 2019, ‘Oils and Fats’, ‘Meat and meat products’, ‘Bread and cereals’ and ‘Milk, Cheese and Eggs’ shows the highest increase in percentage with 0.68 percent, 0.46 percent, 0.40 percent and 0.37 percent respectively.

Using the 12 months-moving-average measure, inflation rate was 6.49 percent in January 2019 compared to 6.52 percent recorded in December 2018.

**Overall Annual Inflation Rate (over 12 months - Comparison with the same month for the previous year)**

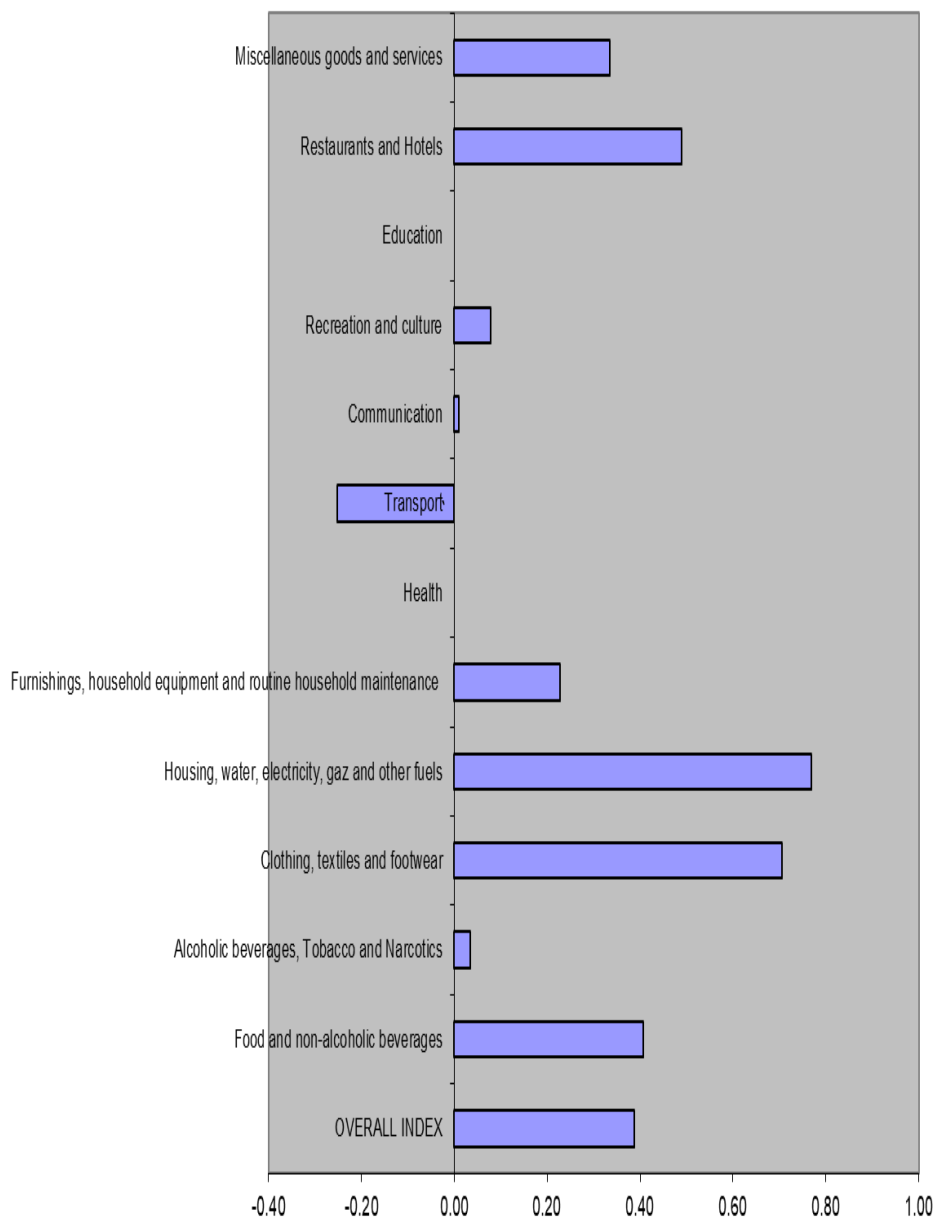
| Year | Jan | Feb | March | April | May | Jun | July | Aug | Sept | Oct | Nov | Dec |
|------|-----|-----|-------|-------|-----|-----|------|-----|------|-----|-----|-----|
| 2016 | 6.7 | 6.9 | 7.1   | 7.1   | 7.0 | 7.1 | 7.2  | 7.5 | 7.4  | 7.4 | 7.5 | 7.9 |
| 2017 | 8.8 | 8.8 | 8.7   | 8.7   | 8.4 | 8.4 | 8.1  | 7.9 | 7.6  | 7.4 | 6.9 | 6.9 |
| 2018 | 6.4 | 6.4 | 6.5   | 6.6   | 6.5 | 6.9 | 6.6  | 6.7 | 6.6  | 6.6 | 6.6 | 6.4 |
| 2019 | 6.5 |     |       |       |     |     |      |     |      |     |     |     |

**Figure 1: Annual changes – Comparison with the same month of the previous year (January 2018 – January 2019)**



**Figure 2: Monthly changes - Comparison with the previous month: December 2018 to January 2019**

**Price Changes in % over 1 month**



**CONTACTS**

The Gambia Bureau of Statistics (GBOS)  
 Kanifing Institutional Layout  
 P.O.Box 3504 Serekunda  
 Tel. (220) 4394529  
 Fax. (220) 437 7848  
 Web site: [www.gbos.gov.gm](http://www.gbos.gov.gm)  
 Publication Director: Mr. Nyakasi Sanyang, Statistician- General  
 Publication Editor: Mr Ousman Dibba, Director Economics Division GBOS  
 email: [odibba@gbos.gov.gm](mailto:odibba@gbos.gov.gm)  
 Statistician in charge of CPI: Fatou Darboe  
 email: [fdarboe@gbos.gov.gm](mailto:fdarboe@gbos.gov.gm)