



GBoS 

THE GAMBIA BUREAU OF STATISTICS

TRANSPORT STATISTICS

SUMMARY REPORT

(2020)

BY

THE TOURISM, TRANSPORT AND COMMUNICATION STATISTICS UNIT

June, 2021

Table of Contents

Foreword	iv
1.0: AIR TRANSPORTS STATISTICS	1
1.1: Air Traffic	1
1.2: Passenger Type	2
1.3: Freight on Transit, Loaded and Unloaded	3
1.4: Mail on Transit, Loaded and Unloaded	4
2.0: SEA TRANSPORT STATISTICS	5
2.1: Goods Handled from the Maritime Vessels	5
2.2: Passengers crossing at various ferry crossing stations in the Country	6
3.0: ROAD TRANSPORT STATISTICS	11
3.1: Accidents reported by number and type of Injuries	11
3.2: Number of Accident cases reported and persons killed	12
3.3: Length of Roads	12
APPENDIX	14

List of Table

Table 1: Length of Roads in kilometers, 2016-2020.....	12
--	----

List of Figures

Figure 1: Landings and Take-Offs at Banjul International Airport, 2016-2020	1
Figure 2: Number of Passengers by Type at Banjul International Airport, 2016 - 2020	2
Figure 3: Freight (tonnes) at Banjul International Airport, 2016 - 2020.....	3
Figure 4: Mails (tonnes) at Banjul International Airport, 2016 – 2020	4
Figure 5: Goods Loaded and Unloaded at the Seaport, 2016 – 2020.....	5
Figure 6: Number of Passengers at various crossing stations 2016-2020.....	6
Figure 7: Number of Accident Cases Recorded by Type of Accident, 2016 - 2020.....	11
Figure 8: Accidents Reported and Persons Killed, 2016-2020	12

List of Acronyms and Abbreviations

GCAA	Gambia Civil Aviation Authority
GIA	Gambia International Airlines
EU	European Union
GPA	Gambia Ports Authority
GPF	Gambia Police Force
NRA	National Roads Authority
UNOPS	United Nations Office for Project Services

Foreword

This report presents the Transport Statistics of The Gambia for the period 2016-2020. It could serve as a catalyst to enhancing the transport sector of the country. The tourism, transport and communication statistics unit under the Directorate of Economic Statistics of the Gambia Bureau of Statistics (GBoS) receives quarterly data extracted from the Gambia Civil Aviation Authority (GCAA), Gambia International Airlines (GIA), Gambia Ports Authority (GPA), the Gambia Police Force (GPF) and the National Roads Authority (NRA).

The data on air traffic movements is from the GCAA and GIA, and the data on sea transport is from GPA, while data on road accidents and number of registered vehicles data is from GPF and the data on the length of roads is from NRA.

The latest annual reports can be accessed on the Gambia Bureau of Statistics' website (<https://www.gbosdata.org/>). For users who have specific data needs, the tourism, transport and communication statistics Unit could offer the necessary assistance.

The Gambia Bureau of Statistics wishes to express its profound gratitude to the Statistics Units of GCAA, GIA, GPA, GPF and NRA for making available the necessary data for the compilation of the transport statistics. We hope that users will find this report useful.

Nyakassi M.B. Sanyang,

Statistician General

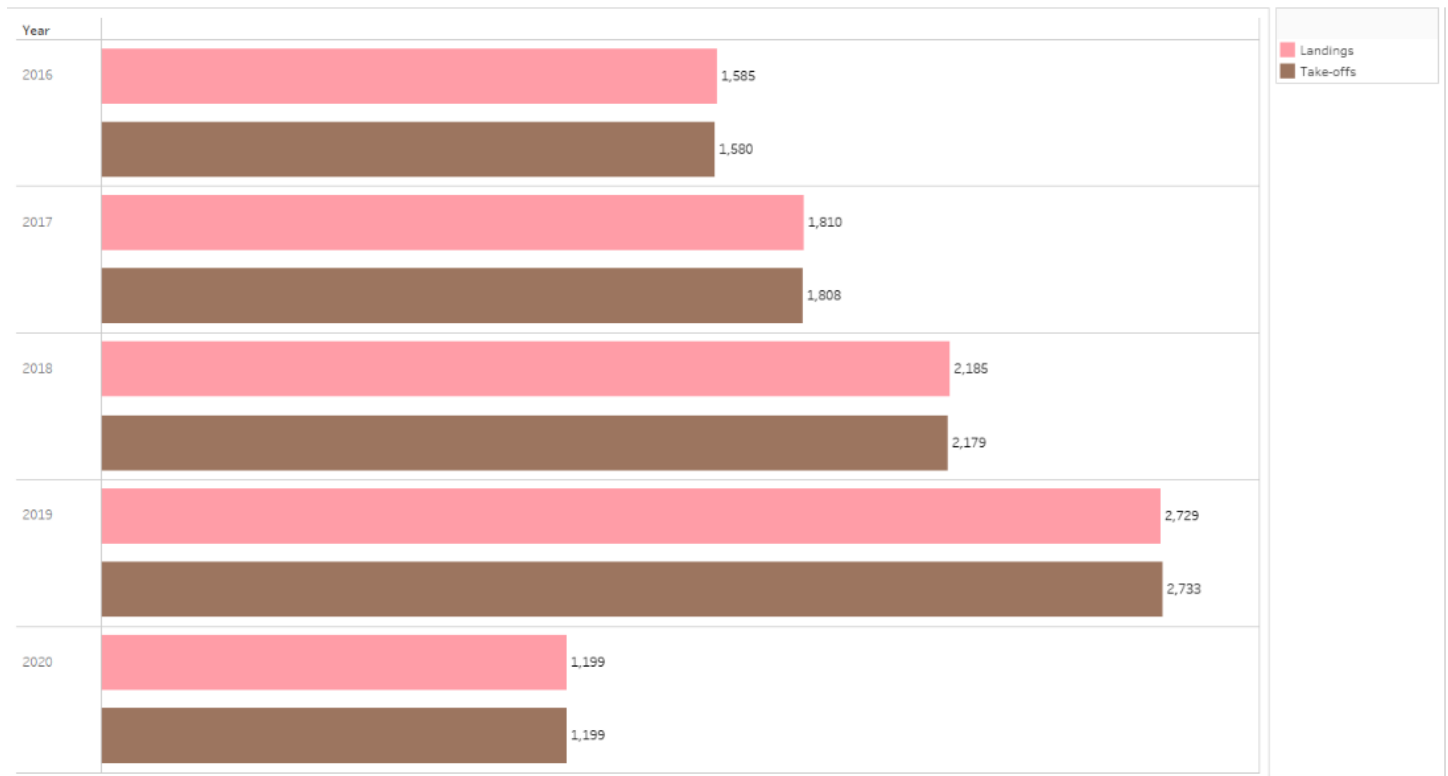
1.0: AIR TRANSPORTS STATISTICS

Air transport statistics is an important indicator to both the public and private sector. It shows how well nations are globalized and connected and promotes the efficient and timely movement of people and goods, thus leading to integration and economic growth. The air transport statistics in The Gambia comprises of different air transport movements, ranging from the movement of air crafts, passengers, freights and mails at the Banjul international Airport.

1.1 : Air Traffic

Figure 1 below shows the number of air traffic movements at the Banjul International Airport for the period 2016-2020. The number of landings and takeoffs each recorded 1,199 in 2020, which was a huge decline from the 2019 landing and takeoff of 2,729 and 2,733 respectively. This decline is attributed to the effect of the COVID-19 pandemic that caused global travel restrictions around the world.

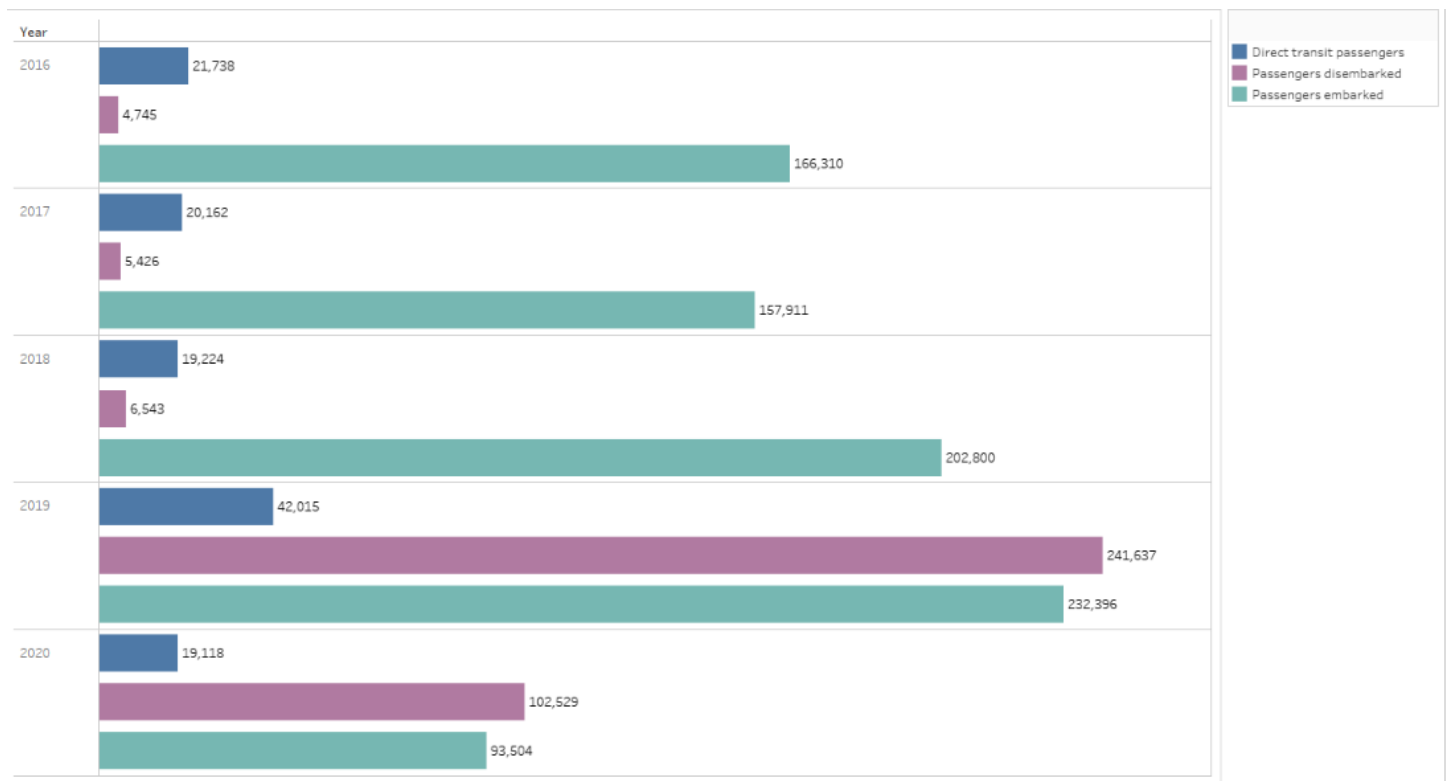
Figure 1: Landings and Take-Offs at Banjul International Airport, 2016-2020



1.2: Passenger Type

Figure 2 below shows the number of passengers that either embarked or disembarked or were in transit at the Banjul International Airport for the period under review. However, the figure below shows that all the three categories of passengers decreased in 2020 compared to 2019, with the number of disembarked passengers and embarked passengers reducing drastically by about 58 per cent and 60 per cent respectively. And the number of transit passengers decreased from 42, 015 passengers in 2019 to 19,118 passengers in 2020 which represents a drop of about 54 per cent.

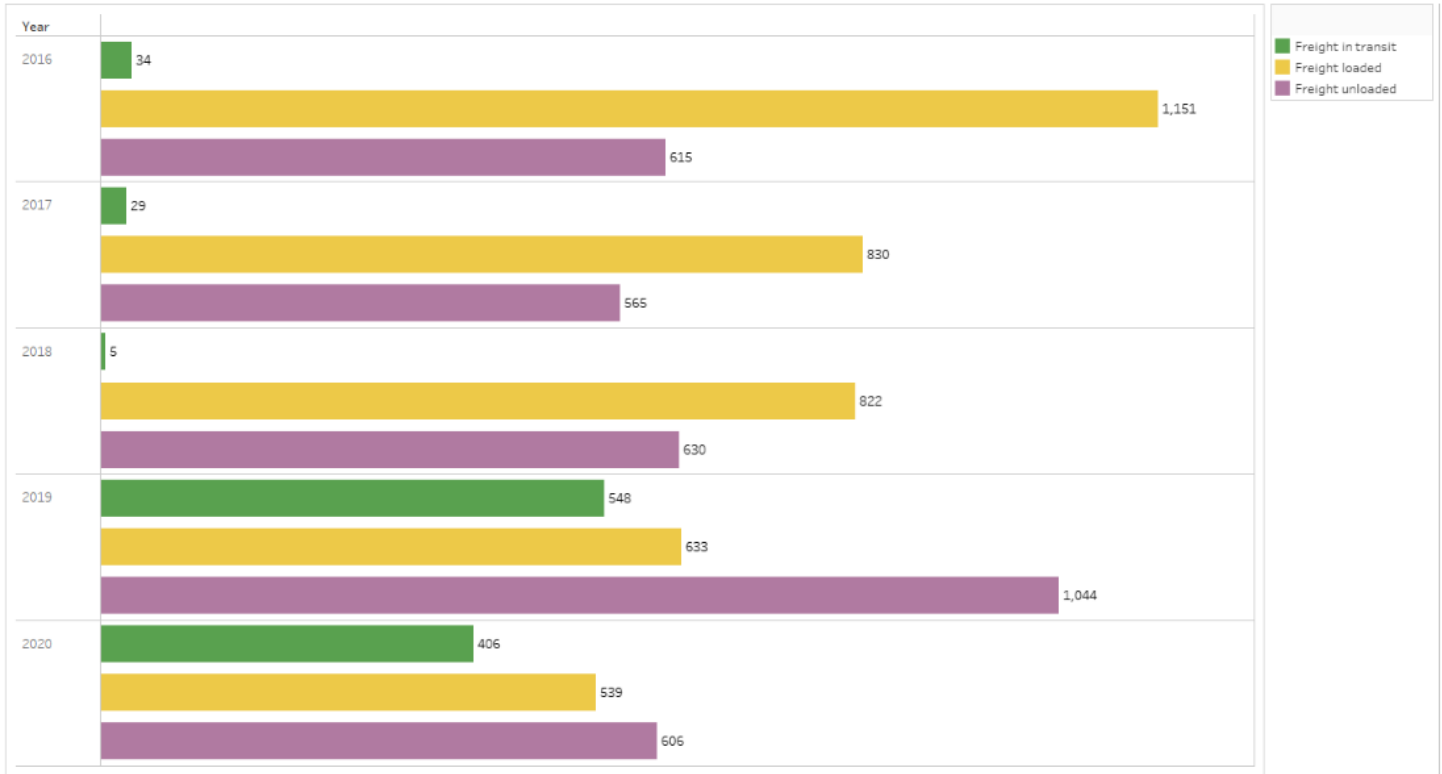
Figure 2: Number of Passengers by Type at Banjul International Airport, 2016 – 2020



1:3 Freight on Transit, Loaded and Unloaded

Looking at the figure below, the weight of freight unloaded decreased from 1,044 tonnes in 2019 to 606 tonnes in 2020 a decline of about 42 per cent. Similarly, freight on transit decreased by 26 per cent from 548 in 2019 to 406 tonnes in 2020, and freight loaded declined by 15 per cent from 2019 to 2020.

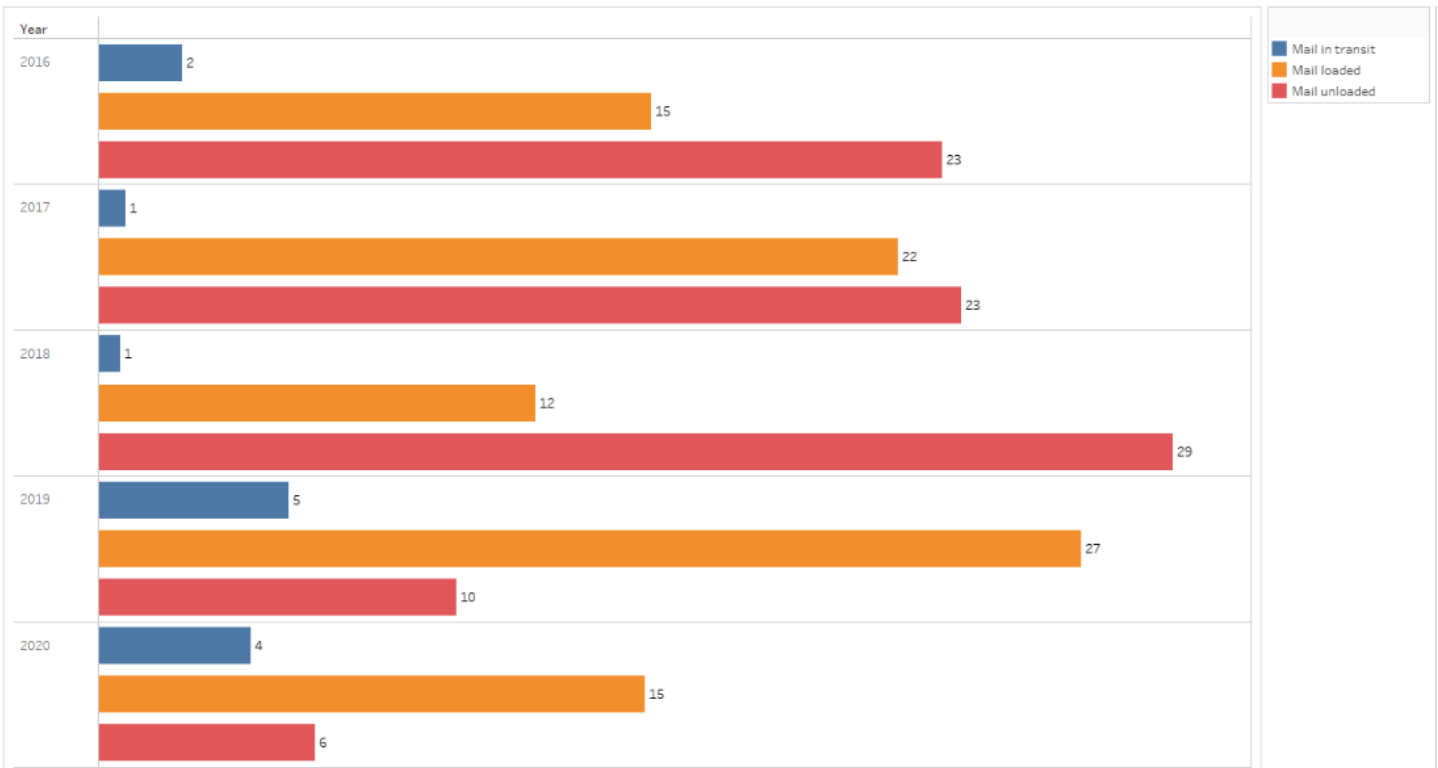
Figure 3: Freight (tonnes) at Banjul International Airport, 2016 – 2020



1.4: Mail on Transit, Loaded and Unloaded

Given the decline in number of travels in 2020 due to the global travel restrictions as a result of the Covid-19 pandemic, the weight of mails unloaded and loaded at the Banjul International Airport decreased from 20 tonnes and 27 tonnes in 2019 to 6 tonnes and 15 tonnes in 2020 respectively which represents a drop of about 40 per cent and 44 per cent respectively. While the number of mails on transit decreased by 20 per cent from 5 tonnes in 2019 to 4 tonnes in 2020.

Figure 4: Mails (tonnes) at Banjul International Airport, 2016 – 2020



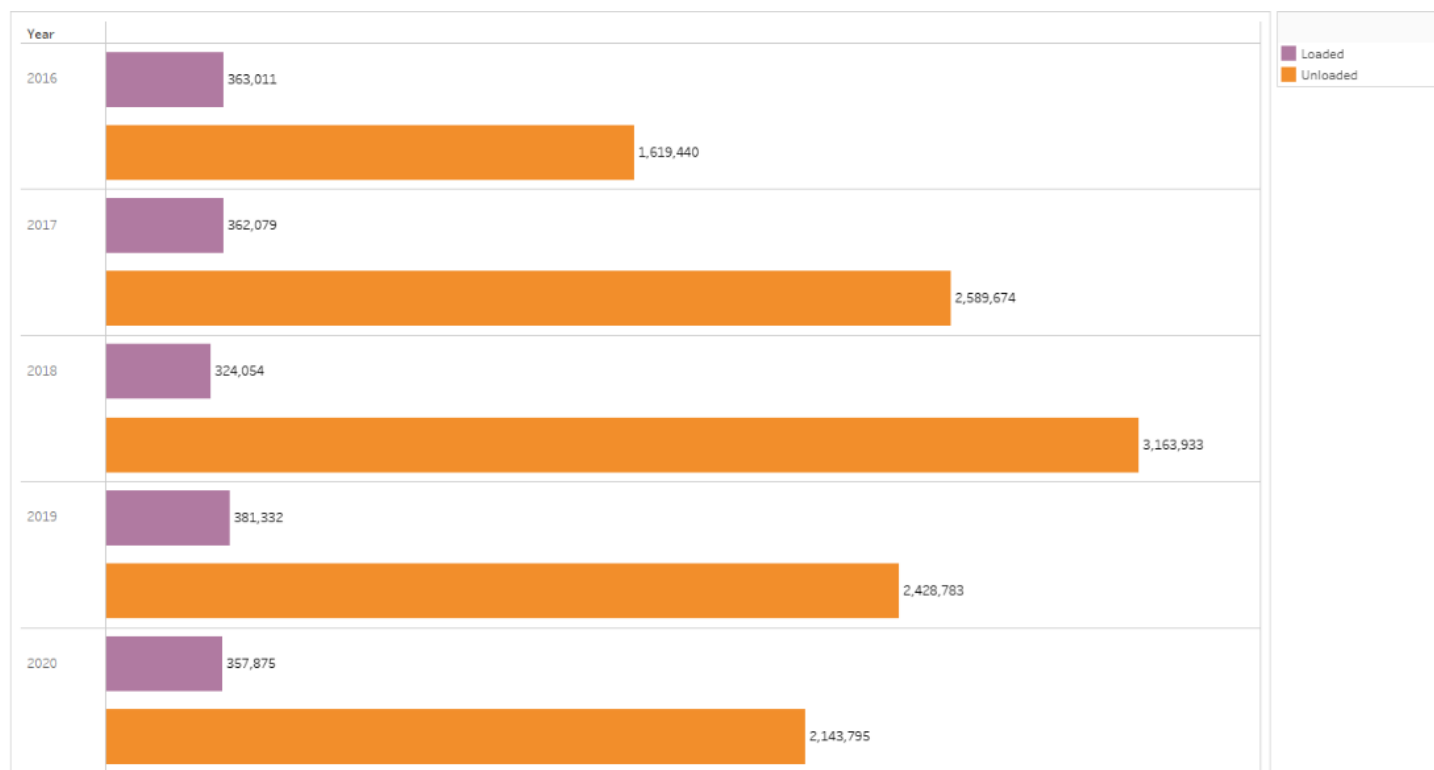
2.0: SEA TRANSPORT STATISTICS

One important indicator for openness of an economy, confidence in its markets and the size of an economy for international traders and business personnel alike is the statistics on transportation of goods in and out of a country. The Gambia as a small open economy is known to be largely dependent on the international economy, sourcing almost all its major goods from other countries. The sea transport statistics mainly entails the number of goods handled, loaded and unloaded at the sea port in Banjul from maritime vessels.

2.1: Goods Handled from the Maritime Vessels

The weight of goods unloaded at the Banjul seaport decline from 2.4 million tonnes in 2019 to 2.1 million tonnes in 2020. Similarly, the tonnes of goods loaded decreased from 381,332 tonnes in 2019 to 357,875 in 2020.

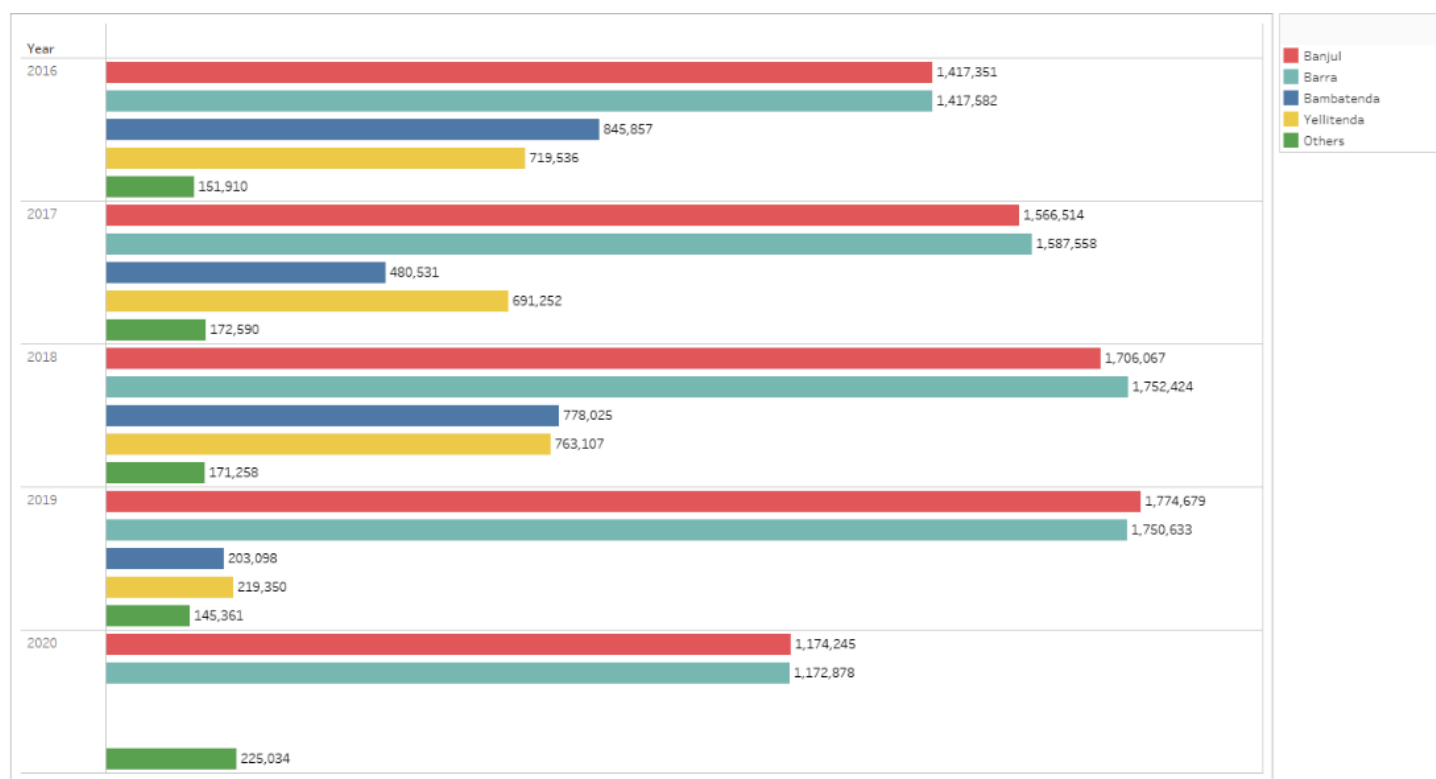
Figure 5: Goods Loaded and Unloaded (tonnes) at the Seaport, 2016 – 2020



2.2: Passengers crossing at various ferry crossing stations in the Country

The Banjul and Barra crossing stations are the most engaging ferry crossing stations in The Gambia in terms of number of passengers. However, in 2020 the two crossing stations also registered a decline in the number of passengers to about 1.1 million each compared to around 1.7 million passengers in 2019. Yellitenda and Bambatenda being replaced by the Senegambia Bridge did not register any passenger in 2020 compared to 2019 when it had 219,350 and 203,098 passengers respectively. The other ferry stations include Kaur, Janjanbureh, Barajali, Bansang, Basse, Fatoto and Baati which in total registered 225,034 passengers in 2020 compared to 145,361 passengers in 2019.

Figure 6: Number of Passengers at various crossing stations 2016-2020



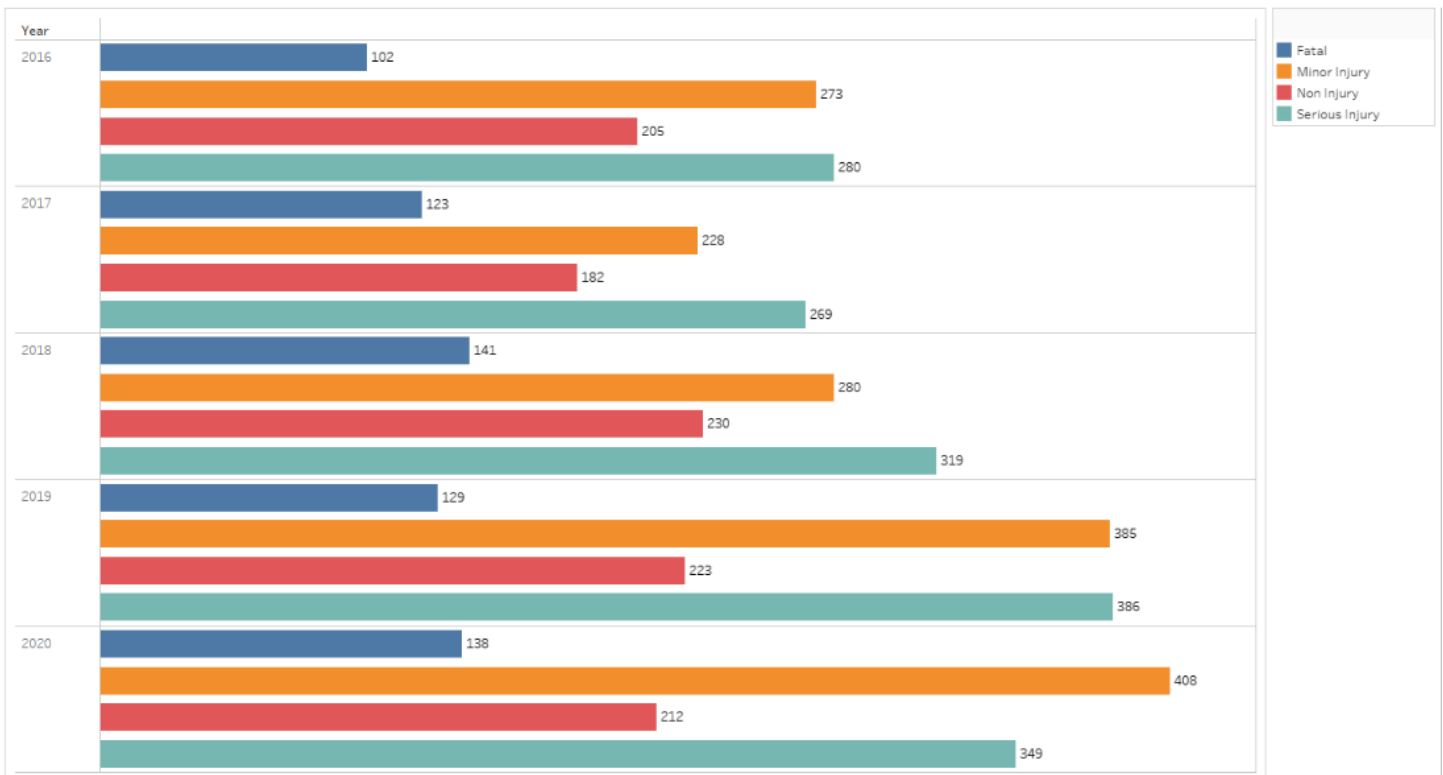
3.0: ROAD TRANSPORT STATISTICS

Road Transport Statistics provides very important statistics on number and types of accident cases reported to the traffic authorities including fatalities and injuries. It also provides information on length of primary and secondary roads as well as paved and unpaved roads available in the country and other types of roads such as tertiary. These statistics will go a long way to inform policy makers for evidence based decision making especially in terms of road infrastructure, traffic facilities, rules and regulations and on road traffic repairs and maintenance works.

3.1: Accidents reported by number and type of Injuries

The figure below shows the types of accidents and their occurrence over the years. Fatal accidents and minor injury accidents have increased from 129 cases and 386 cases in 2019 to 138 cases and 408 cases in 2020 respectively. Conversely, the number of serious injury and non-injury accidents has both decreased by 10 per cent and 5 per cent respectively from 2019 to 2020. Among the categories of accidents, minor injury accidents recorded the highest number of cases in 2020.

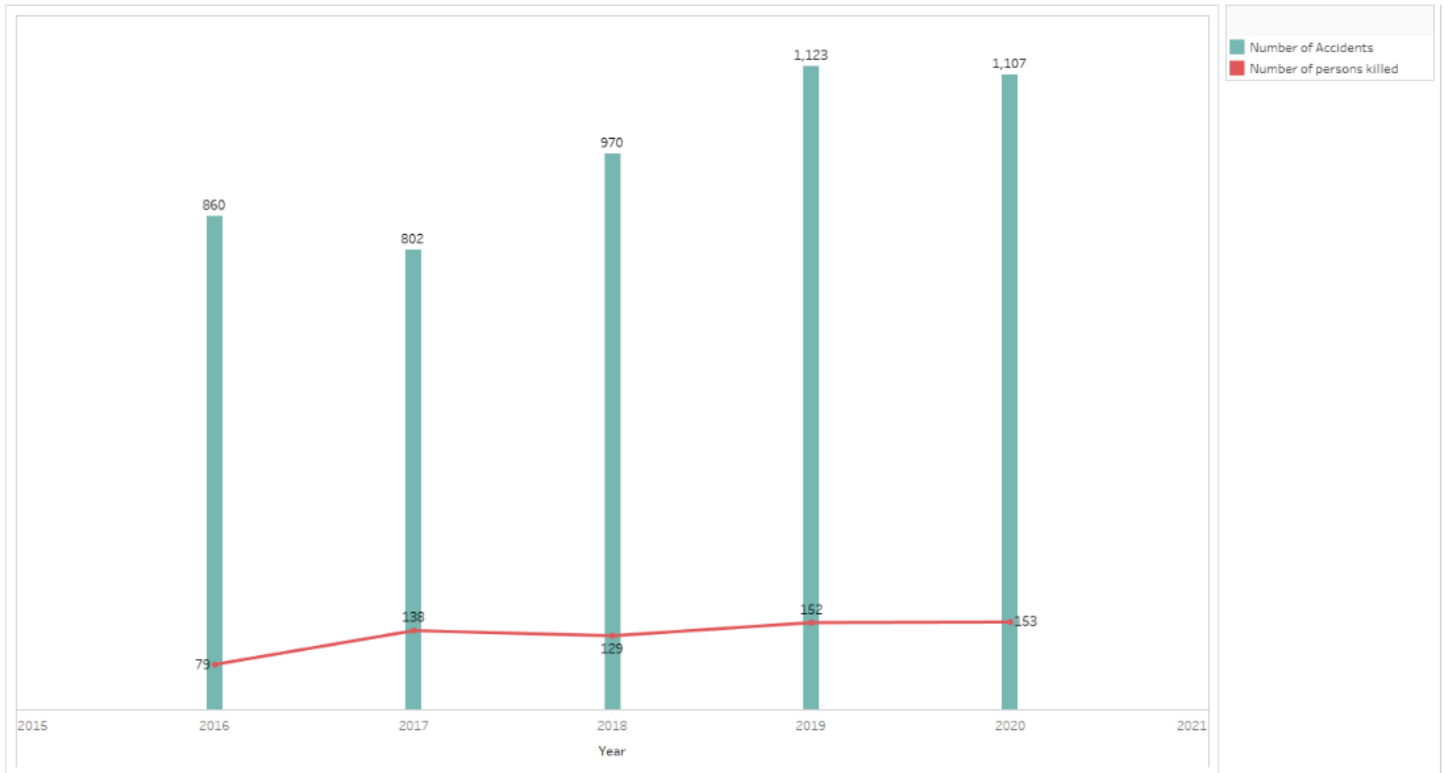
Figure 7: Number of Accident Cases Recorded by Type of Accident, 2016 – 2020



3.2: Number of Accident cases reported and persons killed

The number of accident cases recorded has generally been on the rise in recent years. However, the number of accidents recorded decreased from 1,123 cases in 2019 to 1,107 cases in 2020 a decline of about 1 per cent. While the number of accident related death recorded was about 153 cases in 2020 compared to 152 cases in 2019.

Figure 8: Accidents Reported and Persons Killed, 2016-2020



3.3: Length of Roads

The length and type of road networks in a country define the type of road infrastructure especially in terms of access. Thus, the total length of roads and types is presented in Table 1 below.

The total length of roads as of 2020 was about 3,944 km compared to 1,884 km in 2019. The length of primary roads has increased from 817 km in 2019 to 847.15 km in 2020, and that of secondary roads increased from 643 km in 2019 to 668 km in 2020. Other roads add up to 2430 km in 2020 compared to 422 km in 2019. The increased in the other roads is due to the increase in the agricultural feeder roads, European Union (EU) and United Nations Office for Project Services (UNOPS) feeder roads and other feeder roads.

Table 1: Length of Roads in kilometers, 2016-2020

Road Type ¹	2016	2017	2018	2019	2020
Total Primary/main roads	817.8	817.8	817.8	817.8	847.15
Paved	648.47	668.47	688.47	749	799.55
Unpaved	169.33	149.33	129.33	68.8	47.6
Total Secondary roads	629.29	629.29	629.29	643.99	667.65
Paved	214.29	214.29	214.29	228.99	436.15
Unpaved	415	415	415	415	231.5
Other roads / Tertiary	303.40	306.39	321.40	422.10	2429.30
Paved	23.7	26.7	31.7	45	64.3
Unpaved	279.699	279.69	289.699	377.099	2365
Total length of roads	1750.48	1753.48	1768.48	1883.88	3944.1
Of which: paved roads	886.46	909.46	934.46	1022.99	1300
Length of paved roads as % of total length of roads	50.64	51.87	52.84	54.30	32.96

¹ Primary road networks refers to the main North and South bank trunk roads originating from Banjul and Barra respectively
Secondary roads are the urban and semi-urban linking roads example Kairaba Avenue.

APPENDIX

Table 1: Air traffic at Banjul International Airport by year, 2016 -2020

Air Traffic	2016	2017	2018	2019	2020
Landings	1,585	1,810	2,185	2,729	1,199
Take-off	1,580	1,808	2,179	2,733	1,199
Aircraft Movements	3,165	3,618	4,364	5,462	2,398
Passengers disembarked	4,745	5,426	6,543	241,637	102,529
Passengers embarked	166,310	157,911	202,800	232,396	93,504
Total Passengers Handled	171,055	163,337	209,343	474,033	196,033
Direct transit passengers	21,738	20,162	19,224	42,015	19,118
Freight unloaded (Kgs)	615,132	565,440	629,612	1,043,740	606,426
Freight loaded (Kgs)	1,150,995	830,135	821,853	632,616	539,475
Total Freight Handled	1,766,127	1,395,575	1,451,465	1,676,356	1,145,901
Freight in transit	34,198	29,010	5,242	548,391	406,149
Mail unloaded (Kgs)	22,839	23,367	29,101	9,713	5,869
Mail loaded (Kgs)	14,978	21,653	11,833	26,608	14,815
Total Mail Handled (Kgs)	37,817	45,020	40,934	36,321	20,684
Mail in transit (Kgs)	2,295	747	609	5,167	4,149

Source: GCCA and GIA

Table 2: Goods in Metric tons loaded, unloaded and handled at sea port of The Gambia from maritime vessels, 2016—2020

year	Loaded	Unloaded	Total Goods Handled
2016	363011	1,619,440	1,982,451
2017	362079	2,589,674	2,706,522
2018	324054	3,163,933	3,487,987
2019	381,332	2,428,783	2,810,115
2020	357,875	2,143,795	2,501,670

Source: GPA

Table 3: Number of Passengers crossing at various stations 2016-2020

STATIONS	2016	2017	2018	2019	2020
Banjul	1,417,351	1,566,514	1,706,067	1,774,679	1,174,245
Barra	1,417,582	1,587,558	1,752,424	1,750,633	1,172,878
Yellitenda	719,536	691,252	763,107	219,350	-
Bambatenda	845,857	480,531	778,025	203,098	-
Others	151,910	172,590	171,258	145,361	225,034
Total	4,552,236	4,498,445	5,170,881	4,093,122	2,572,157

The other ferry stations include Kaur, Janjanbureh, Barajali, Bansang, Basse, Fatoto and Baati.

Table 4: Accident Cases and Number of Persons killed or injured, 2016-2020

Year	No of accident cases recorded	(a) Fatal accidents	Number of persons killed or injured										Total number of persons killed annually	
			Person involved (sex)		(b) Serious injury accidents	Person involved (sex)		(c) Minor injury accidents	Person involved (sex)		(d) Non-injury accidents	Person involved (sex)		
			Male	Female		Male	Female		Male	Female		Male		Female
2016	860	102	32	47	280	334	184	273	244	161	205	183	39	79
2017	802	123	102	36	269	399	190	228	234	122	182	190	49	138
2018	970	141	93	36	319	308	152	280	298	173	230	234	42	129
2019	1,123	129	113	39	386	430	189	385	370	204	223	312	28	152
2020	1,107	138	111	42	349	402	133	408	419	176	212	287	36	153
Total	9,343	1,108	896	380	2,900	3,214	1,561	3,067	2,810	1,551	2,268	1,326	236	1,276

Source: GPF

Table 5: Length of Roads and Type of Road Network (km), 2016-2020

Road type	2016	2017	2018	2019	2020
Total Primary/main roads	817.8	817.8	817.8	817.8	847.15
Paved	648.47	668.47	688.47	749	799.55
Unpaved	169.33	149.33	129.33	68.8	47.6
Total Secondary roads	629.29	629.29	629.29	643.99	667.65
Paved	214.29	214.29	214.29	228.99	436.15
Unpaved	415	415	415	415	231.5
Other roads / Tertiary	303.40	306.39	321.40	422.10	2429.30
Paved	23.7	26.7	31.7	45	64.3
Unpaved	279.699	279.69	289.699	377.099	2365
Total length of roads	1750.48	1753.48	1768.48	1883.88	3944.1
Of which: paved roads	886.46	909.46	934.46	1022.99	1300
Length of paved roads as % of total length of roads	50.64	51.87	52.84	54.30	32.96

Source: NRA