



GBOS 

THE GAMBIA BUREAU OF STATISTICS

TRANSPORT STATISTICS

SUMMARY REPORT

(2021)

BY

THE TOURISM, TRANSPORT AND COMMUNICATION STATISTICS UNIT

June, 2022

Table of Contents

Foreword	iv
1.0: AIR TRANSPORTS STATISTICS	1
1.1: Air Traffic	1
1.2: Passenger Type	2
1.3: Freight on Transit, Loaded and Unloaded	3
1.4: Mail on Transit, Loaded and Unloaded	3
2.0: SEA TRANSPORT STATISTICS	4
2.1: Goods Handled from the Maritime Vessels	5
2.2: Passengers crossing at various ferry crossing stations in the Country	5
3.0: ROAD TRANSPORT STATISTICS	11
3.1: Accidents reported by number and type of Injuries	11
3.2: Number of Accident cases reported and persons killed	11
3.3: Length of Roads	12
APPENDIX	14

List of Table

Table 1: Length of Roads in kilometers, 2017-2021.....	12
--	----

List of Figures

Figure 1: Landings and Take-Offs at Banjul International Airport, 2017-2021	1
Figure 2: Number of Passengers by Type at Banjul International Airport, 2017 – 2021	2
Figure 3: Freight (tonnes) at Banjul International Airport, 2017 – 2021	3
Figure 4: Mails (tonnes) at Banjul International Airport, 2017 – 2021	4
Figure 5: Goods Loaded and Unloaded (tonnes) at the Seaport, 2017 – 2021.....	5
Figure 6: Number of Passengers at various crossing stations 2017-2021	6
Figure 7: Number of Accident Cases Recorded by Type of Accident, 2017 – 2021	11
Figure 8: Accidents Reported and Persons Killed, 2017-2021	12

List of Acronyms and Abbreviations

GCAA	Gambia Civil Aviation Authority
GIA	Gambia International Airlines
EU	European Union
GPA	Gambia Ports Authority
GPF	Gambia Police Force
NRA	National Roads Authority
UNOPS	United Nations Office for Project Services

Foreword

This report presents the Transport Statistics of The Gambia for the period 2017-2021. It could serve as a catalyst to enhancing the transport sector of the country. The tourism, transport and communication statistics unit under the Directorate of Economic Statistics of the Gambia Bureau of Statistics (GBoS) data from the Gambia Civil Aviation Authority (GCAA), Gambia International Airlines (GIA), Gambia Ports Authority (GPA), the Gambia Police Force (GPF) and the National Roads Authority (NRA).

The data on air traffic movements is from the GCAA and GIA, and the data on sea transport is from GPA, while data on road accidents and number of registered vehicles data is from GPF and the data on the length of roads is from NRA.

The latest annual reports can be accessed on the Gambia Bureau of Statistics' website (<https://www.gbosdata.org/>). For users who have specific data needs, the tourism, transport and communication statistics Unit could offer the necessary assistance.

The Gambia Bureau of Statistics wishes to express its profound gratitude to the Statistics Units of GCAA, GIA, GPA, GPF and NRA for making available the necessary data for the compilation of the transport statistics. The bureau of statistics also wishes to thank the staff of the Tourism, Transport and Communication statistics unit for their efforts and dedication in their work and in producing this report. We hope that users will find this report useful.

Nyakassi M.B. Sanyang,

Statistician General

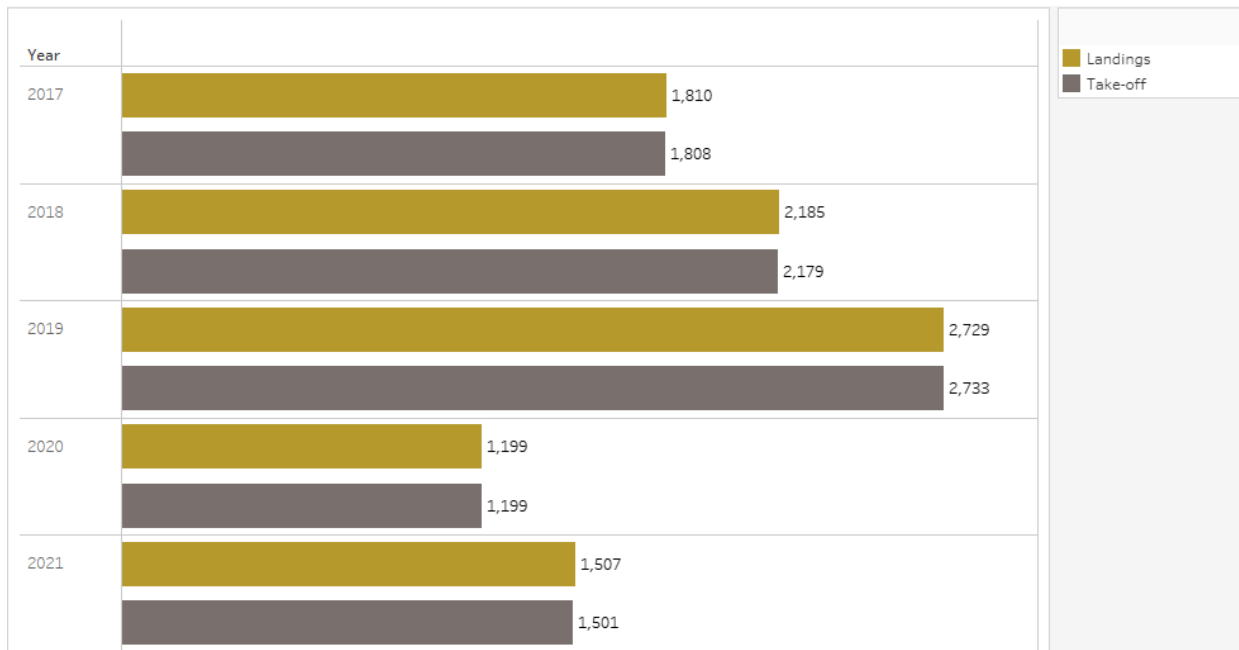
1.0: AIR TRANSPORTS STATISTICS

Air transport statistics is an important indicator to both the public and private sector. It shows how well nations are globalized and connected and promotes the efficient and timely movement of people and goods, thus leading to integration and economic growth. The air transport statistics in The Gambia comprises of different air transport movements, ranging from the movement of air crafts, passengers, freights and mails at the Banjul international Airport.

1.1 : Air Traffic

Figure 1 below shows the number of air traffic movements at the Banjul International Airport for the period 2017-2021. The number of landings and takeoffs both increased from 1,199 in 2020 to 1507 and 1501 respectively in 2021. This increase is as a result of a lift in the travelling ban and the lessening on some of the restrictions put in place due to the COVID-19 pandemic.

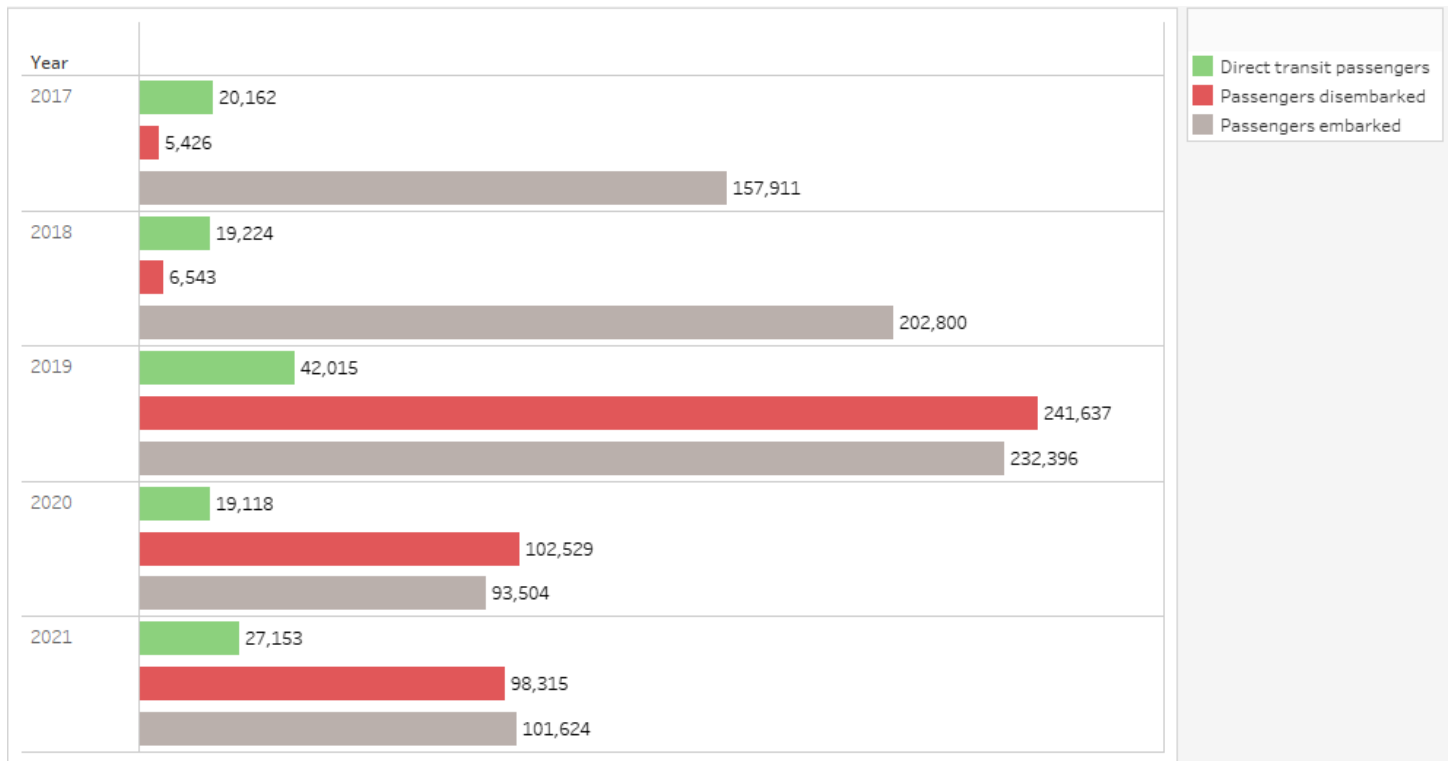
Figure 1: Landings and Take-Offs at Banjul International Airport, 2017-2021



1.2: Passenger Type

Figure 2 below shows the number of passengers that either embarked or disembarked or were in transit at the Banjul International Airport for the period under review. The figure shows that direct transit and embarked passengers increased from 19,118 and 93,504 passengers in 2020 to 27,153 and 101,624 passengers in 2021 respectively. While the number of disembarked passengers decreased by 4 percent from 102,529 passengers in 2020 to 98,315 in 2021.

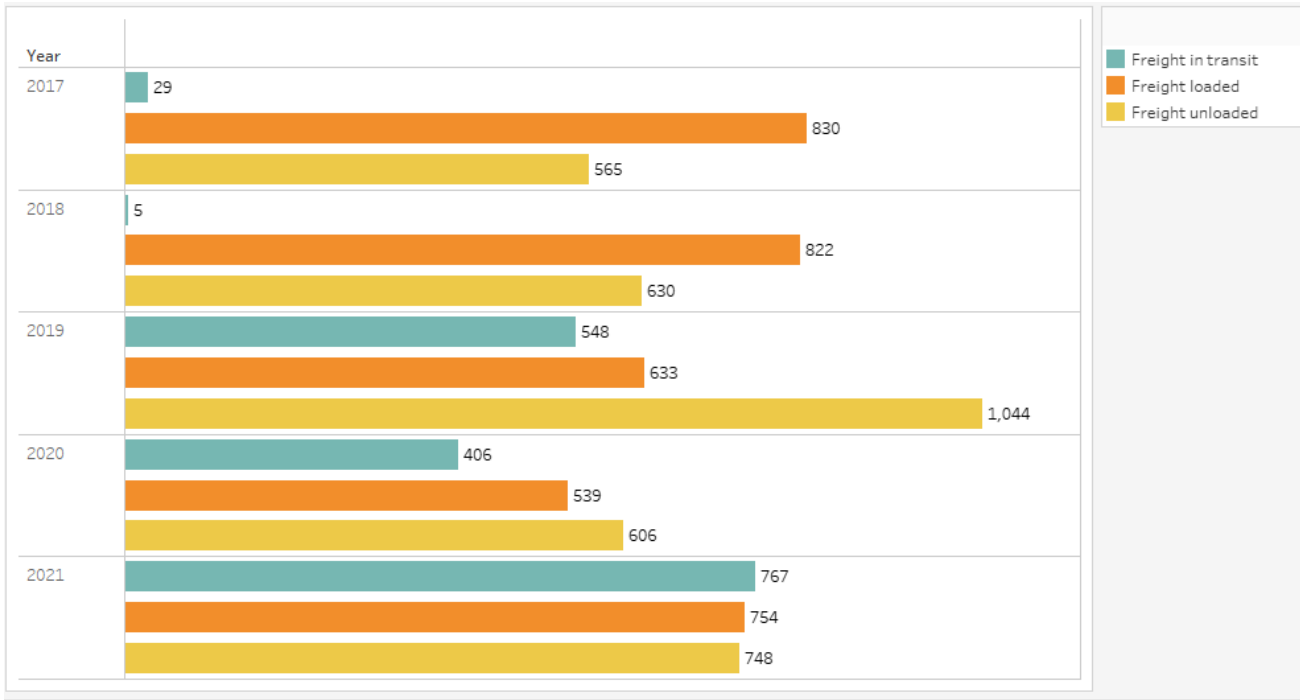
Figure 2: Number of Passengers by Type at Banjul International Airport, 2017 – 2021



1:3 Freight on Transit, Loaded and Unloaded

The tonnes of freight unloaded, loaded and on transit all increased in 2021 compared to 2020. Looking at the figure below, the weight of freight unloaded increased by 23.37 percent from 606 tonnes in 2020 to 748 tonnes in 2021. Similarly, freight on transit and freight loaded increased from 406 and 539 tonnes in 2020 to 767 and 754 tonnes in 2021 respectively.

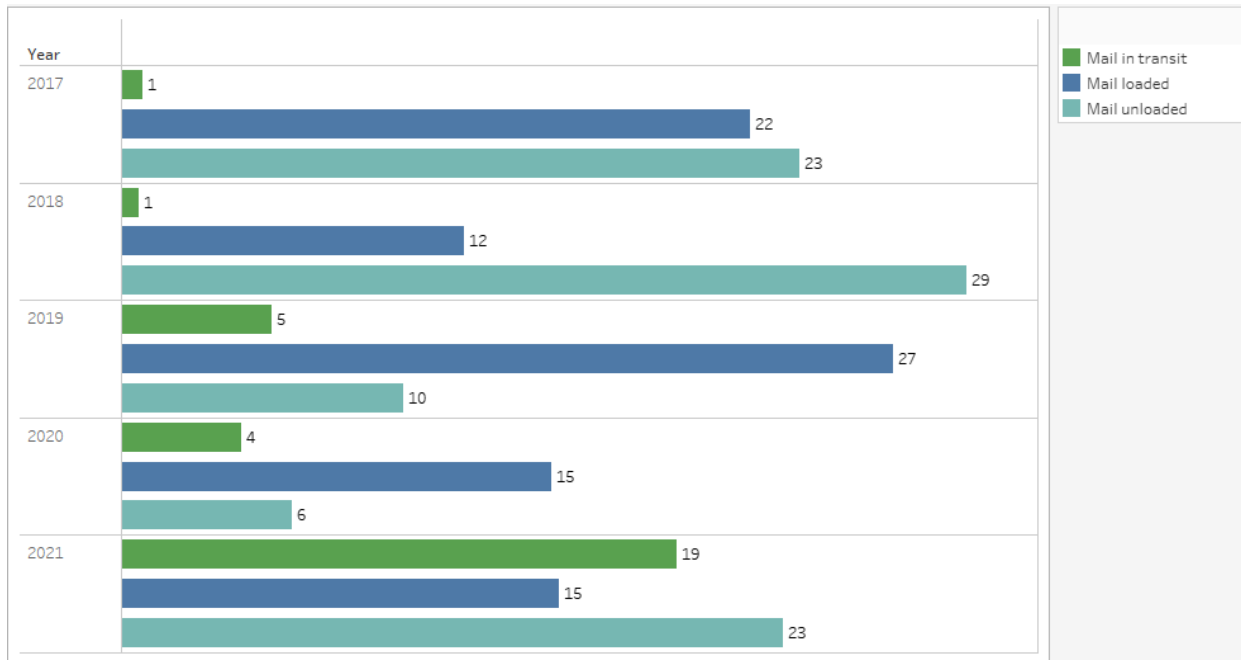
Figure 3: Freight (tonnes) at Banjul International Airport, 2017 – 2021



1.4: Mail on Transit, Loaded and Unloaded

The weight of mails unloaded and on transit at the Banjul International Airport increased from 6 tonnes and 4 tonnes in 2020 to 23 and 19 tonnes in 2021 respectively. While the number of mails loaded was the same (15 tonnes) for both periods under review 2020 and 2021.

Figure 4: Mails (tonnes) at Banjul International Airport, 2017 – 2021



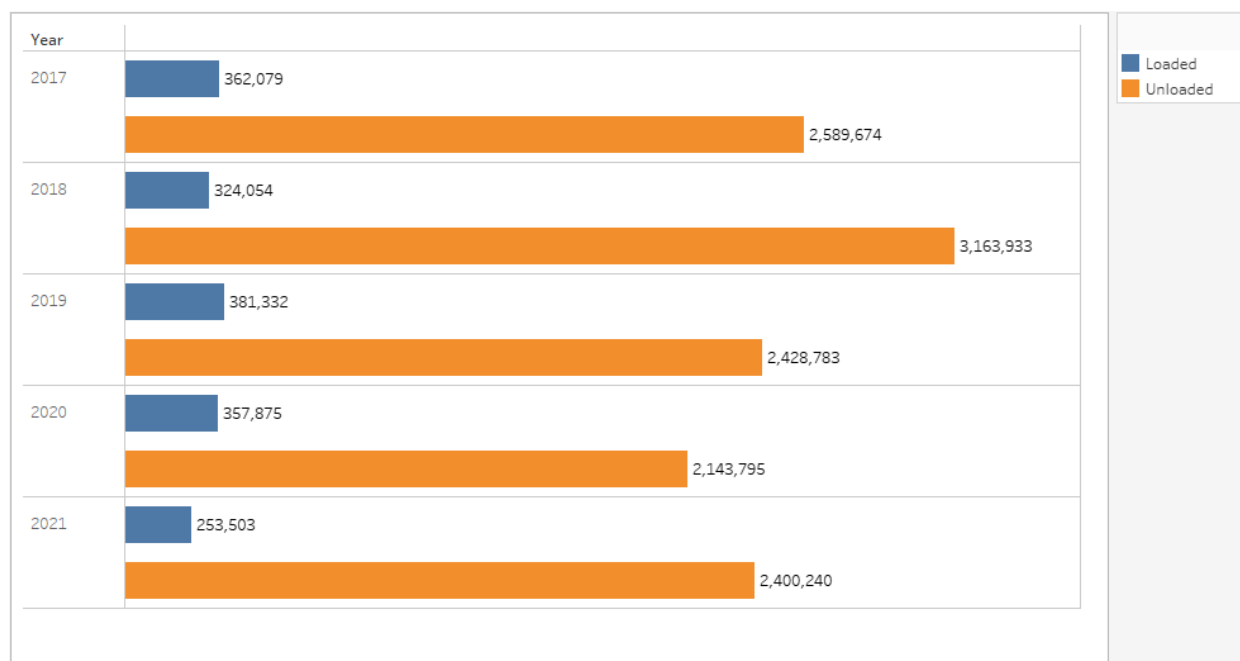
2.0: SEA TRANSPORT STATISTICS

One important indicator for openness of an economy, confidence in its markets and the size of an economy for international traders and business personnel alike is the statistics on transportation of goods in and out of a country. The Gambia as a small open economy is known to be largely dependent on the international economy, sourcing almost all its major goods from other countries. The sea transport statistics mainly entails the number of goods handled, loaded and unloaded at the sea port in Banjul from maritime vessels.

2.1: Goods Handled from the Maritime Vessels

The weight of goods unloaded at the Banjul seaport increased from 2.1 million tonnes in 2020 to 2.4 million tonnes in 2021 showing an increase of about 11 percent. However, the tonnes of goods loaded decreased from 357,875 tonnes in 2020 to 253,503 tonnes in 2021 representing a decrease of about 29 percent.

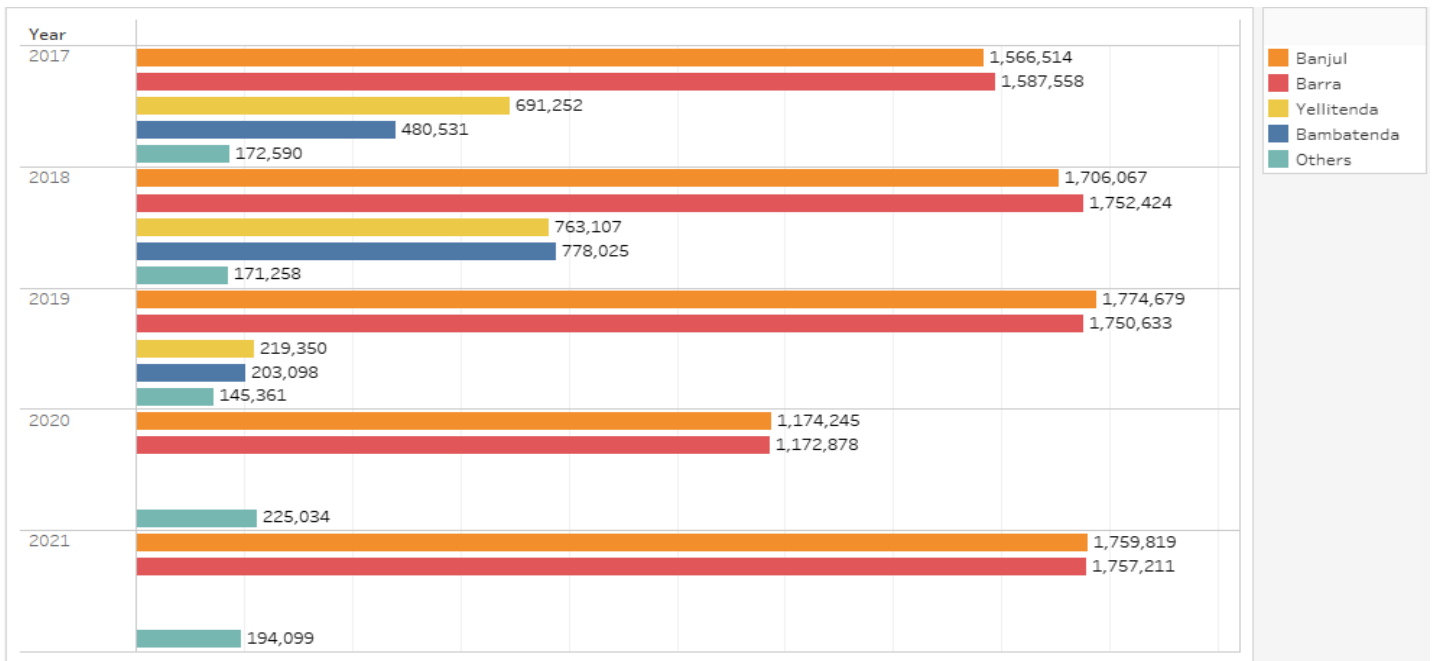
Figure 5: Goods Loaded and Unloaded (tonnes) at the Seaport, 2017 – 2021



2.2: Passengers crossing at various ferry crossing stations in the Country

The Banjul and Barra crossing stations are the most engaging ferry crossing stations in The Gambia in terms of number of passengers. The two main crossing points (Banjul and Barra) both recorded a huge increase of about 50 per cent in the number of passengers who crossed in 2021 compared to 2020. Yellitenda and Bambatenda being replaced by the Senegambia Bridge did not register any passenger crossing since 2020. The other ferry stations include Kaur, Janjanbureh, Barajali, Bansang, Basse, Fatoto and Baati all recorded a total decline of 225,034 passengers in 2020 compared to 194,099 passengers in 2021.

Figure 6: Number of Passengers at various crossing stations 2017-2021



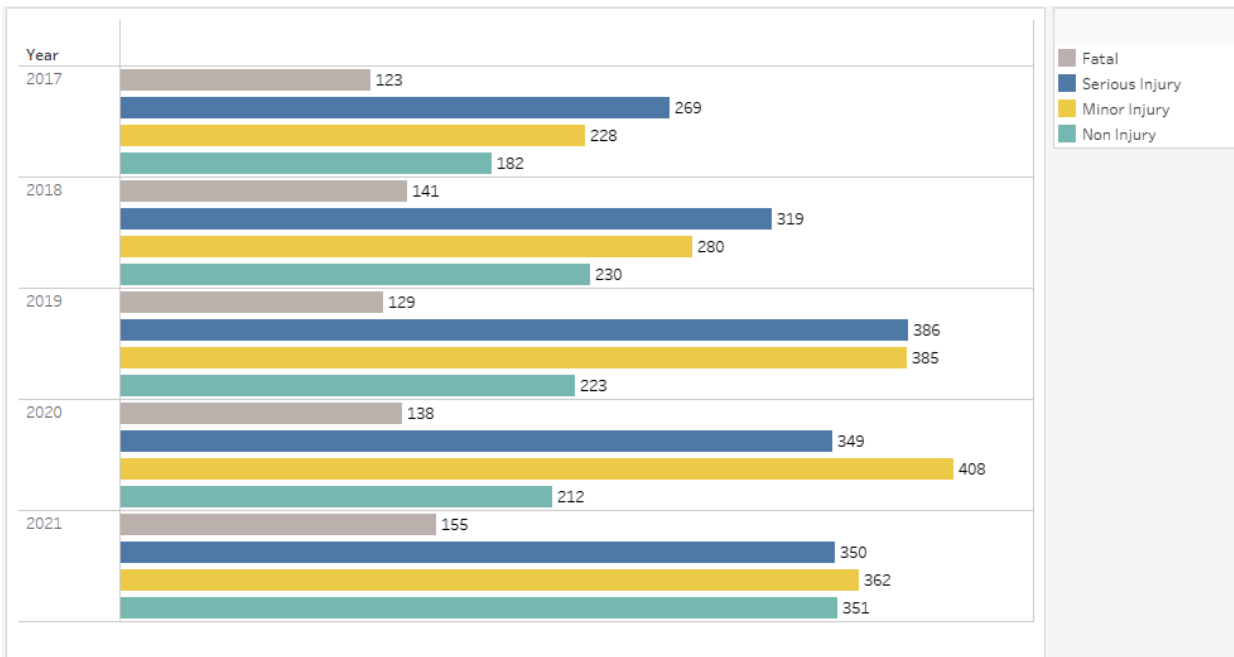
3.0: ROAD TRANSPORT STATISTICS

Road Transport Statistics provides very important statistics on number and types of accident cases reported to the traffic authorities including fatalities and injuries. It also provides information on length of primary and secondary roads as well as paved and unpaved roads available in the country and other types of roads such as tertiary. These statistics will go a long way to inform policy makers for evidence based decision making especially in terms of road infrastructure, traffic facilities, rules and regulations and on road traffic repairs and maintenance works.

3.1: Accidents reported by number and type of Injuries

The figure below shows the types of accidents and their occurrence over the years. Fatal accidents increased from 138 cases in 2020 to 155 cases in 2021 while minor injury accidents decreased from 408 cases in 2020 to 362 cases in 2021. The number of serious injury accidents increased by 1 case from 349 in 2020 to 350 in 2021 and non-injury accidents increased by 66 per cent from 2020 to 2021. Among the categories of accidents, minor injury accidents recorded the highest number of cases under both years of review.

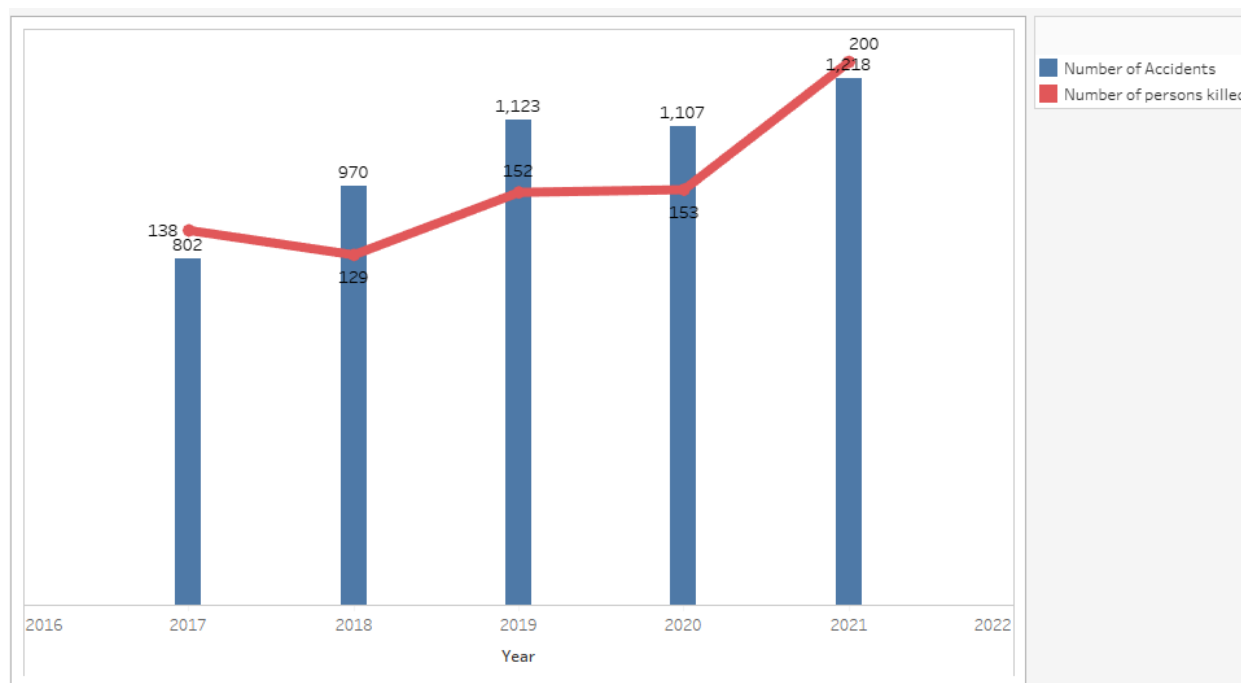
Figure 7: Number of Accident Cases Recorded by Type of Accident, 2017 – 2021



3.2: Number of Accident cases reported and persons killed

The number of accident cases recorded has generally been on the rise in recent years. From 2020 to 2021 a 10 per cent rise in number of accident cases was recorded as the number of cases increased from 1,107 cases to 1,218 cases in 2021. Similarly, the number of accident related death increased from 153 persons in 2020 to 200 persons in 2021.

Figure 8: Accidents Reported and Persons Killed, 2017-2021



3.3: Length of Roads

The length and type of road networks in a country define the type of road infrastructure especially in terms of access. Thus, the total length of roads and types is presented in Table 1 below.

The total length of roads as of 2020 was about 3,944 km which has increased to 4498.896 km in 2021. The length of primary roads has relatively stayed the same in both periods under review, while that of secondary roads decreased from 667.65 km in 2020 to 359 km in 2021. Urban and Other (tertiary) roads add up to 524.896 km and 2767.5km in 2021 respectively. The increased in the other roads is due to the increase in the agricultural feeder roads, European Union (EU) and United Nations Office for Project Services (UNOPS) feeder roads and other feeder roads.

Table 1: Length of Roads in kilometers, 2017-2021

Road Type ¹	2017	2018	2019	2020	2021
Total Primary/main roads	817.8	817.8	817.8	847.15	847.5

¹ Primary road networks refers to the main North and South bank trunk roads originating from Banjul and Barra respectively. Secondary roads are the urban and semi-urban linking roads example Kairaba Avenue.

Paved	668.47	688.47	749	799.55	847.5
Unpaved	149.33	129.33	68.8	47.6	0
Total Secondary roads	629.29	629.29	643.99	667.65	359
Paved	214.29	214.29	228.99	436.15	64
Unpaved	415	415	415	231.5	295
Total Urban Roads					524.896
paved					261.56
Unpaved					263.336
Other roads / Tertiary	306.39	321.4	422.1	2429.3	2767.5
Paved	26.7	31.7	45	64.3	64.3
Unpaved	279.69	289.699	377.099	2365	2703.2
Total length of roads	1753.48	1768.48	1883.88	3944.1	4498.896
Of which: paved roads	909.46	934.46	1022.99	1300	1237.36
Length of paved roads as % of total length of roads	51.87	52.84	54.3	32.96	27.50364

APPENDIX

Table 1: Air traffic at Banjul International Airport by year, 2017 -2021

Air Traffic	2017	2018	2019	2020	2021
Landings	1,810	2,185	2,729	1,199	1,507
Take-off	1,808	2,179	2,733	1,199	1,501
Aircraft Movements	3,618	4,364	5,462	2,398	3,008
Passengers disembarked	5,426	6,543	241,637	102,529	98,315
Passengers embarked	157,911	202,800	232,396	93,504	101,624
Total Passengers Handled	163,337	209,343	474,033	196,033	199,939
Direct transit passengers	20,162	19,224	42,015	19,118	27,153
Freight unloaded (Kgs)	565,440	629,612	1,043,740	606,426	748,122
Freight loaded (Kgs)	830,135	821,853	632,616	539,475	754,322
Total Freight Handled	1,395,575	1,451,465	1,676,356	1,145,901	1,502,444
Freight in transit	29,010	5,242	548,391	406,149	767,116
Mail unloaded (Kgs)	23,367	29,101	9,713	5,869	22,789
Mail loaded (Kgs)	21,653	11,833	26,608	14,815	15,083
Total Mail Handled (Kgs)	45,020	40,934	36,321	20,684	37,872
Mail in transit (Kgs)	747	609	5,167	4,149	19,130

Source: GCCA and GIA

Table 2: Goods in Metric tons loaded, unloaded and handled at sea port of The Gambia from maritime vessels, 2017—2021

year	Loaded	Unloaded	Total Goods Handled
2017	362079	2,589,674	2,706,522
2018	324054	3,163,933	3,487,987
2019	381,332	2,428,783	2,810,115
2020	357,875	2,143,795	2,501,670

2021	253,503	2,400,240	2,653,743
------	---------	-----------	-----------

Source: GPA

Table 3: Number of Passengers crossing at various stations 2017-2021

STATIONS	2017	2018	2019	2020	2021
Banjul	1,566,514	1,706,067	1,774,679	1,174,245	1,759,819
Barra	1,587,558	1,752,424	1,750,633	1,172,878	1,757,211
Yellitenda	691,252	763,107	219,350	-	-
Bambatenda	480,531	778,025	203,098	-	-
Others*	172,590	171,258	145,361	225,034	194,099
Total	4,498,445	5,170,881	4,093,122	2,572,157	3,711,129

Source: Gambia Ferries Service Company

*The other ferry stations include Kaur, Janjanbureh, Barajali, Bansang, Basse, Fatoto and Baati.

Table 4: Accident Cases and Number of Persons killed or injured, 2017-2021

Year	No of accident cases recorded	(a) Fatal accidents	Number of persons killed or injured										Total number of persons killed annually	
			Person involved (sex)		(b) Serious injury accidents	Person involved (sex)		(c) Minor injury accidents	Person involved (sex)		(d) Non-injury accidents	Person involved (sex)		
			M	F		M	F		M	F		M		F
2017	802	123	102	36	269	399	190	228	234	122	182	190	49	138
2018	970	141	93	36	319	308	152	280	298	173	230	234	42	129
2019	1,123	129	113	39	386	430	189	385	370	204	223	312	28	152
2020	1,107	138	111	42	349	402	133	408	419	176	212	287	36	153
2021	1218	155	156	44	350	309	131	362	325	138	351	403	68	200
Total	9,343	1,108	896	380	2,900	3,214	1,561	3,067	2,810	1,551	2,268	1,326	236	1,276

Source: GPF

Table 5: Length of Roads and Type of Road Network (km), 2016-2020

Road Type²	2017	2018	2019	2020	2021
Total Primary/main roads	817.8	817.8	817.8	847.15	847.5
Paved	668.47	688.47	749	799.55	847.5
Unpaved	149.33	129.33	68.8	47.6	0
Total Secondary roads	629.29	629.29	643.99	667.65	359
Paved	214.29	214.29	228.99	436.15	64
Unpaved	415	415	415	231.5	295
Total Urban Roads					524.896
paved					261.56
Unpaved					263.336
Other roads / Tertiary	306.39	321.4	422.1	2429.3	2767.5
Paved	26.7	31.7	45	64.3	64.3
Unpaved	279.69	289.699	377.099	2365	2703.2
Total length of roads	1753.48	1768.48	1883.88	3944.1	4498.896
Of which: paved roads	909.46	934.46	1022.99	1300	1237.36
Length of paved roads as % of total length of roads	51.87	52.84	54.3	32.96	27.50364

Source: NRA

² Primary road networks refers to the main North and South bank trunk roads originating from Banjul and Barra respectively. Secondary roads are the urban and semi-urban linking roads example Kairaba Avenue.