



TRANSPORT STATISTICS

SUMMARY REPORT

(2022)

BY

THE TOURISM, TRANSPORT AND COMMUNICATION STATISTICS UNIT

December, 2023

Table of Contents

- List of Figures 2
- List of Acronyms and Abbreviations 3
- Foreword 4
- 1.0: AIR TRANSPORTS STATISTICS 5
 - 1.1: Passenger Type 5
 - 1.3 Freight on Transit, Loaded and Unloaded 5
 - 1.4: Mail Loaded and Unloaded..... 6
- 2.0: SEA TRANSPORT STATISTICS 7
 - 2.1: Passengers crossing at various ferry crossing stations in the Country 7
- 3.0: ROAD TRANSPORT STATISTICS 11
 - 3.1: Accidents reported by number and type of Injuries 11
 - 3.2: Number of Accident cases reported and persons killed 12
- APPENDIX..... 13

List of Figures

Figure 1: Number of Passengers by Type at Banjul International Airport, 2018 – 2022 5

Figure 2: Freight (kgs) at Banjul International Airport, 2018 – 2022..... 6

Figure 3: Mails (kgs) at Banjul International Airport, 2018 – 2022 6

Figure 4: Number of Passengers at various crossing stations 2020-2022..... 7

Figure 5: Accidents Reported and Persons Killed, 2018-2022 12

List of Acronyms and Abbreviations

GCAA	Gambia Civil Aviation Authority
GIA	Gambia International Airlines
EU	European Union
GPA	Gambia Ports Authority
GPF	Gambia Police Force
NRA	National Roads Authority
UNOPS	United Nations Office for Project Services

Foreword

This report presents the Transport Statistics of The Gambia for the period 2018-2023. It could serve as a catalyst to enhancing the transport sector of the country. The tourism, transport and communication statistics unit under the Directorate of Economic Statistics of the Gambia Bureau of Statistics (GBoS) data from the Gambia Civil Aviation Authority (GCAA), Gambia International Airlines (GIA), Gambia Ports Authority (GPA), the Gambia Police Force (GPF) and the National Roads Authority (NRA).

The data on air traffic movements is from the GCAA and GIA, and the data on sea transport is from GPA, while data on road accidents and number of registered vehicles data is from GPF and the data on the length of roads is from NRA.

The latest annual reports can be accessed on the Gambia Bureau of Statistics' website (<https://www.gbosdata.org/>). For users who have specific data needs, the tourism, transport and communication statistics Unit could offer the necessary assistance.

The Gambia Bureau of Statistics wishes to express its profound gratitude to the Statistics Units of GCAA, GIA, GPA, GPF and NRA for making available the necessary data for the compilation of the transport statistics. The bureau of statistics also wishes to thank the staff of the Tourism, Transport and Communication statistics unit for their efforts and dedication in their work and in producing this report. We hope that users will find this report useful.

Nyakassi M.B. Sanyang,

Statistician General

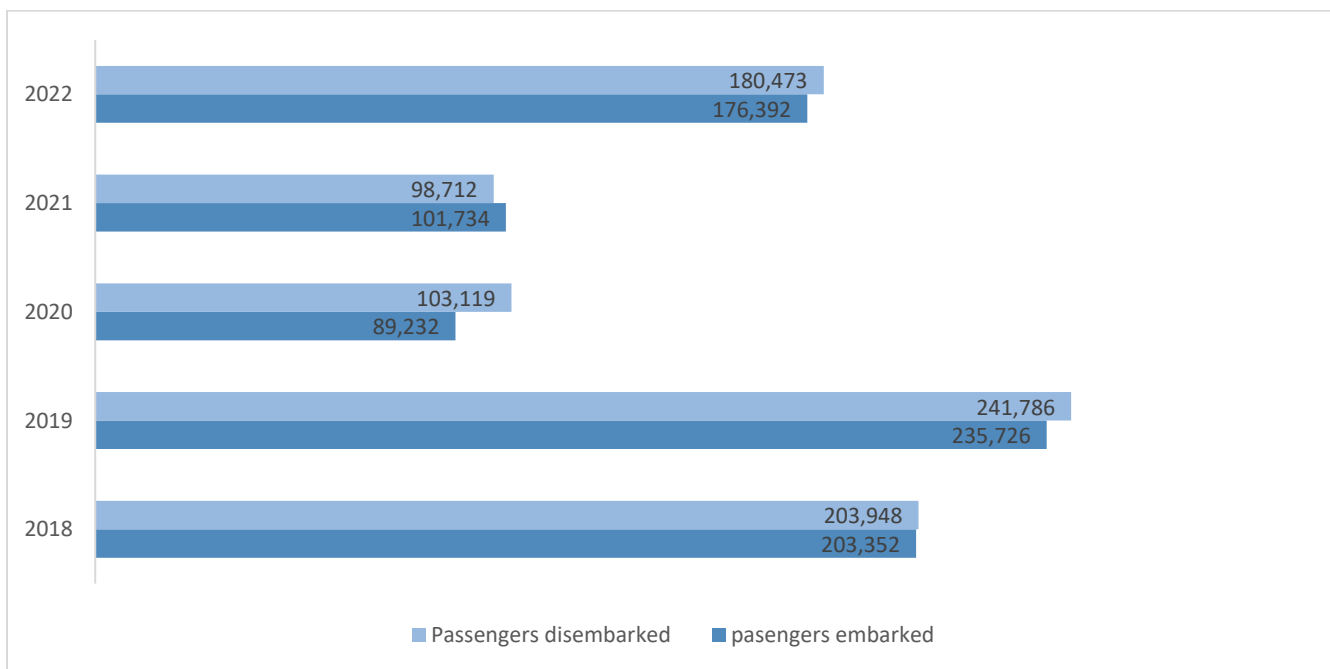
1.0: AIR TRANSPORTS STATISTICS

Air transport statistics is an important indicator to both the public and private sector. It shows how well nations are globalized and connected and promotes the efficient and timely movement of people and goods, thus leading to integration and economic growth. The air transport statistics in The Gambia comprises of different air transport movements, ranging from the movement of air crafts, passengers, freights and mails at the Banjul international Airport.

1.1: Passenger Type

The figure shows that disembarked passengers increased from 98,712 passengers in 2021 to 180,473 passengers in 2022. Similarly, the number of embarked passengers increased from 101,734 passengers in 2021 to 176,392 passengers in 2022.

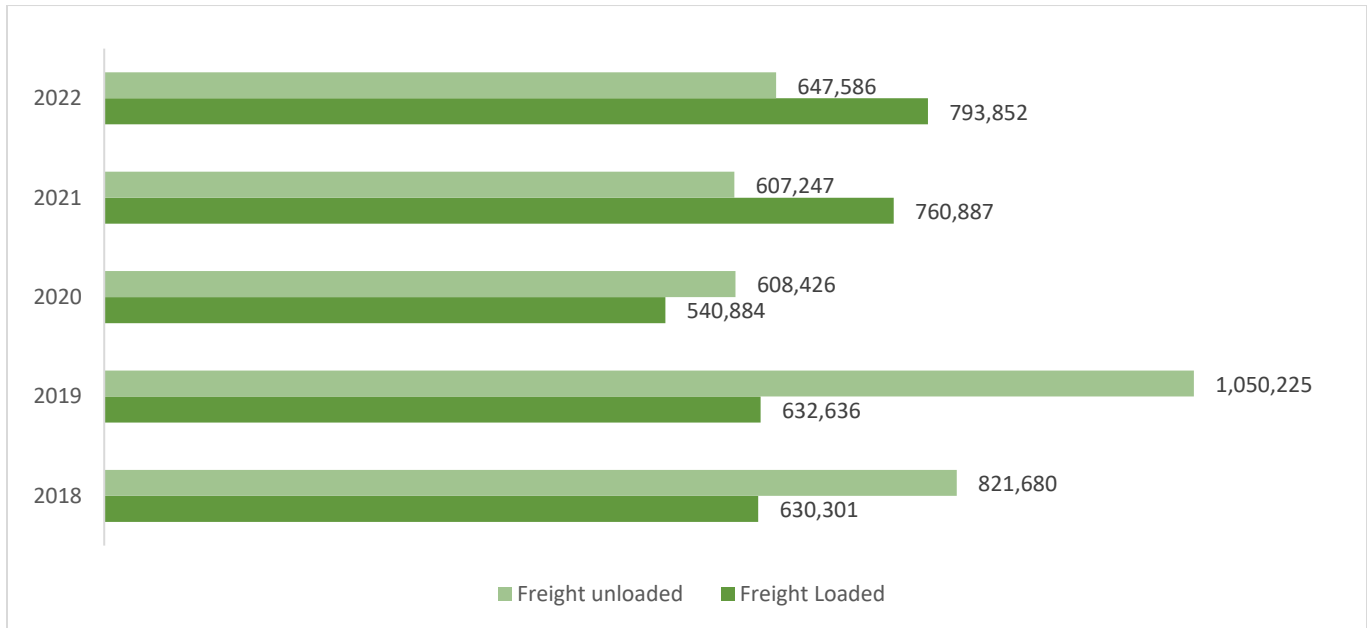
Figure 1: Number of Passengers by Type at Banjul International Airport, 2018 – 2022



1.3 Freight on Transit, Loaded and Unloaded

The weight of freight unloaded, loaded both increased from 2021 to 2022. Looking at the figure below, the weight of freight unloaded increased by 7 percent from 607,247 kgs in 2021 to 647 kgs in 2022. Similarly, freight loaded increased from 760,887 kgs in 2021 to 793,852 kgs in 2022.

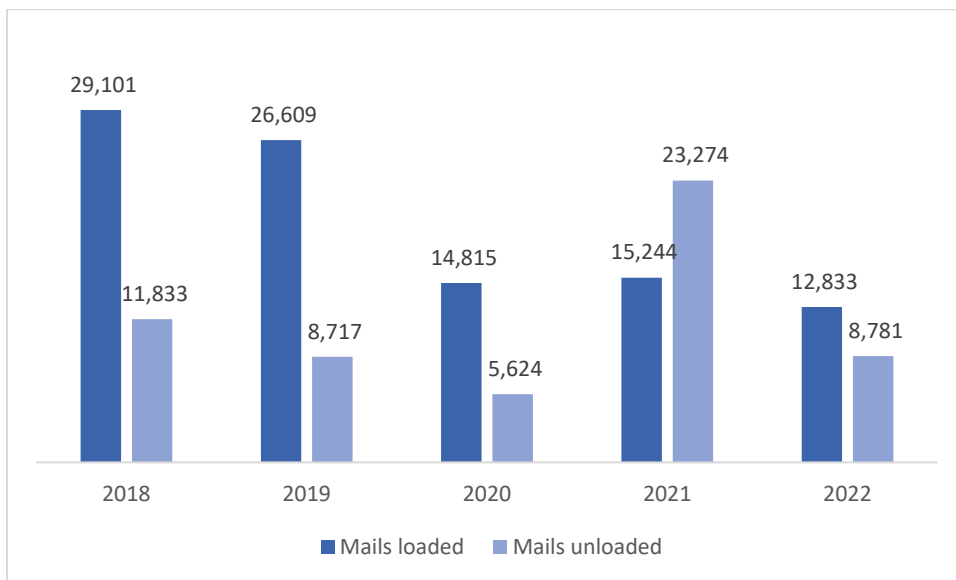
Figure 2: Freight (kgs) at Banjul International Airport, 2018 – 2022



1.4: Mail Loaded and Unloaded

The weight of mails unloaded at the Banjul International Airport decreased from 23,274 kgs in 2021 to 8,781 kgs in 2022. Similarly, the number of mails loaded decreased by about 2000 kgs from 15, 244 kgs in 2021 to 12,833 kgs in 2022.

Figure 3: Mails (kgs) at Banjul International Airport, 2018 – 2022



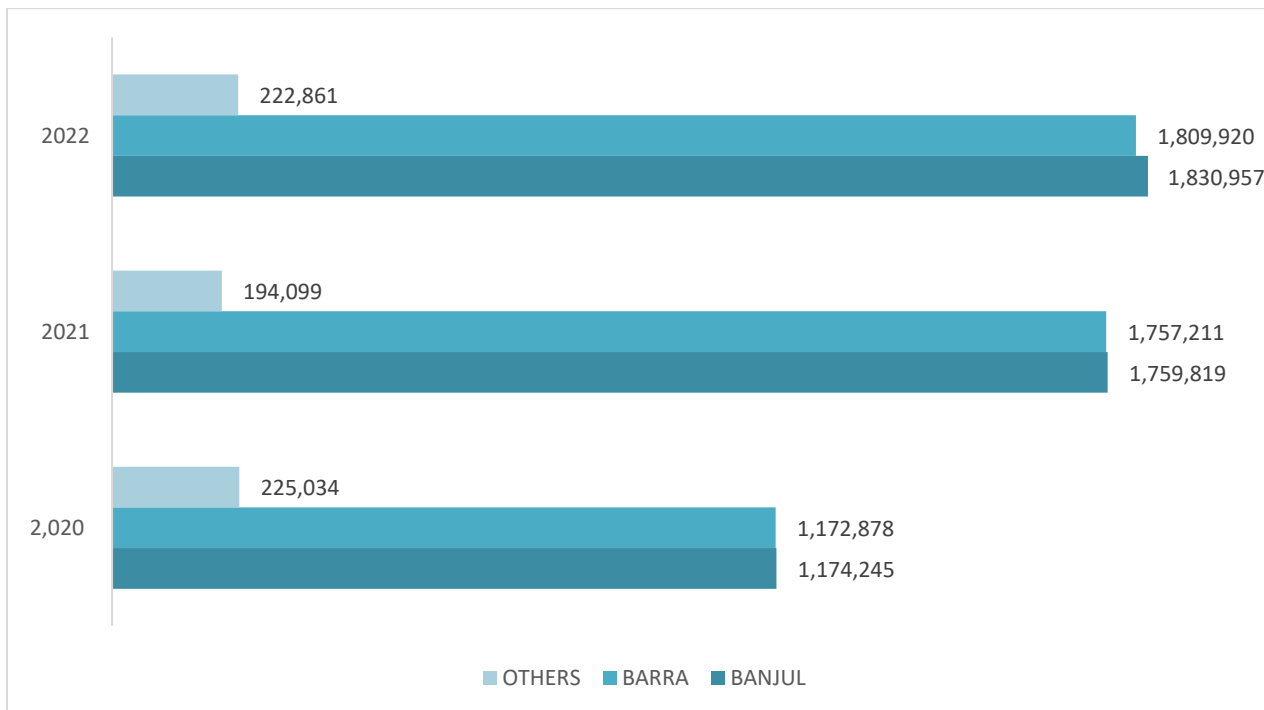
2.0: SEA TRANSPORT STATISTICS

One important indicator for openness of an economy, confidence in its markets and the size of an economy for international traders and business personnel alike is the statistics on transportation of goods in and out of a country. The Gambia as a small open economy is known to be largely dependent on the international economy, sourcing almost all its major goods from other countries. The sea transport statistics mainly entails the number of goods handled, loaded and unloaded at the sea port in Banjul from maritime vessels.

2.1: Passengers crossing at various ferry crossing stations in the Country

The Banjul and Barra crossing stations are the most engaging ferry crossing stations in The Gambia in terms of number of passengers. Both Banjul and Barra recorded an increase in the number of passengers who crossed from about 1.8 million passengers in 2022 compared to 1.7 million in 2021. The other ferry stations include Kaur, Janjanbureh, Barajali, Bansang, which recorded a total of 222,861 people crossing, an increase of 14 percent compared to 194,099 passengers in 2021.

Figure 4: Number of Passengers at various crossing stations 2020-2022



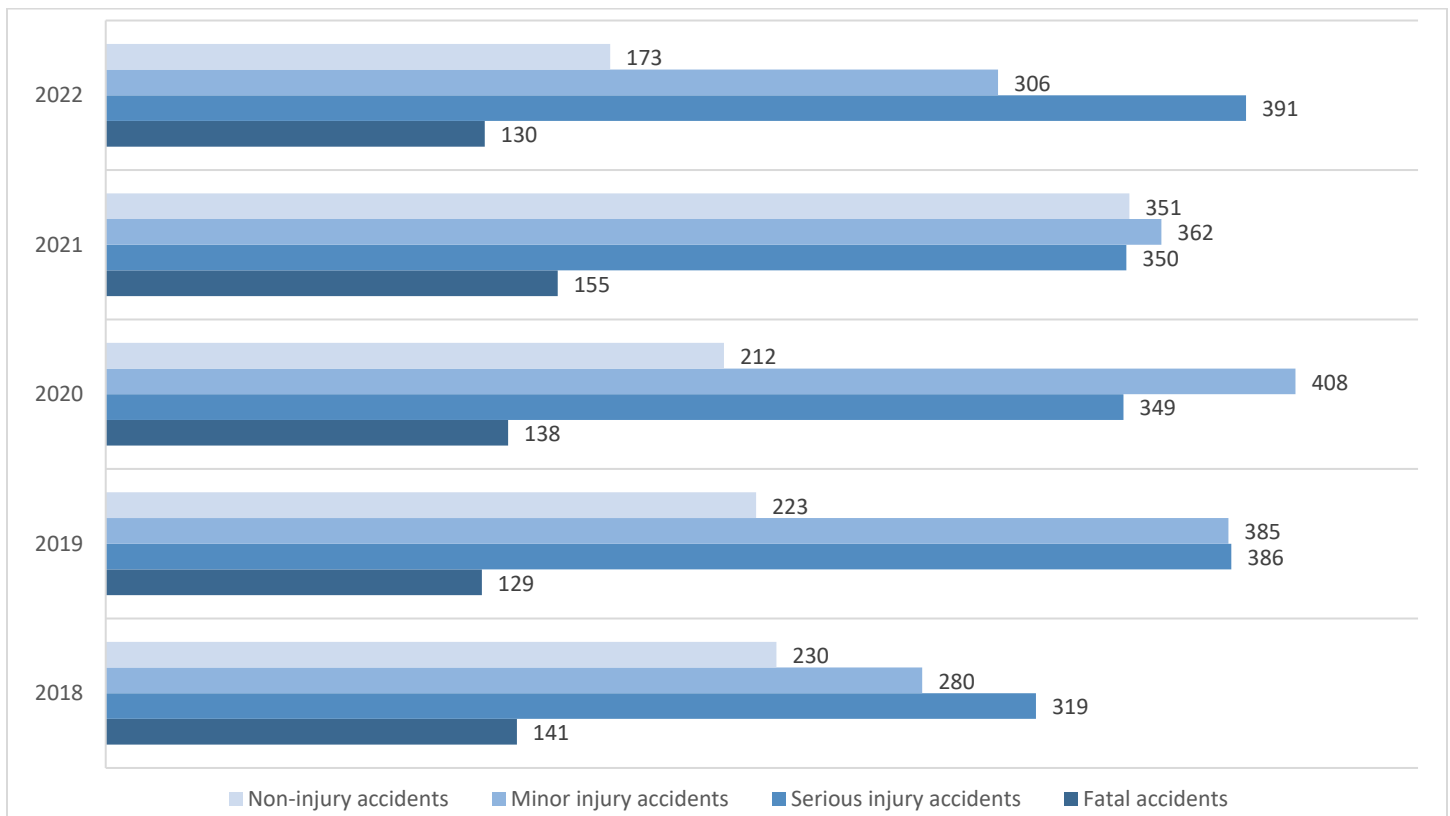
3.0: ROAD TRANSPORT STATISTICS

Road Transport Statistics provides very important statistics on number and types of accident cases reported to the traffic authorities including fatalities and injuries. It also provides information on length of primary and secondary roads as well as paved and unpaved roads available in the country and other types of roads such as tertiary. These statistics will go a long way to inform policy makers for evidence based decision making especially in terms of road infrastructure, traffic facilities, rules and regulations and on road traffic repairs and maintenance works.

3.1: Accidents reported by number and type of Injuries

The figure below shows the types of accidents and their occurrence over the years. Fatal accidents decreased from 155 cases in 2021 to 130 cases in 2022, while serious injury accidents increased from 350 cases in 2021 to 391 cases in 2022. The number of minor injury accidents and non-injury cases both decreased from 362 and 351 in 2021 to 306 and 173 in 2022 respectively. Among the categories, accidents with serious injury recorded the highest number of cases in 2022 while Minor injury accidents recorded the highest in 2021.

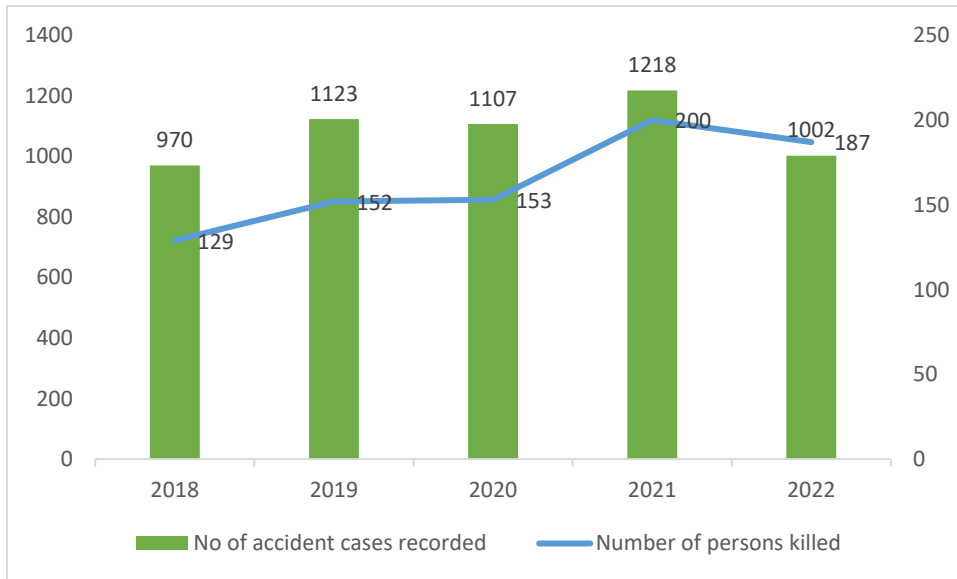
Figure 7: Number of Accident Cases Recorded by Type of Accident, 2018 – 2022



3.2: Number of Accident cases reported and persons killed

The number of accident cases recorded has generally decreased from 2021 to 2022 by 6.5 per cent. The number of people who died also decreased from 200 persons in 2021 to 187 persons in 2022.

Figure 5: Accidents Reported and Persons Killed, 2018-2022



APPENDIX

Table 1: Air traffic at Banjul International Airport by year, 2018 -2022

Air Traffic	2018	2019	2020	2021	2022
Aircraft Movements	3,618	2,616	1,135	1,542	2497
Passengers disembarked	203,948	241,786	103,119	98,712	180,473
Passengers embarked	203,352	235,726	89,232	101,734	176,392
Total Passengers Handled	407,300	477,512	192,351	200,446	356,865
Freight unloaded (Kgs)	821,680	1,050,225	608,426	607,247	647,586
Freight loaded (Kgs)	630,301	632,636	540,884	760,887	793,852
Total Freight Handled	1,451,981	1,682,861	1,149,310	1,368,134	1,441,438
Mail unloaded (Kgs)	11,833	8,717	5,624	23,274	8,781
Mail loaded (Kgs)	29,101	26,609	14,815	15,244	12,833
Total Mail Handled (Kgs)	40,934	35,326	20,439	38,518	21,614

Source: GCCA and GIA

Table 2: Number of Passengers crossing at various stations 2018-2022

STATIONS	2,020	2021	2022
BANJUL	1,174,245	1,759,819	1,830,957
BARRA	1,172,878	1,757,211	1,809,920
OTHERS	225,034	194,099	222,861

Source: Gambia Ferries Service Company

*The other ferry stations include Kaur, Janjanbureh, Barajali, Bansang, Basse, Fatoto and Baati

Table 3: Accident Cases and Number of Persons killed or injured, 2017-2021

Year	No of accident cases recorded	(a) Fatal accidents	Number of persons killed or injured										Total number of persons killed annually	
			Person involved (sex)		(b) Serious injury accidents	Person involved (sex)		(c) Minor injury accidents	Person involved (sex)		Person involved (sex)			
			M	F		M	F		M	F	M	F		
2018	970	141	93	36	319	308	152	280	298	173	230	234	42	129
2019	1,123	129	113	39	386	430	189	385	370	204	223	312	28	152
2020	1,107	138	111	42	349	402	133	408	419	176	212	287	36	153
2021	1218	155	156	44	350	309	131	362	325	138	351	403	68	200
2022	1002	130	144	43	391	502	158	306	337	158	173	230	52	187
Total	5420	693	617	204	1795	1951	763	1741	1749	849	1189	1466	226	821

Source: GPF

