



**Republic of The Gambia**

---

## **The 2022 Gambia Statistical Abstract**

---

**The Gambia Bureau of Statistics**



# Table of Contents

The 2022 Gambia Statistical Abstract .....	1
<b>Chapter 1 Population and Demography</b> .....	<b>11</b>
1.1 Population.....	11
1.1.1 Population by Sex .....	11
1.1.2 Age-Sex Distribution .....	12
1.1.3 Household Size .....	13
1.2 Poverty .....	14
1.2.1 Distribution of the Population by Absolute Poverty and LGA 2020.....	14
1.2.2 Distribution of the Population by Extreme Poverty and LGA, 2020.....	15
1.2.3 Distribution of the Population by Food Poverty and LGA, 2020 .....	16
1.2.4 Decile Dispersion Ratio by LGA .....	17
<b>Chapter 2 Macroeconomic and Financial Data</b> .....	<b>18</b>
2.1 Gross Domestic Product – Production Approach .....	18
2.1.1 Current GDP estimates (Millions of Dalasis), 2013 base year .....	18
2.1.2 Constant GDP estimates, 2013 base year .....	19
2.1.3 Contribution to GDP estimates, 2013 base year: basic price.....	20
2.1.4 GDP Growth, 2013 base year .....	21
2.1.5 GDP Deflator, 2013 base year .....	22
2.2 GDP by Expenditure Approach.....	23
2.2.1 GDP by Expenditure approach at market prices (Millions of Dalasis), 2013 base year .....	23
2.2.2 GDP by Expenditure approach at constant prices (Millions of Dalasis), (2013 base year).....	24

2.2.3	Real growth rates of GDP by Expenditure approach.....	25
2.3	The National Consumer Price Indices, January 2020 = 100.....	26
2.4	Depository Corporations Survey – Summary Account of Deposit Money Banks.....	27
2.5	Official Reserve Assets (Monthly).....	28
2.6	Exchange Rates .....	29
2.7	Interest Rates .....	30
2.8	Distribution of Outstanding Treasury Bills (In millions).....	31
2.9	Labour Statistics.....	32
2.9.1	Main labour force and labour underutilization (LU) indicators (%), GLFS 2022-2023 – Main job.....	32
2.9.2	Youth (15-35) Key Labour Market Indicators by sex, residence and local government area.....	33
2.9.3	Employed persons by branch of economic activity in main job.....	34
2.9.4	Discouraged jobseekers by sex, residence, LGA, disability and age.....	35
2.9.5	Child labour .....	36
<b>Chapter 3</b>	<b>International Merchandise Trade statistics.....</b>	<b>38</b>
3.1	Annual Trade Summary Statistics from 2007-2022 (in ‘000’ GMD).....	38
3.2	Monthly Trade Summary by Trade Flow from 2019-2022 (in ‘000’ GMD).....	39
3.3	Exports to Continents, Economic and Geographical Regions from 2012-2022, (in ‘000’ GMD) .....	40
3.4	Imports to Continents, Economic and Geographical Regions from 2012-2022, (in ‘000’ GMD) .....	40
3.5	Imports from Main Countries, 2020-2022 (in ‘000’ GMD).....	41
3.6	Exports from Main Countries, 2020-2022 (in ‘000’ GMD).....	41
3.7	Imports of Top Ten Products from 2020-2022, Value (in ‘000’ GMD).....	42
3.8	Exports of Top Ten Products from 2020-2022, Values (in ‘000’ GMD) .....	43
3.9	Imports from Ecowas Countries from 2018-2022, Value (in ‘000’ GMD).....	44

3.10	Exports to Ecowas Countries from 2018-2022, Value (in ‘000’ GMD) .....	45
3.11	Imports of Selected Basic Products from 2016-2022 (in ‘000’ GMD) .....	46
<b>Chapter 4</b>	<b>Transport and Tourism</b> .....	<b>47</b>
4.1	Visitor Arrivals.....	47
4.1.1	Air arrivals to The Gambia by nationality, 2012-2022.....	47
4.1.2	Tourist Arrivals by port of entry, 2017-2022.....	48
4.2	Air Transport .....	48
4.2.1	Air traffic at Banjul International Airport, 2016 -2022 .....	48
4.3	Road Transport.....	49
4.3.1	Countrywide Motor Traffic Accident Statistics, 2012-2022 .....	49
<b>Chapter 5</b>	<b>Education</b> .....	<b>50</b>
5.1	Early Childhood Care and Development .....	50
5.1.1	Day Care Centre (DCC), Historical Trend - Global Figures - National Level, 2013-2022.....	50
5.1.2	Early Childhood Development (ECD), Historical Trend - Global Figures - National Level, 2013-2022.....	51
5.2	Lower Basic Education (LBE) .....	51
5.2.1	LBE, Historical Trend - Global Figures - National Level, 2012-2022.....	51
5.2.2	LBE, 2020 - Global Figures - National Level.....	52
5.2.3	LBE, 2022 - Enrolment - By Grade & Gender National Level .....	52
5.2.4	LBE, 2022 - Teaching Staff - By Qualification & Gender - National Level.....	53
5.2.5	LBE, 2022 - Teaching Staff - By Qualification & Nationality - National Level.....	53
5.2.6	LBE, 2022 - Special Needs Children - By Grade &Sex - National Level.....	54
5.3	Upper Basic Education (UBE) .....	55
5.3.1	UBE, Historical Trend Global Figures National Level, 2013-2022 .....	55

5.3.2	UBE, Historical Trend Main Statistics School Indicators National Level, 2013-2022 .....	55
5.3.3	UBE, 2022 - Global Figures - National Level .....	56
5.3.4	UBE, 2022 - Enrolment - By Grade & Gender.....	56
5.3.5	UBE, 2022 - Enrolment - By Age & Gender.....	57
5.3.6	UBE, 2022 - Special Needs Children - By Grade & Gender - National Level.....	58
5.3.7	UBE, 2022 - Teaching Staff - By Qualification & Gender - National Level .....	59
5.3.8	UBE, 2022 - Teaching Staff - By Qualification & Nationality - National Level .....	59
5.4	Senior Secondary Education (SSE).....	60
5.4.1	SSE – Historical Trend - Global Figures - National Level, 2012-2022.....	60
5.4.2	SSE, Historical Trend - Main Statistics - School Indicators - National Level, 2012-2022 .....	61
5.4.3	SSE, 2022 - Global Figures - National Level .....	61
5.4.4	SSE, 2021 - Enrolment - By Grade & Gender - National Level.....	62
5.4.5	SSE, 2022 - Enrolment - By Age & Gender - National Level.....	62
5.4.6	SSE, 2022 - Special Needs Children - By Grade & Gender - National Level.....	63
5.4.7	Teaching Staff - By Qualification & Gender - National Level.....	64
5.4.8	Teaching Staff - By Qualification & Nationality - National Level .....	64
<b>Chapter 6</b>	<b>Health and Nutrition</b> .....	<b>65</b>
6.1	Health Facilities and Personnel.....	65
6.2	Expenditure on Health.....	67
6.2.1	Summary of Health Indicators, The Gambia, 2021.....	67
6.3	Malaria .....	69
6.4	Deliveries .....	73
6.5	Deaths.....	75

6.6	Family Planning .....	76
6.7	Immunization .....	77
6.8	Noncommunicable Diseases .....	78
6.9	Mental Disorder.....	80
6.10	Eye Conditions .....	81
6.11	Nutrition.....	82

## LIST OF TABLES

<i>Table 1.1.1: Distribution of Population by Sex and Local Government Area</i> .....	11
<i>Table 1.1.2: Distribution of Population by Sex and Broad Age-groups</i> .....	12
<i>Table 1.1.3: Distribution of Households by Household Composition, Local Government Area and Residence</i> .....	13
<i>Table 1.2.1: Distribution of the Population by Absolute Poverty and LGA 2020</i> .....	14
<i>Table 1.2.2: Distribution of the Population by Extreme Poverty and LGA, 2020</i> .....	15
<i>Table 1.2.3: Distribution of the Population by Food Poverty and LGA, 2020</i> .....	16
<i>Table 1.2.4: Decile Dispersion Ratio by LGA, 2020</i> .....	17
<i>Table 2.1.1: Current GDP estimates, 2013 base year</i> .....	18
<i>Table 2.1.2 Constant GDP estimates, 2013 base year</i> .....	19
<i>Table 2.1.3: Contribution to GDP estimates, 2013 base year: basic price</i> .....	20
<i>Table 2.1.4: GDP Growth, 2013 base year</i> .....	21
<i>Table 2.1.5: GDP Deflator, 2013 base year</i> .....	22
<i>Table 2.2.1: GDP by Expenditure approach at market prices (Millions of Dalasis), 2013 base year</i> .....	23
<i>Table 2.2.2: GDP by Expenditure approach at constant prices (Millions of Dalasis), 2013 base year</i> .....	24
<i>Table 2.2.3: Real growth rates of GDP by Expenditure approach</i> .....	25
<i>Table 2.3.1 Consumer Price Index</i> .....	26
<i>Table 2.4.1: Depository Corporations Survey – Summary Account of Deposit Money Banks</i> .....	27
<i>Table 2.5.1: Official Reserve Assets</i> .....	28
<i>Table 2.6.1: Exchange Rates</i> .....	29
<i>Table 2.7.1: Interest rates</i> .....	30
<i>Table 2.8.1: Distribution of Outstanding Treasury Bills (In millions)</i> .....	31
<i>Table 2.9.1: Main labour force and labour underutilization (LU) indicators (%), GLFS 2022-2023 – Main job</i> .....	32
<i>Table 2.9.2: Youth (15-35) Key Labour Market Indicators by sex, residence and local government area</i> .....	33
<i>Table 2.9.3: Employed persons by branch of economic activity in main job</i> .....	35
<i>Table 2.9.4: Discouraged jobseekers by sex, residence, LGA, disability and age</i> .....	36
<i>Table 2.9.5: Percentage distribution of children in child labour, by age group, sex, residence and LGA</i> .....	37

<i>Table 3.1.1: Annual Trade Summary Statistics from 2007-2022 (in '000' GMD)</i> .....	38
<i>Table 3.2.1: Monthly Trade Summary by Trade Flow from 2019-2022 (in '000' GMD)</i> .....	39
<i>Table 3.3.1: Exports to Continents, Economic and Geographical Regions from 2012-2022 (in '000' GMD)</i> .....	40
<i>Table 3.4.1: Imports to Continents, Economic and Geographical Regions from 2012-2022 (in '000' GMD)</i> .....	40
<i>Table 3.5.1: Imports from Main Countries, 2020-2022 (in '000' GMD)</i> .....	41
<i>Table 3.6.1: Exports from Main Countries, 2020-2022 (in '000' GMD)</i> .....	41
<i>Table 3.7.1: Imports of Top Ten Products from 2020-2022, Value (in '000' GMD)</i> .....	42
<i>Table 3.8.1: Exports of Top Ten Products from 2020-2022, Values (in '000' GMD)</i> .....	43
<i>Table 3.9.1: Imports from Ecowas Countries from 2018-2022, Value (in '000' GMD)</i> .....	44
<i>Table 3.10.1: Exports to Ecowas Countries from 2018-2022, Value (in '000' GMD)</i> .....	45
<i>Table 3.11.1: Imports of Selected Basic Products from 2016-2022 (in '000' GMD)</i> .....	46
<i>Table 4.1.1: Air arrivals to The Gambia by nationality, 2012-2022</i> .....	47
<i>Table 4.1.2: Tourist Arrivals by port of entry, 2012-2022</i> .....	48
<i>Table 4.2.1: Air traffic at Banjul International Airport, 2016 -2022</i> .....	48
<i>Table 4.3.1: Countrywide Motor Traffic Accident Statistics, 2012-2022</i> .....	49
<i>Table 5.1.1: Day Care Centre (DCC), Historical Trend - Global Figures - National Level, 2013-2022</i> .....	50
<i>Table 5.1.2: Early Childhood Development (ECD), Historical Trend - Global Figures - National Level, 2013-2022</i> .....	51
<i>Table 5.2.1: LBE, Historical Trend - Global Figures - National Level, 2012-2022</i> .....	51
<i>Table 5.2.2: LBE, 2022 - Global Figures - National Level</i> .....	52
<i>Table 5.2.3: LBE, 2022 - Enrolment - By Grade &amp; Gender National Level</i> .....	52
<i>Table 5.2.4: LBE, 2022 - Teaching Staff - By Qualification &amp; Gender - National Level</i> .....	53
<i>Table 5.2.5: LBE, 2022 - Teaching Staff - By Qualification &amp; Nationality - National Level</i> .....	53
<i>Table 5.2.6: LBE, 2022 - Special Needs Children - By Grade &amp; Sex - National Level</i> .....	54
<i>Table 5.3.1: UBE, Historical Trend Global Figures National Level, 2013-2022</i> .....	55
<i>Table 5.3.2: UBE, Historical Trend Main Statistics School Indicators National Level, 2013-2022</i> .....	55
<i>Table 5.3.3: UBE, 2022 - Global Figures - National Level</i> .....	56
<i>Table 5.3.4: UBE, 2022 - Enrolment - By Grade &amp; Gender – National level</i> .....	56
<i>Table 5.3.5: UBE, 2022 - Enrolment - By Age &amp; Gender</i> .....	57



<i>Table 5.3.6: UBE, 2022 - Special Needs Children - By Grade &amp; Gender - National Level.....</i>	<i>58</i>
<i>Table 5.3.7: UBE, 2022 - Teaching Staff - By Qualification &amp; Gender - National Level .....</i>	<i>59</i>
<i>Table 5.3.8: UBE, 2022 - Teaching Staff - By Qualification &amp; Nationality - National Level .....</i>	<i>59</i>
<i>Table 5.4.1: SSE, Historical Trend - Global Figures - National Level, 2012-2022 .....</i>	<i>60</i>
<i>Table 5.4.2: SSE, Historical Trend - Main Statistics - School Indicators - National Level, 2012-2022 .....</i>	<i>61</i>
<i>Table 5.4.3: SSE, 2022 - Global Figures - National Level.....</i>	<i>61</i>
<i>Table 5.4.4: SSE, 2022 - Enrolment - By Grade &amp; Gender - National Level .....</i>	<i>62</i>
<i>Table 5.4.5: SSE, 2022 - Enrolment - By Age &amp; Gender - National Level.....</i>	<i>62</i>
<i>Table 5.4.6: SSE, 2022 - Special Needs Children - By Grade &amp; Gender - National Level.....</i>	<i>63</i>
<i>Table 5.4.7: SSE, 2022 - Teaching Staff - By Qualification &amp; Gender - National Level .....</i>	<i>64</i>
<i>Table 5.4.8: SSE, 2022 - Teaching Staff - By Qualification &amp; Nationality - National Level .....</i>	<i>64</i>
<i>Table 6.1.1: Number of service delivery points, The Gambia, 2022.....</i>	<i>65</i>
<i>Table 6.1.2: Number and percentage of PHC villages by health region, The Gambia, 2022 .....</i>	<i>66</i>
<i>Table 6.2.1: Number and percentage of PHC villages by health region, The Gambia, 2022 .....</i>	<i>67</i>
<i>Table 6.4.1: HIV Counselling and Testing in General Population January – December 2022 .....</i>	<i>71</i>
<i>Table 6.5.1: Number of deliveries reported by regions in 2022 .....</i>	<i>74</i>
<i>Table 6.5.2: Number of deliveries by type conducted at the health facilities in The Gambia, 2022 .....</i>	<i>74</i>
<i>Table 6.6.1: Deaths at Facility by Region, The Gambia, 2022 .....</i>	<i>75</i>
<i>Table 6.7.1: Number and Percentage of Family Planning Services New Acceptors and revisits offered at Health Facilities, The Gambia 2022 .....</i>	<i>76</i>
<i>Table 6.8.1: Vaccination coverage by region in The Gambia, 2022.....</i>	<i>77</i>
<i>Table 6.9.1: Number of Noncommunicable Diseases Episodes and Conditions seen at OPD by Gender, The Gambia 2022.....</i>	<i>78</i>
<i>Table 6.9.2: Number of Non-Communicable Diseases Related Deaths by Gender, The Gambia 2022 .....</i>	<i>79</i>
<i>Table 6.10.1: Trend of outpatient mental disorder cases last five years .....</i>	<i>80</i>
<i>Table 6.10.2: Trend of mental disorder inpatient cases last five years.....</i>	<i>80</i>
<i>Table 6.11.1: Number and percentage of major eye conditions reported in The Gambia, 2022.....</i>	<i>81</i>
<i>Table 6.11.2: Eye condition seen at outpatient department by region in  The Gambia, 2022.....</i>	<i>81</i>
<i>Table 6.12.1: Nutritional Indicators 2022 by LGA The Gambia.....</i>	<i>82</i>

## LIST OF FIGURES

<i>Figure 6.3.1: Malaria Incidence per 1,000 population, The Gambia 2022</i> .....	69
<i>Figure 6.3.2: Reported Malaria cases per 1000 population from 2018 – 2022.</i> .....	70
<i>Figure 6.4.1: Currently on treatment by ART site 2022 December</i> .....	72
<i>Figure 6.5.1 Percentage of obstetric, labour and delivery complications recorded at health facilities, The Gambia, 2022</i> .....	73

# Chapter 1 Population and Demography

## 1.1 Population

### 1.1.1 Population by Sex

Table 1.1.1: Distribution of Population by Sex and Local Government Area

LGA	Total		Male		Female		Sex Ratio
	Count	Percent	Count	Percent	Count	Percent	
<i>Urban</i>	<i>1,408,362</i>	<i>58.2</i>	<i>699,107</i>	<i>58.1</i>	<i>709,255</i>	<i>58.3</i>	<i>99</i>
<i>Rural</i>	<i>1,010,459</i>	<i>41.8</i>	<i>503,829</i>	<i>41.9</i>	<i>506,629</i>	<i>41.7</i>	<i>99</i>
Banjul	25,275	1.0	12,746	1.1	12,529	1.0	102
Kanifing	391,270	16.2	195,519	16.3	195,751	16.1	100
Brikama	1,089,813	45.1	544,793	45.3	545,020	44.8	100
Mansakonko	94,628	3.9	47,504	3.9	47,124	3.9	101
Kerewan	268,657	11.1	134,163	11.2	134,494	11.1	100
Kuntaur	127,367	5.3	62,835	5.2	64,532	5.3	97
Janjanbureh	146,226	6.0	71,954	6.0	74,272	6.1	97
Basse	275,584	11.4	133,422	11.1	142,163	11.7	94
<b>Total</b>	<b>2,418,821</b>	<b>100.0</b>	<b>1,202,936</b>	<b>100.0</b>	<b>1,215,884</b>	<b>100.0</b>	<b>99</b>

Source: The 2022-23 Gambia Labour Force Survey

### 1.1.2 Age-Sex Distribution

Table 1.1.2: Distribution of Population by Sex and Broad Age-groups

Age-group	Male		Female		Total	
	Count	Percent	Count	Percent	Count	Percent
0-4	182,339	15.2	168,278	13.8	350,617	14.5
5-9	177,587	14.8	167,040	13.7	344,627	14.2
10-14	168,898	14.0	157,458	13.0	326,356	13.5
15-19	139,631	11.6	141,535	11.6	281,166	11.6
20-24	115,537	9.6	121,061	10.0	236,598	9.8
25-29	90,902	7.6	104,825	8.6	195,727	8.1
30-34	69,542	5.8	85,682	7.0	155,224	6.4
35-39	56,440	4.7	66,693	5.5	123,133	5.1
40-44	52,874	4.4	53,958	4.4	106,832	4.4
45-49	38,026	3.2	37,017	3.0	75,043	3.1
50-54	32,075	2.7	32,318	2.7	64,392	2.7
55-59	21,079	1.8	20,330	1.7	41,409	1.7
60-64	22,543	1.9	21,352	1.8	43,895	1.8
65+	35,465	2.9	38,337	3.2	73,802	3.1
<b>Total</b>	<b>1,202,936</b>	<b>100.0</b>	<b>1,215,884</b>	<b>100.0</b>	<b>2,418,821</b>	<b>100.0</b>

Source: The 2022-23 Gambia Labour Force Survey

### 1.1.3 Household Size

Table 1.1.3: Distribution of Households by Household Composition, Local Government Area and Residence

<b>LGA</b>	<b>1 person</b>	<b>2-4 persons</b>	<b>5-6 persons</b>	<b>7-10 persons</b>	<b>11+ persons</b>	<b>Mean Household size</b>
<b>The Gambia</b>	<b>4.2</b>	<b>17.2</b>	<b>18.0</b>	<b>30.5</b>	<b>30.1</b>	<b>9.2</b>
<i>Urban</i>	<i>5.5</i>	<i>21.0</i>	<i>19.9</i>	<i>29.5</i>	<i>24.0</i>	<i>8.2</i>
<i>Rural</i>	<i>1.7</i>	<i>10.0</i>	<i>14.2</i>	<i>32.3</i>	<i>41.8</i>	<i>11.2</i>
Banjul	10.1	30.6	25.4	24.0	9.9	6.0
Kanifing	9.2	26.6	22.8	26.0	15.4	6.7
Brikama	3.0	17.0	17.4	31.7	30.9	9.3
Mansakonko	2.2	17.5	21.0	36.4	23.0	8.8
Kerewan	1.1	8.5	14.6	35.0	40.8	11.0
Kuntaur	1.4	6.3	12.6	31.1	48.5	11.9
Janjanbureh	1.7	10.2	16.3	36.6	35.3	10.0
Basse	3.6	10.4	13.0	25.0	48.0	12.3

Source: The 2022-23 Gambia Labour Force Survey

## 1.2 Poverty

### 1.2.1 Distribution of the Population by Absolute Poverty and LGA 2020

Table 1.2.1: Distribution of the Population by Absolute Poverty and LGA 2020

LGA	Head count %	Poverty gap %	Poverty severity %	Population distribution	Poor population %	Number of poor
<b>THE GAMBIA</b>		<b>19.44892</b>	<b>9.41041</b>	<b>2,027,695</b>	<b>100</b>	<b>1,083,373</b>
<i>Rural</i>	<b>76.70</b>	<b>30.8392</b>	<b>15.66983</b>	<b>912,051</b>	<b>64.6</b>	<b>699,572</b>
<i>Urban</i>	<b>34.40</b>	<b>10.13724</b>	<b>4.29326</b>	<b>1,115,643</b>	<b>35.4</b>	<b>383,801</b>
Banjul/Kanifing	11.28	2.01538	0.7135	379,739	4.0	42,841
Other urban	46.33	14.32826	6.14049	735,904	31.5	340,959
Banjul	7.58	0.80955	0.12355	32,663	0.23	2,475
Kanifing	11.63	2.12886	0.76902	347,076	3.73	40367
Brikama	48.28	16.05302	7.2585	636,934	28.38	307,501
Mansakonko	63.87	23.3932	11.18107	102,420	6.04	65,421
Kerewan	73.79	29.31658	14.80668	279,494	19.04	206,231
Kuntaur	86.26	39.9675	21.98223	116,690	9.29	100,656
Janjanbureh	68.17	24.63203	11.69221	127,846	8.04	87,151
Basse	71.14	26.11684	12.59547	384,571	25.25	273,572

Source: Gambia Bureau of Statistics, Integrated Household Survey, 2020

## 1.2.2 Distribution of the Population by Extreme Poverty and LGA, 2020

Table 1.2.2: Distribution of the Population by Extreme Poverty and LGA, 2020

LGA	Head count %	Poverty gap %	Poverty severity %	Population distribution	Poor population %	Number of poor
<b>THE GAMBIA</b>	<b>26.3</b>	<b>7.5</b>	<b>3.1</b>	<b>2027694.7</b>	<b>100</b>	<b>534,018</b>
<b>Rural</b>	<b>44.1</b>	<b>13.1</b>	<b>5.4</b>	<b>912051.3</b>	<b>75.39</b>	<b>402,572</b>
<b>Urban</b>	<b>11.8</b>	<b>2.9</b>	<b>1.1</b>	<b>1115643.4</b>	<b>24.61</b>	<b>131,446</b>
Banjul/Kanifing	0.9	0.4	0.3	379739.3	0.63	3,340
Other urban	17.4	4.2	1.6	735904	23.99	128,106
Banjul	0.0	0.0	0.0	32663.06	0.00	
Kanifing	1.0	0.4	0.3	347076.25	0.63	3,340
Brikama	20.6	5.4	2.0	636934.09	24.56	131,139
Mansakonko	30.9	8.8	3.5	102420.3	5.92	31,639
Kerewan	40.4	12.2	5.2	279493.5	21.12	112,793
Kuntaur	61.1	19.8	8.6	116690.3	13.35	71,288
Janjanbureh	34.9	9.0	3.5	127845.8	8.36	44,619
Basse	36.2	10.0	4.0	384571.3	26.07	139,200

Source: Gambia Bureau of Statistics, Integrated Household Survey, 2020

### 1.2.3 Distribution of the Population by Food Poverty and LGA, 2020

Table 1.2.3: Distribution of the Population by Food Poverty and LGA, 2020

LGA	Head count %	Poverty gap %	Poverty severity %	Population distribution	Poor population%	Number of poor
<b>THE GAMBIA</b>	60.2	21.5	10.4	<b>2027694.7</b>	<b>100</b>	<b>1,220,534</b>
<b>Rural</b>	<b>73.2</b>	<b>28.9</b>	<b>14.5</b>	<b>912051.3</b>	<b>54.68</b>	<b>667,378</b>
<b>Urban</b>	<b>49.6</b>	<b>15.5</b>	<b>7.0</b>	<b>1115643.4</b>	<b>45.32</b>	<b>553,156</b>
Banjul/Kanifing	32.3	6.9	2.4	379739.3	<b>10.03</b>	122,468
Other urban	58.5	20.0	9.3	735904	<b>35.29</b>	430,688
Banjul	14.8	3.9	1.4	32663.06	<b>0.39</b>	4820
Kanifing	33.9	7.2	2.5	347076.25	<b>9.64</b>	117,648
Brikama	61.8	22.4	10.9	636934.09	<b>32.25</b>	393,611
Mansakonko	62.6	22.8	10.8	102420.3	<b>5.25</b>	64,118
Kerewan	73.7	28.6	14.5	279493.5	<b>16.88</b>	206,078
Kuntaur	79.1	34.1	17.7	116690.3	<b>7.56</b>	92,320
Janjanbureh	60.8	20.6	9.2	127845.8	<b>6.37</b>	77,731
Basse	68.7	25.5	12.4	384571.3	<b>21.65</b>	264,208

Source: Gambia Bureau of Statistics, Integrated Household Survey, 2020

Note: Food poverty is when a household cannot meet the daily required minimum calories of 2400 kilocalories per person per day



## 1.2.4 Decile Dispersion Ratio by LGA

Table 1.2.4: Decile Dispersion Ratio by LGA, 2020

LGA	Bottom half of population		Upper half of the distribution		Interquartile	
	p25/p10	p50/p25	p75/p50	p90/p50	range	Tails
<b>The Gambia</b>	<b>1.389</b>	<b>1.397</b>	<b>1.359</b>	<b>6.87</b>	<b>1.898</b>	<b>13.331</b>
<i>Rural</i>	<b>1.367</b>	<b>1.35</b>	<b>1.252</b>	<b>7.332</b>	<b>1.69</b>	<b>13.535</b>
<i>Urban</i>	<b>1.444</b>	<b>1.453</b>	<b>1.416</b>	<b>6.392</b>	<b>2.058</b>	<b>13.406</b>
Banjul			1.321	4.626		
Kanifing	1.000	5.359	1.439	5.959	7.714	31.939
Brikama	1.376	1.393	1.374	6.206	1.914	11.9
Mansakonko	1.345	1.397	1.307	4.599	1.825	8.641
Kerewan	1.402	1.377	1.281	4.811	1.765	9.287
Kuntaur	1.323	1.28	1.189	6.74	1.523	11.411
Janjanbureh	1.412	1.348	1.304	16.336	1.757	31.084
Basse	1.398	1.377	1.359	5.296	1.754	10.196

Source: Gambia Bureau of Statistics, Integrated Household Survey, 2020

## Chapter 2 Macroeconomic and Financial Data

### 2.1 Gross Domestic Product – Production Approach

#### 2.1.1 Current GDP estimates (Millions of Dalasis), 2013 base year

Table 2.1.1: Current GDP estimates, 2013 base year

ISIC Rev.4	Industry	2016	2017	2018	2019	2020	2021	2022*
	<b>Gross Domestic Product (GDP) market price</b>	<b>64,389,939,269</b>	<b>70,142,188,245</b>	<b>80,445,799,940</b>	<b>90,793,764,451</b>	<b>93,329,809,125</b>	<b>105,487,037,527</b>	<b>122,564,063,217</b>
A	<b>Agriculture, forestry and fishing</b>	<b>14,076,528,855</b>	<b>14,731,188,513</b>	<b>15,985,864,549</b>	<b>18,162,426,274</b>	<b>19,826,989,528</b>	<b>24,873,070,984</b>	<b>29,651,805,671</b>
	Crop	7,130,316,899	6,525,694,144	6,565,258,123	6,195,274,738	6,729,393,462	8,323,574,874	11,179,228,682
	Livestock	2,957,402,638	2,936,857,005	2,979,236,913	3,134,601,341	3,735,504,497	4,588,344,323	6,579,886,747
	Forestry and logging	581,257,267	585,764,484	590,306,652	594,884,040	599,496,923	604,145,575	799,378,460
	Fishing and aquaculture	3,407,552,051	4,682,872,879	5,851,062,862	8,237,666,155	8,762,594,646	11,357,006,212	11,093,311,783
	<b>Industry</b>	<b>13,480,415,601</b>	<b>12,550,369,899</b>	<b>13,925,510,509</b>	<b>15,691,523,889</b>	<b>15,729,512,425</b>	<b>16,753,581,213</b>	<b>18,563,523,677</b>
B	Mining and quarrying	238,886,001	324,119,268	369,804,639	459,778,292	499,169,998	544,767,826	531,016,783
C	Manufacturing	3,596,987,455	3,134,859,327	3,423,342,929	3,438,520,583	2,439,066,111	2,006,439,254	2,345,125,996
D	Electricity, gas, steam and air conditioning supply	638,763,329	584,594,639	1,177,210,123	1,404,896,223	1,602,360,472	1,712,264,607	2,003,705,031
	Water supply, sewerage, waste management and remediation activities	478,908,320	467,552,861	463,690,273	506,358,380	514,489,006	454,566,660	428,526,733
F	Construction	8,526,870,495	8,039,243,804	8,491,462,544	9,881,970,411	10,674,426,838	12,035,542,866	13,255,149,133
	<b>Services</b>	<b>31,421,024,709</b>	<b>37,473,714,537</b>	<b>44,167,774,504</b>	<b>49,731,583,626</b>	<b>50,354,891,216</b>	<b>56,322,856,920</b>	<b>67,173,073,381</b>
G	Wholesale and retail trade; repair of motors and motorcycles	18,169,200,983	22,902,452,764	27,340,190,079	30,302,758,949	30,616,412,737	34,236,331,383	40,747,959,164
H	Transport and storage	2,073,521,442	2,295,478,035	2,597,475,043	2,965,788,043	2,945,806,453	3,340,739,919	3,029,942,683
I	Accommodation and food service activities	1,074,571,746	1,154,292,081	1,434,727,393	1,870,387,084	695,413,154	883,023,767	2,255,660,610
J	Information and Communication	1,821,550,409	2,320,360,266	2,548,622,354	2,906,126,945	3,168,308,291	3,161,666,542	3,759,801,358
K	Financial and insurance activities	1,164,430,371	1,417,064,822	2,449,718,877	2,759,729,668	3,344,417,322	3,917,655,435	4,647,898,777
L	Real estate activities	1,337,181,693	1,424,663,272	1,504,918,403	1,598,996,018	1,917,749,355	1,988,007,209	2,478,493,091
M	Professional, scientific and technical activities	135,880,705	122,136,147	121,307,828	115,071,503	132,737,796	132,036,687	146,293,747
N	Administrative and support service activities	755,364,486	844,326,020	822,999,392	860,968,255	565,316,569	617,873,254	666,086,190
O	Public administration and defense; compulsory social security	1,651,124,042	1,694,960,564	1,994,684,677	2,570,298,667	2,934,853,602	3,341,246,864	3,985,128,551
P	Education	1,364,573,976	1,507,407,823	1,540,212,196	1,756,987,509	2,061,170,177	2,512,983,045	3,055,544,618
Q	Human health and social work activities	486,319,118	448,754,214	476,964,130	623,495,399	817,070,564	967,995,154	1,134,003,816
R	Arts, entertainment and recreation	387,607,013	420,039,952	450,601,541	491,421,693	300,111,499	333,748,992	405,600,196
S	Other service activities	999,698,725	921,778,575	885,352,590	909,553,895	855,523,694	889,548,669	860,660,581
	<b>GDP basic price (Gross Value Added)</b>	<b>58,977,969,166</b>	<b>64,755,272,948</b>	<b>74,079,149,561</b>	<b>83,585,533,790</b>	<b>85,911,393,169</b>	<b>97,949,509,117</b>	<b>115,388,402,729</b>
	Taxes less subsidies on products (+)	5,411,970,103	5,386,915,297	6,366,650,379	7,208,230,661	7,418,415,957	7,537,528,410	7,175,660,488
	<b>Items</b>							
	Population estimates	2,020,414	2,083,429	2,147,677	2,213,134	2,279,884	2,348,036	2,417,471
	GDP per Capita (GMD)	31,870	33,667	37,457	41,025	40,936	44,926	50,699
	GDP per Capita (USD)	727	722	757	807	802	872	932
	Exchange rate (1USD to GMD) annual average	43.82	46.61	49.46	50.83	51.04	51.54	54.39
	2022* Provisional data							

Source: Gambia Bureau of Statistics (GBoS)

## 2.1.2 Constant GDP estimates, 2013 base year

Table 2.1.2 Constant GDP estimates, 2013 base year

ISIC Rev.4	Industry	2016	2017	2018	2019	2020	2021	2022*
	<b>Gross Domestic Product (GDP) market price</b>	<b>51,732,660,424</b>	<b>54,227,525,507</b>	<b>58,150,827,547</b>	<b>61,769,002,853</b>	<b>62,134,358,703</b>	<b>65,400,121,203</b>	<b>68,608,094,899</b>
A	<b>Agriculture, forestry and fishing</b>	<b>11,785,258,710</b>	<b>11,269,163,904</b>	<b>11,685,136,939</b>	<b>11,672,049,279</b>	<b>12,908,210,151</b>	<b>14,673,865,657</b>	<b>15,208,869,236</b>
	Crop	6,566,629,067	5,352,138,357	5,201,524,753	4,467,407,136	4,851,164,431	5,273,600,148	5,687,537,262
	Livestock	1,954,384,914	1,741,489,551	1,643,581,612	1,616,066,550	1,852,128,149	1,968,855,137	2,519,629,353
	Forestry and logging	461,759,890	408,009,219	333,723,179	252,716,152	247,245,577	236,527,506	262,368,496
	Fishing and aquaculture	2,802,484,838	3,767,526,777	4,506,307,395	5,335,859,440	5,957,671,994	7,194,882,867	6,739,334,125
	<b>Industry</b>	<b>9,423,800,547</b>	<b>9,089,466,573</b>	<b>9,273,805,613</b>	<b>10,643,674,733</b>	<b>11,518,685,850</b>	<b>11,850,418,749</b>	<b>12,213,827,613</b>
B	Mining and quarrying	231,923,997	243,235,875	279,379,221	342,169,621	448,113,936	445,765,205	424,612,148
C	Manufacturing	2,734,259,469	2,519,157,817	2,488,810,489	2,359,970,976	1,660,571,688	1,192,271,548	1,205,692,928
D	Electricity, gas, steam and air conditioning supply	572,326,850	529,873,561	601,034,241	682,432,100	781,691,498	836,403,073	981,563,900
E	Water supply, sewerage, waste management and remediation activities	435,170,134	424,851,756	426,351,531	465,583,782	473,059,687	417,962,599	358,356,674
F	Construction	5,450,120,097	5,372,347,563	5,478,230,130	6,793,518,254	8,155,249,042	8,958,016,324	9,243,601,964
	<b>Services</b>	<b>26,997,335,477</b>	<b>30,164,904,395</b>	<b>33,216,983,564</b>	<b>35,258,896,880</b>	<b>33,509,127,615</b>	<b>34,415,956,461</b>	<b>36,489,286,430</b>
	Wholesale and retail trade; repair of motors and motorcycles	14,984,578,305	17,533,519,482	19,686,981,603	20,305,112,220	19,392,019,823	20,185,011,585	21,539,285,673
H	Transport and storage	1,798,031,207	1,957,388,169	2,159,896,585	2,389,027,485	2,345,356,008	2,428,776,734	1,977,229,726
I	Accommodation and food service activities	880,731,451	870,969,905	1,033,835,215	1,208,898,668	418,169,016	502,717,291	949,386,844
J	Information and Communication	1,814,468,391	2,321,439,742	2,578,979,628	2,929,043,159	2,977,269,946	3,035,453,589	3,587,535,214
K	Financial and insurance activities	1,184,649,839	1,197,948,775	1,352,323,680	1,453,637,152	1,478,837,929	1,675,751,043	1,881,322,736
L	Real estate activities	1,253,129,684	1,286,269,765	1,323,576,038	1,345,701,010	1,389,894,945	1,404,183,732	1,453,944,289
M	Professional, scientific and technical activities	118,173,873	99,902,543	93,658,565	92,594,944	89,623,648	89,078,522	92,654,160
N	Administrative and support service activities	660,970,982	657,738,327	632,908,122	611,805,298	385,700,163	384,806,616	378,307,005
	Public administration and defense; compulsory social security	1,360,723,521	1,292,970,362	1,428,460,112	1,718,400,630	1,852,264,783	1,963,997,055	2,099,232,103
P	Education	1,343,685,732	1,485,977,023	1,517,796,571	1,717,320,494	1,752,326,373	1,246,426,688	1,161,793,225
Q	Human health and social work activities	370,037,627	337,974,701	355,725,186	455,869,442	597,806,918	648,727,824	546,393,137
R	Arts, entertainment and recreation	357,792,379	366,059,388	363,279,860	380,034,687	241,811,867	263,580,476	296,447,941
S	Other service activities	870,362,486	756,746,213	689,562,399	651,451,691	588,046,197	587,445,306	525,754,379
	<b>GDP basic price (Gross Value Added)</b>	<b>48,206,394,734</b>	<b>50,523,534,872</b>	<b>54,175,926,115</b>	<b>57,574,620,891</b>	<b>57,936,023,617</b>	<b>60,940,240,867</b>	<b>63,911,983,279</b>
	Taxes less subsidies on products (+)	3,526,265,690	3,703,990,634	3,974,901,432	4,194,381,962	4,198,335,086	4,459,880,336	4,696,111,620
	<b>Items</b>							
	<b>Growth rate</b>							
	<b>GDP growth rate</b>	<b>1.9%</b>	<b>4.8%</b>	<b>7.2%</b>	<b>6.2%</b>	<b>0.6%</b>	<b>5.3%</b>	<b>4.9%</b>
	Agriculture	-0.2%	-4.4%	3.7%	-0.1%	10.6%	13.7%	3.6%
	Industry	19.2%	-3.5%	2.0%	14.8%	8.2%	2.9%	3.1%
	Services	-2.1%	11.7%	10.1%	6.1%	-5.0%	2.7%	6.0%
	2022* Provisional data							

Source: Gambia Bureau of Statistics (GBoS)

### 2.1.3 Contribution to GDP estimates, 2013 base year: basic price

Table 2.1.3: Contribution to GDP estimates, 2013 base year: basic price

ISIC Rev.4	Industry	2013	2014	2015	2016	2017	2018	2019	2020	2021	2022*
A	<b>Agriculture, forestry and fishing</b>	<b>28.1</b>	<b>24.4</b>	<b>24.3</b>	<b>23.9</b>	<b>22.7</b>	<b>21.6</b>	<b>21.7</b>	<b>23.1</b>	<b>25.4</b>	<b>25.7</b>
	Crop	16.1	13.2	13.1	12.1	10.1	8.9	7.4	7.8	8.5	9.7
	Livestock	5.4	5.7	5.0	5.0	4.5	4.0	3.8	4.3	4.7	5.7
	Forestry and logging	1.2	1.2	1.1	1.0	0.9	0.8	0.7	0.7	0.6	0.7
	Fishing and aquaculture	5.4	4.3	5.2	5.8	7.2	7.9	9.9	10.2	11.6	9.6
	<b>Industry</b>	<b>12.8</b>	<b>14.3</b>	<b>18.8</b>	<b>22.9</b>	<b>19.4</b>	<b>18.8</b>	<b>18.8</b>	<b>18.3</b>	<b>17.1</b>	<b>16.1</b>
B	Mining and quarrying	0.3	0.6	0.5	0.4	0.5	0.5	0.6	0.6	0.6	0.5
C	Manufacturing	6.0	7.1	7.0	6.1	4.8	4.6	4.1	2.8	2.0	2.0
D	Electricity, gas, steam and air conditioning supply	1.0	1.0	1.1	1.1	0.9	1.6	1.7	1.9	1.7	1.7
E	Water supply, sewerage, waste management and remediation activities	0.7	0.8	0.8	0.8	0.7	0.6	0.6	0.6	0.5	0.4
F	Construction	4.7	4.9	9.4	14.5	12.4	11.5	11.8	12.4	12.3	11.5
	<b>Services</b>	<b>59.1</b>	<b>61.3</b>	<b>56.9</b>	<b>53.3</b>	<b>57.9</b>	<b>59.6</b>	<b>59.5</b>	<b>58.6</b>	<b>57.5</b>	<b>58.2</b>
G	Wholesale and retail trade; repair of motors and motorcycles	33.8	35.3	33.4	30.8	35.4	36.9	36.3	35.6	35.0	35.3
H	Transport and storage	3.8	4.4	3.5	3.5	3.5	3.5	3.5	3.4	3.4	2.6
I	Accommodation and food service activities	2.0	1.9	1.5	1.8	1.8	1.9	2.2	0.8	0.9	2.0
J	Information and Communication	3.8	3.6	3.5	3.1	3.6	3.4	3.5	3.7	3.2	3.3
K	Financial and insurance activities	2.6	2.8	2.4	2.0	2.2	3.3	3.3	3.9	4.0	4.0
L	Real estate activities	2.4	2.4	2.4	2.3	2.2	2.0	1.9	2.2	2.0	2.1
M	Professional, scientific and technical activities	0.2	0.2	0.2	0.2	0.2	0.2	0.1	0.2	0.1	0.1
N	Administrative and support service activities	1.3	1.4	1.3	1.3	1.3	1.1	1.0	0.7	0.6	0.6
O	Public administration and defense; compulsory social security	3.7	3.4	3.2	2.8	2.6	2.7	3.1	3.4	3.4	3.5
P	Education	2.5	2.3	2.2	2.3	2.3	2.1	2.1	2.4	2.6	2.6
Q	Human health and social work activities	1.0	0.9	0.8	0.8	0.7	0.6	0.7	1.0	1.0	1.0
R	Arts, entertainment and recreation	0.5	0.6	0.7	0.7	0.6	0.6	0.6	0.3	0.3	0.4
S	Other service activities	1.5	2.0	1.7	1.7	1.4	1.2	1.1	1.0	0.9	0.7
	<b>GDP basic price (Gross Value Added)</b>	<b>100.0</b>	<b>100.0</b>	<b>100.0</b>	<b>100.0</b>	<b>100.0</b>	<b>100.0</b>	<b>100</b>	<b>100</b>	<b>100.0</b>	<b>100.0</b>
	<i>2022* Provisional data</i>										

Source: Gambia Bureau of Statistics (GBoS)

## 2.1.4 GDP Growth, 2013 base year

Table 2.1.4: GDP Growth, 2013 base year

ISIC Rev.4	Industry	2013	2014	2015	2016	2017	2018	2019	2020	2021	2022*
	<b>Gross Domestic Product (GDP) market price</b>	<b>2.9%</b>	<b>-1.4%</b>	<b>4.1%</b>	<b>1.9%</b>	<b>4.8%</b>	<b>7.2%</b>	<b>6.2%</b>	<b>0.6%</b>	<b>5.3%</b>	<b>4.9%</b>
A	<b>Agriculture, forestry and fishing</b>	<b>-2.6%</b>	<b>-12.4%</b>	<b>4.0%</b>	<b>-0.2%</b>	<b>-4.4%</b>	<b>3.7%</b>	<b>-0.1%</b>	<b>10.6%</b>	<b>13.7%</b>	<b>3.6%</b>
	Crop	-6.8%	-14.0%	5.8%	-2.6%	-18.5%	-2.8%	-14.1%	8.6%	8.7%	7.8%
	Livestock	3.3%	-2.8%	-16.3%	-3.0%	-10.9%	-5.6%	-1.7%	14.6%	6.3%	28.0%
	Forestry and logging	3.4%	-4.2%	1.1%	-16.0%	-11.6%	-18.2%	-24.3%	-2.2%	-4.3%	10.9%
	Fishing and aquaculture	4.0%	-18.9%	22.8%	12.0%	34.4%	19.6%	18.4%	11.7%	20.8%	-6.3%
	<b>Industry</b>	<b>3.6%</b>	<b>9.6%</b>	<b>22.6%</b>	<b>19.2%</b>	<b>-3.5%</b>	<b>2.0%</b>	<b>14.8%</b>	<b>8.2%</b>	<b>2.9%</b>	<b>3.1%</b>
B	Mining and quarrying	7.4%	97.6%	-7.3%	-8.1%	4.9%	14.9%	22.5%	31.0%	-0.5%	-4.7%
C	Manufacturing	3.2%	3.3%	2.6%	-7.0%	-7.9%	-1.2%	-5.2%	-29.6%	-28.2%	1.1%
D	Electricity, gas, steam and air conditioning supply	2.2%	6.0%	10.1%	7.3%	-7.4%	13.4%	13.5%	14.5%	7.0%	17.4%
E	Water supply, sewerage, waste management and remediation activities	2.2%	17.9%	4.5%	8.4%	-2.4%	0.4%	9.2%	1.6%	-11.6%	-14.3%
F	Construction	4.5%	11.5%	54.7%	44.4%	-1.4%	2.0%	24.0%	20.0%	9.8%	3.2%
	<b>Services</b>	<b>5.3%</b>	<b>1.4%</b>	<b>-0.2%</b>	<b>-2.1%</b>	<b>11.7%</b>	<b>10.1%</b>	<b>6.1%</b>	<b>-5.0%</b>	<b>2.7%</b>	<b>6.0%</b>
G	Wholesale and retail trade; repair of motors and motorcycles	2.2%	1.4%	0.3%	-5.4%	17.0%	12.3%	3.1%	-4.5%	4.1%	6.7%
H	Transport and storage	5.3%	9.3%	-16.0%	13.1%	8.9%	10.3%	10.6%	-1.8%	3.6%	-18.6%
I	Accommodation and food service activities	9.0%	-7.6%	-12.9%	20.8%	-1.1%	18.7%	16.9%	-65.4%	20.2%	88.9%
J	Information and Communication	22.9%	-3.5%	9.5%	-2.7%	27.9%	11.1%	13.6%	1.6%	2.0%	18.2%
K	Financial and insurance activities	6.1%	4.7%	2.4%	-7.4%	1.1%	12.9%	7.5%	1.7%	13.3%	12.3%
L	Real estate activities	7.0%	10.7%	1.0%	0.2%	2.6%	2.9%	1.7%	3.3%	1.0%	3.5%
M	Professional, scientific and technical activities	7.0%	3.0%	-1.5%	10.9%	-15.5%	-6.3%	-1.1%	-3.2%	-0.6%	4.0%
N	Administrative and support service activities	7.0%	10.1%	3.1%	-2.0%	-0.5%	-3.8%	-3.3%	-37.0%	-0.2%	-1.7%
O	Public administration and defense; compulsory social security	7.0%	-13.0%	1.9%	-11.1%	-5.0%	10.5%	20.3%	7.8%	6.0%	6.9%
P	Education	13.7%	-3.9%	5.1%	15.0%	10.6%	2.1%	13.1%	2.0%	-28.9%	-6.8%
Q	Human health and social work activities	9.1%	-21.9%	-8.9%	12.5%	-8.7%	5.3%	28.2%	31.1%	8.5%	-15.8%
R	Arts, entertainment and recreation	7.0%	30.5%	23.6%	4.1%	2.3%	-0.8%	4.6%	-36.4%	9.0%	12.5%
S	Other service activities	7.0%	27.3%	-5.4%	1.5%	-13.1%	-8.9%	-5.5%	-9.7%	-0.1%	-10.5%
	<b>GDP basic price (Gross Value Added)</b>	<b>2.7%</b>	<b>-1.5%</b>	<b>4.0%</b>	<b>1.9%</b>	<b>4.8%</b>	<b>7.2%</b>	<b>6.3%</b>	<b>0.6%</b>	<b>5.2%</b>	<b>4.9%</b>
	Taxes less subsidies on products (+)	<b>4.8%</b>	<b>-0.7%</b>	<b>4.2%</b>	<b>2.0%</b>	<b>5.0%</b>	<b>7.3%</b>	<b>5.5%</b>	<b>0.1%</b>	<b>6.2%</b>	<b>5.3%</b>
	<i>2022* Provisional data</i>										

Source: Gambia Bureau of Statistics (GBoS)

## 2.1.5 GDP Deflator, 2013 base year

Table 2.1.5: GDP Deflator, 2013 base year

ISIC Rev.4	Industry	2013	2014	2015	2016	2017	2018	2019	2020	2021	2022*
	<b>Gross Domestic Product (GDP) market price</b>	<b>100</b>	<b>105</b>	<b>115</b>	<b>124</b>	<b>129</b>	<b>138</b>	<b>147</b>	<b>150</b>	<b>161</b>	<b>179</b>
A	<b>Agriculture, forestry and fishing</b>	<b>100</b>	<b>101</b>	<b>110</b>	<b>119</b>	<b>131</b>	<b>137</b>	<b>156</b>	<b>154</b>	<b>170</b>	<b>195</b>
	Crop	100	98	103	109	122	126	139	139	158	197
	Livestock	100	112	134	151	169	181	194	202	233	261
	Forestry and logging	100	105	105	126	144	177	235	242	255	305
	Fishing and aquaculture	100	99	110	122	124	130	154	147	158	165
	<b>Industry</b>	<b>100</b>	<b>105</b>	<b>127</b>	<b>143</b>	<b>138</b>	<b>150</b>	<b>147</b>	<b>137</b>	<b>141</b>	<b>152</b>
B	Mining and quarrying	100	96	97	103	133	132	134	111	122	125
C	Manufacturing	100	117	126	132	124	138	146	147	168	195
D	Electricity, gas, steam and air conditioning supply	100	100	112	112	110	196	206	205	205	204
E	Water supply, sewerage, waste management and remediation activities	100	100	110	110	110	109	109	109	109	120
F	Construction	100	95	134	156	150	155	145	131	134	143
	<b>Services</b>	<b>100</b>	<b>105</b>	<b>110</b>	<b>116</b>	<b>124</b>	<b>133</b>	<b>141</b>	<b>150</b>	<b>164</b>	<b>184</b>
G	Wholesale and retail trade; repair of motors and motorcycles	100	105	113	121	131	139	149	158	170	189
H	Transport and storage	100	110	116	115	117	120	124	126	138	153
I	Accommodation and food service activities	100	105	113	122	133	139	155	166	176	238
J	Information and Communication	100	99	100	100	100	99	99	106	104	105
K	Financial and insurance activities	100	108	99	98	118	181	190	226	234	247
L	Real estate activities	100	93	103	107	111	114	119	138	142	170
M	Professional, scientific and technical activities	100	104	109	115	122	130	124	148	148	158
N	Administrative and support service activities	100	103	105	114	128	130	141	147	161	176
O	Public administration and defense; compulsory social security	100	106	113	121	131	140	150	158	170	190
P	Education	100	100	101	102	101	101	102	118	202	263
Q	Human health and social work activities	100	122	128	131	133	134	137	137	149	208
R	Arts, entertainment and recreation	100	102	104	108	115	124	129	124	127	137
S	Other service activities	100	104	108	115	122	128	140	145	151	164
	<b>GDP basic price (Gross Value Added)</b>	<b>100</b>	<b>104</b>	<b>113</b>	<b>122</b>	<b>128</b>	<b>137</b>	<b>145</b>	<b>148</b>	<b>161</b>	<b>181</b>
	Taxes less subsidies on products (+)	100	122	148	153	145	160	172	177	169	153
	<i>2022* Provisional data</i>										

Source: Gambia Bureau of Statistics (GBoS)

## 2.2 GDP by Expenditure Approach

### 2.2.1 GDP by Expenditure approach at market prices (Millions of Dalasis), 2013 base year

Table 2.2.1: GDP by Expenditure approach at market prices (Millions of Dalasis), 2013 base year

Description	2014	2015	2016	2017	2018	2019	2020	2021
<b>Gross Domestic Product - Production adjusted for ISC F</b>	<b>51,309,079</b>	<b>58,581,062</b>	<b>64,389,939</b>	<b>70,142,188</b>	<b>80,445,800</b>	<b>90,793,764</b>	<b>93,329,809</b>	<b>105,487,038</b>
<b>Total Final Consumption Expenditure</b>	<b>49,390,434</b>	<b>52,715,813</b>	<b>56,295,967</b>	<b>65,856,705</b>	<b>76,683,771</b>	<b>85,935,965</b>	<b>90,281,051</b>	<b>106,167,568</b>
Government	4,534,080	4,877,799	5,438,772	5,517,984	5,490,249	7,484,025	8,392,314	10,293,464
Households	43,587,518	46,488,661	49,376,745	58,810,620	69,621,608	76,710,992	80,031,609	93,708,689
NPISH	1,268,836	1,349,354	1,480,451	1,528,101	1,571,914	1,740,948	1,857,128	2,165,415
<b>Gross Fixed Capital Formation</b>	<b>8,544,303</b>	<b>11,921,137</b>	<b>16,045,930</b>	<b>16,104,457</b>	<b>16,795,815</b>	<b>22,384,152</b>	<b>30,184,778</b>	<b>32,037,247</b>
<b>Total Construction</b>	<b>5,771,315</b>	<b>9,206,551</b>	<b>13,239,794</b>	<b>13,013,278</b>	<b>13,574,940</b>	<b>17,818,259</b>	<b>20,726,894</b>	<b>25,559,266</b>
Construction- Govt.	2,512,375	2,859,541	4,588,769	4,674,374	4,735,754	6,013,074	5,552,007	10,926,074
Construction-Private	3,258,940	6,347,010	8,651,025	8,338,903	8,839,186	11,805,184	15,174,887	14,633,192
<b>Total Capital Goods</b>	<b>1,875,392</b>	<b>1,859,275</b>	<b>1,912,063</b>	<b>2,176,432</b>	<b>2,314,018</b>	<b>3,637,380</b>	<b>8,330,870</b>	<b>5,085,487</b>
Other Capital Assets-Govt.								
Other Capital Assets-Private								
Livestock	897,597	855,310	894,074	914,747	906,857	928,513	1,127,014	1,392,493
<b>Trade Balance</b>	<b>7,482,988</b>	<b>7,838,542</b>	<b>8,114,947</b>	<b>13,167,169</b>	<b>16,279,096</b>	<b>14,223,868</b>	<b>26,300,557</b>	<b>30,447,054</b>
<b>EXPORTS OF G&amp;S</b>	<b>11,204,310</b>	<b>9,121,568</b>	<b>8,213,346</b>	<b>12,962,792</b>	<b>17,929,904</b>	<b>18,309,372</b>	<b>8,966,796</b>	<b>6,980,430</b>
Exports of Goods	5,151,300	4,570,261	3,996,624	6,497,002	7,799,738	7,851,176	3,575,643	1,631,413
Exports of Services	6,053,010	4,551,308	4,216,721	6,465,790	10,130,166	10,458,195	5,391,153	5,349,017
<b>IMPORTS OF G&amp;S</b>	<b>18,687,298</b>	<b>16,960,110</b>	<b>16,328,293</b>	<b>26,129,960</b>	<b>34,209,001</b>	<b>32,533,240</b>	<b>35,267,353</b>	<b>37,427,485</b>
Imports of Goods (FOB)	13,832,237	14,213,354	13,606,362	21,903,910	28,640,176	27,065,936	29,695,626	31,301,401
Imports of Services	4,855,061	2,746,756	2,721,931	4,226,050	5,568,825	5,467,304	5,571,727	6,126,084
<b>Total GDP By Expenditure</b>	<b>50,451,750</b>	<b>56,798,408</b>	<b>64,226,951</b>	<b>68,793,993</b>	<b>77,200,490</b>	<b>94,096,249</b>	<b>94,165,272</b>	<b>107,757,761</b>
<b>Statistical discrepancy (in %)</b>	<b>1.7%</b>	<b>3.0%</b>	<b>0.3%</b>	<b>1.9%</b>	<b>4.0%</b>	<b>-3.6%</b>	<b>-0.9%</b>	<b>-2.2%</b>

Source: Gambia Bureau of Statistics (GBoS)

2.2.2 GDP by Expenditure approach at constant prices (Millions of Dalasis), (2013 base year)

Table 2.2.2: GDP by Expenditure approach at constant prices (Millions of Dalasis), 2013 base year

Description	2014	2015	2016	2017	2018	2019	2020	2021
<b>Gross Domestic Product - Production adjusted for ISC F</b>	<b>48,767,455</b>	<b>50,746,474</b>	<b>51,732,660</b>	<b>54,227,526</b>	<b>58,150,828</b>	<b>61,769,003</b>	<b>62,134,359</b>	<b>65,400,121</b>
<b>Total Final Consumption Expenditure</b>	<b>46,803,991</b>	<b>47,201,376</b>	<b>47,611,023</b>	<b>51,447,763</b>	<b>56,185,013</b>	<b>58,912,755</b>	<b>59,811,434</b>	<b>63,149,358</b>
Government	4,279,533	4,310,478	4,482,198	4,209,296	4,365,522	5,003,525	6,569,650	6,050,536
Households	41,264,220	41,612,963	41,771,451	45,868,791	50,444,343	52,436,870	51,808,997	55,755,893
NPISH	1,260,238	1,277,935	1,357,374	1,369,676	1,375,149	1,472,361	1,432,787	1,342,929
<b>Gross Fixed Capital Formation</b>	<b>7,421,596</b>	<b>9,877,893</b>	<b>13,185,563</b>	<b>13,020,831</b>	<b>13,280,504</b>	<b>17,084,437</b>	<b>24,613,614</b>	<b>22,464,886</b>
<b>Total Construction</b>	<b>5,020,990</b>	<b>7,537,988</b>	<b>10,836,002</b>	<b>10,721,664</b>	<b>11,120,151</b>	<b>13,745,992</b>	<b>16,649,890</b>	<b>18,528,694</b>
Construction- Govt.	2,185,743	2,341,287	3,755,641	3,851,226	3,879,376	4,638,819	4,459,921	7,920,646
Construction-Private	2,835,248	5,196,700	7,080,361	6,870,438	7,240,775	9,107,173	12,189,969	10,608,049
<b>Total Capital Goods</b>	<b>1,592,919</b>	<b>1,647,197</b>	<b>1,748,573</b>	<b>1,740,980</b>	<b>1,660,080</b>	<b>2,862,073</b>	<b>7,485,933</b>	<b>3,345,715</b>
Other Capital Assets-Govt.								
Other Capital Assets-Private								
<b>Livestock</b>	<b>807,686</b>	<b>692,708</b>	<b>600,989</b>	<b>558,187</b>	<b>500,273</b>	<b>476,372</b>	<b>477,792</b>	<b>590,476</b>
<b>Trade Balance</b>	<b>5,768,319</b>	<b>6,998,656</b>	<b>7,835,976</b>	<b>10,592,968</b>	<b>10,992,918</b>	<b>11,827,619</b>	<b>21,506,956</b>	<b>19,018,037</b>
<b>EXPORTS OF G&amp;S</b>	<b>10,406,556</b>	<b>7,965,166</b>	<b>6,960,626</b>	<b>10,515,897</b>	<b>14,143,394</b>	<b>13,247,498</b>	<b>6,631,821</b>	<b>4,830,770</b>
Exports of Goods	4,908,141	4,045,143	3,302,353	4,988,858	5,695,909	5,100,141	2,339,559	939,470
Exports of Services	5,498,415	3,920,023	3,658,274	5,527,039	8,447,485	8,147,357	4,292,262	3,891,301
<b>IMPORTS OF G&amp;S</b>	<b>16,174,875</b>	<b>14,963,822</b>	<b>14,796,603</b>	<b>21,108,864</b>	<b>25,136,312</b>	<b>25,075,117</b>	<b>28,138,777</b>	<b>23,848,807</b>
Imports of Goods (FOB)	11,748,817	12,592,110	12,442,957	17,521,454	20,546,508	20,539,163	23,702,748	19,392,206
Imports of Services	4,426,058	2,371,713	2,353,646	3,587,410	4,589,804	4,535,954	4,436,029	4,456,601
<b>Total GDP By Expenditure</b>	<b>48,457,268</b>	<b>50,080,613</b>	<b>52,960,610</b>	<b>53,875,627</b>	<b>58,472,599</b>	<b>64,169,573</b>	<b>62,918,092</b>	<b>66,596,207</b>
<b>Statistical discrepancy</b>	<b>0.6%</b>	<b>1.3%</b>	<b>-2.4%</b>	<b>0.6%</b>	<b>-0.6%</b>	<b>-3.9%</b>	<b>-1.3%</b>	<b>-1.8%</b>

Source: Gambia Bureau of Statistics (GBoS)



## 2.2.3 Real growth rates of GDP by Expenditure approach

Table 2.2.3: Real growth rates of GDP by Expenditure approach

Description	2013	2014	2015	2016	2017	2018	2019	2020	2021
<b>Gross Domestic Product - Production adjusted for ISC F</b>	<b>2.9</b>	<b>1.4</b>	<b>4.1</b>	<b>1.9</b>	<b>4.8</b>	<b>7.2</b>	<b>6.2</b>	<b>0.6</b>	<b>5.3</b>
<b>Total Final Consumption Expenditure</b>	<b>3.9</b>	<b>0.2</b>	<b>0.8</b>	<b>0.9</b>	<b>8.1</b>	<b>9.2</b>	<b>4.9</b>	<b>1.5</b>	<b>5.6</b>
Government	5.4	6.7	0.7	4.0	6.1	3.7	14.6	31.3	7.9
Households	3.6	0.3	0.8	0.4	9.8	10.0	3.9	1.2	7.6
NPISH	9.3	6.3	1.4	6.2	0.9	0.4	7.1	2.7	6.3
<b>Gross Fixed Capital Formation</b>	<b>4.5</b>	<b>2.0</b>	<b>33.1</b>	<b>33.5</b>	<b>1.2</b>	<b>2.0</b>	<b>28.6</b>	<b>44.1</b>	<b>8.7</b>
<b>Total Construction</b>	<b>4.5</b>	<b>10.2</b>	<b>50.1</b>	<b>43.8</b>	<b>1.1</b>	<b>3.7</b>	<b>23.6</b>	<b>21.1</b>	<b>11.3</b>
Construction- Govt.		12.9	7.1	60.4	2.5	0.7	19.6	3.9	77.6
Construction-Private		38.4	83.3	36.2	3.0	5.4	25.8	33.9	13.0
<b>Total Capital Goods</b>	<b>6.3</b>	<b>13.2</b>	<b>3.4</b>	<b>6.2</b>	<b>0.4</b>	<b>4.6</b>	<b>72.4</b>	<b>161.6</b>	<b>55.3</b>
Other Capital Assets-Govt.									
Other Capital Assets-Private									
<b>Livestock</b>	<b>37.3</b>	<b>8.7</b>	<b>14.2</b>	<b>13.2</b>	<b>7.1</b>	<b>10.4</b>	<b>4.8</b>	<b>0.3</b>	<b>23.6</b>
<b>Trade Balance</b>	<b>17.8</b>	<b>55.4</b>	<b>21.3</b>	<b>12.0</b>	<b>35.2</b>	<b>3.8</b>	<b>7.6</b>	<b>81.8</b>	<b>11.6</b>
<b>EXPORTS OF G&amp;S</b>	<b>4.0</b>	<b>10.9</b>	<b>23.5</b>	<b>12.6</b>	<b>51.1</b>	<b>34.5</b>	<b>6.3</b>	<b>49.9</b>	<b>27.2</b>
Exports of Goods	11.0	3.7	17.6	18.4	51.1	14.2	10.5	54.1	59.8
Exports of Services	15.5	18.1	28.7	6.7	51.1	52.8	3.6	47.3	9.3
<b>IMPORTS OF G&amp;S</b>	<b>8.3</b>	<b>23.5</b>	<b>7.5</b>	<b>1.1</b>	<b>42.7</b>	<b>19.1</b>	<b>0.2</b>	<b>12.2</b>	<b>15.2</b>
Imports of Goods (FOB)	8.9	9.2	7.2	1.2	40.8	17.3	0.0	15.4	18.2
Imports of Services	5.9	88.8	46.4	0.8	52.4	27.9	1.2	2.2	0.5
<b>Total GDP By Expenditure</b>	<b>6.1</b>	<b>4.0</b>	<b>3.4</b>	<b>5.8</b>	<b>1.7</b>	<b>8.5</b>	<b>9.7</b>	<b>2.0</b>	<b>5.8</b>

Source: Gambia Bureau of Statistics (GBoS)

INDICATOR	Jan-22	Feb-22	Mar-22	Apr-22	May-22	Jun-22	Jul-22	Aug-22	Sep-22	Oct-22	Nov-22	Dec-22
-----------	--------	--------	--------	--------	--------	--------	--------	--------	--------	--------	--------	--------



## 2.4 Depository Corporations Survey – Summary Account of Deposit Money Banks

Table 2.4.1: Depository Corporations Survey – Summary Account of Deposit Money Banks

INDICATOR	Units	Jan 22	Feb 22	Mar 22	Apr 22	May 22	Jun 22	Jul 22	Aug 22	Sep 22	Oct 22	Nov 22	Dec 22
Scale		Millions	Millions	Millions	Millions	Millions	Millions	Millions	Millions	Millions	Millions	Millions	Millions
<b>NET FOREIGN ASSETS</b>	<b>Gambian</b>												
	<b>Dalasi</b>	10928.9583	10045.3663	10836.1263	10650.8193	10745.6773	9655.3853	8663.096	8107.296	8754.21912	11108.04903	10734.79169	12332.76
	<b>Gambian</b>												
<b>Foreign assets</b>	<b>Dalasi</b>	13139.5243	12784.1183	13819.3543	14146.6093	14091.3263	12597.4363	11504.486	10769.491	11755.88612	13854.57803	13409.13469	13830.59
	<b>Gambian</b>												
<b>Foreign liabilities</b>	<b>Dalasi</b>	2210.566	2738.752	2983.228	3495.79	3345.649	2942.051	2841.39	2662.195	3001.667	2746.529	2674.343	1497.83
	<b>Gambian</b>												
<b>NET DOMESTIC ASSETS</b>	<b>Dalasi</b>	39555.4707	40723.2667	42376.4637	41965.8517	41631.9197	42578.0927	44124.584	44859.906	44636.82788	43090.86197	42007.19431	41694.328
	<b>Gambian</b>												
<b>Domestic credit</b>	<b>Dalasi</b>	34317.666	35126.803	36965.002	37600.028	37350.186	38201.828	39270.44	39992.725	41326.404	40678.182	39879.362	39811.182
<b>Claims on government (net)</b>	<b>Gambian</b>												
	<b>Dalasi</b>	24622.407	24963.258	25728.704	25530.372	25514.488	25576.646	26139.656	26466.29	27461.42	26832.454	25834.677	25342.292
	<b>Gambian</b>												
<b>Gross claims</b>	<b>Dalasi</b>	24622.407	24963.258	25728.704	25530.372	25514.488	25576.646	26139.656	26466.29	27461.42	26832.454	25834.677	25342.292
	<b>Gambian</b>												
<b>Government bonds</b>	<b>Dalasi</b>	8153.977	8166.526	9626.693	9615.312	9626.188	9841.836	9797.686	9818.58	10850.01	10530.644	10805.437	10807.022
	<b>Gambian</b>												
<b>Treasury bills</b>	<b>Dalasi</b>	16468.43	16796.732	16102.011	15915.06	15888.3	15734.81	16341.97	16647.71	16611.41	16301.81	15029.24	14535.27
	<b>Gambian</b>												
<b>Government deposits</b>	<b>Dalasi</b>	0	0	0	0	0	0	0	0	0	0	0	0
<b>Claims on public enterprises</b>	<b>Gambian</b>												
	<b>Dalasi</b>	198.568	368.552	2550.365	2566.821	2606.86	3156.74	3006.563	2945.712	2955.881	2709.377	2704.305	2868.204
	<b>Gambian</b>												
<b>Claims on private sector</b>	<b>Dalasi</b>	9496.691	9794.993	8685.933	9502.835	9228.838	9468.442	10124.221	10580.723	10909.103	11136.351	11340.38	11600.686
	<b>Gambian</b>												
<b>Reserves</b>	<b>Dalasi</b>	10968.57336	11261.31741	11038.10985	10028.46696	10492.66324	10460.47	11077.022	10790.054	9482.08	8299.737	8324.541	8037.758
	<b>Gambian</b>												
<b>Currency</b>	<b>Dalasi</b>	1009.246	1296.093	1194.363	1091.553	1304.823	1208.49	1351.572	1314.074	1046.06	1070.937	1024.871	1137.278
	<b>Gambian</b>												
<b>Deposits at central bank</b>	<b>Dalasi</b>	9959.327355	9965.224409	8823.746849	8936.913965	8377.840243	8311.98	9725.45	9475.98	8436.02	7228.8	7299.67	6900.48
	<b>Gambian</b>												
<b>Net claims on CBG</b>	<b>Dalasi</b>	0	0	1020	0	810	940	0	0	0	0	0	0
	<b>Gambian</b>												
<b>CBG bills held by DMBs</b>	<b>Dalasi</b>	0	0	1020	0	810	940	0	0	0	0	0	0
	<b>Gambian</b>												
<b>Credit from CBG</b>	<b>Dalasi</b>	0	0	0	0	0	0	0	0	0	0	0	0
	<b>Gambian</b>	-	-	-	-	-	-	-	-	-	-	-	-
<b>Other items (net)</b>	<b>Dalasi</b>	5730.768655	5664.853709	6646.648149	5662.643265	7020.929543	-7024.2053	-6222.878	-5922.873	-6171.65612	-5887.05703	-6196.70869	-6154.612

<b>Net claims on other DMB</b>	<b>Gambian Dalasi</b>	232.799	532.729	901.213	996.547	589.134	489.128	292.796	282.719	597.764	618.798	546.098	408.114
<b>of which: Capital account</b>	<b>Gambian Dalasi</b>	-7605.561	-7762.88	-7909.207	-8045.664	-7911.272	-7809.81	-7952.365	-8134.294	-8271.118	-8304.464	-8420.801	-8586.058
<b>Total deposit liabilities</b>	<b>Gambian Dalasi</b>	50484.429	50768.633	53212.59	52616.671	52377.597	52233.478	52787.68	52967.202	53391.047	54198.911	52741.986	54027.088
<b>Demand deposits</b>	<b>Gambian Dalasi</b>	24023.884	23706.785	25583.682	24708.247	24520.375	25226.698	25602.622	25298.091	25648.149	26029	23899.651	25432.619
<b>Savings deposits</b>	<b>Gambian Dalasi</b>	21898.094	22443.915	22887.506	22999.629	22778.975	22640.411	22450.246	22949.695	23091.956	23348.549	23991.761	23603.904
<b>Time deposits</b>	<b>Gambian Dalasi</b>	4562.451	4617.933	4741.402	4908.795	5078.247	4366.369	4734.812	4719.416	4650.942	4821.362	4850.574	4990.565

Source: Central Bank of The Gambia (CBG)

## 2.5 Official Reserve Assets (Monthly)

Table 2.5.1: Official Reserve Assets

INDICATOR	Scale	Dec-21	Jan-22	Feb-22	Mar-22	Apr-22	May-22	Jun-22	Jul-22	Aug-22	Sep-22	Oct-22	Nov-22	Dec-22
<b>International Liquidity, Total Reserves excluding Gold, US Dollars</b>	<b>Millions</b>	652.6709	641.3379	635.5186	628.6178	587.4322	569.0432	595.6611	585.6781	564.6762	538.1314	505.9321	512.3407	568.2415
<b>International Liquidity, Total Reserves excluding Gold, SDR Holdings, US Dollars</b>	<b>Millions</b>	86.65971	86.17595	85.25436	85.59056	83.23008	83.337	80.74474	80.49054	79.08008	77.77599	76.98546	78.55344	79.49727
<b>International Liquidity, Total Reserves excluding Gold, Reserve Position in the Fund, US Dollars</b>	<b>Millions</b>	13.08378	13.01074	12.8723	12.92306	12.56689	12.61737	12.41245	12.37338	12.16529	11.96467	11.99655	12.29298	12.44069
<b>International Liquidity, Total Reserves excluding Gold, Foreign Exchange, US Dollars</b>	<b>Millions</b>	552.9274	542.1512	537.392	530.1042	491.6352	473.0888	502.5039	492.8142	473.4308	448.3907	416.9501	421.4943	476.3035

Source: Central Bank of The Gambia (CBG)

## 2.6 Exchange Rates

Table 2.6.1: Exchange Rates

INDICATOR	Units	Dec-21	Jan-22	Feb-22	Mar-22	Apr-22	May-22	Jun-22	Jul-22	Aug-22	Sep-22	Oct-22	Nov-22	Dec-22
Gambian Dalasi per GB Pound Sterling, Period Average	Rate	69.807	70.638	70.907	70.438	69.842	67.804	67.0397	66.043	66.196	65.728	65.235	69.448	73.183
Gambian Dalasi per US Dollar, Period Average	Rate	52.61	52.584	52.768	53.052	53.046	53.464	53.6551	53.869	54.11	54.857	57.109	59.725	60.844
Gambian Dalasi per US Dollar, End of Period	Rate	52.61	52.52	52.91	52.98	53.49	53.6	53.71	54.07	54.74	56.13	58.86	60.97	60.81
Gambian Dalasi per Euro, Period Average	Rate	60.52	60.069	60.128	60.241	59.902	58.756	57.8722	57.245	56.805	57.452	58.198	61.576	63.93
Gambian Dalasi per Euro, End of Period	Rate	60.57	59.94	60.57	59.96	59.02	58.01	57.83	56.59	56.67	58.13	58.96	62.52	64.05
Gambian Dalasi per Swiss Franc, Period Average	Rate	56.092	55.308	55.623	55.439	55.534	54.746	55.3811	54.808	55.137	56.169	56.524	58.363	61
Gambian Dalasi per 100 Swedish Kroner, Period Average	Rate	578.45	578.45	578.45	569.01	544.12	564.24	538.442	529.04	529.22	527.04	524.84	550.15	585.23
Gambian Dalasi per 5000 Franc CFA, Period Average	Rate	454.85	556.86	552.15	460.1	456.96	456.86	448.294	451.34	445.5	434.74	439.31	441.97	459.65
Gambian Dalasi per Swiss Franc, End of Period	Rate	55.95	55.6	55.33	55.73	55.57	55.57	55.5	55.7	56.72	56.86	56.98	59.61	62.67
Gambian Dalasi per 100 Swedish Kroner, End of Period	Rate	552.06	538.13	564.99	537.59	538.69	536.01	532.05	522.35	527.92	506.15	529.95	532.49	596.31
Gambian Dalasi per 5000 Franc CFA, End of Period	Rate	478.14	459.9	460.41	458.5	459.53	456.33	450.01	434.65	434.28	416.92	439.14	446.49	456.51
Gambian Dalasi per GB Pound Sterling, End of Period	Rate	70.07	70.19	68.28	70.47	68.34	67.98	67.02	65.79	65.2	62.58	66.81	69.04	73.45

Source: Central Bank of The Gambia (CBG)

## 2.7 Interest Rates

Table 2.7.1: Interest rates

Time	Units	Sep-21	Oct-21	Nov-21	Dec-21	Jan-22	Feb-22	Mar-22	Apr-22	May-22	Jun-22	Jul-22	Aug-22
Discount on T Bills (T-Bill Rate)	Percent per Annum	1.538	2.435	1.19	1.554	2.77	1.3175	2.25	1.6875	2.505	5.314	7.5925	4.986
Rediscount on T Bills (Policy; Eop)	Percent per Annum	10	10	10	10	10	10	10	10	11	11	11	11
Min Rate for Industry	Percent per Annum	10	10	10	10	10	10	10	10	10	10	10	10
Max Rate Industrial Credit	Percent per Annum	19	19	19	19	19	19	19	19	19	19	19	19
Min Rate for Building	Percent per Annum	10	10	10	10	10	10	10	10	10	10	10	10
Max Rate for Building	Percent per Annum	19	19	19	19	19	19	19	19	19	19	19	19
Min Rate for Trade	Percent per Annum	10	10	10	10	10	10	10	10	10	10	10	10
Max Rate Trade Credit	Percent per Annum	19	19	19	19	19	19	19	19	19	19	19	19
Min Rate for Other	Percent per Annum	10	10	10	10	10	10	10	10	10	10	10	10
Max Rate Other Sectors	Percent per Annum	19	19	19	19	19	19	19	19	19	19	19	19
Min Savings Bank Rate	Percent per Annum	0.25	0.25	0.25	0.25	0.25	0.25	0.2	0.2	0.2	0.2	0.2	0.2
Max Savings Bank Rate	Percent per Annum	2.75	2.75	2.75	2.75	2.75	2.75	3	3	3	3	3	3
Max 3 Months Deposits	Percent per Annum	4.8	4.8	4.8	4.8	4.8	4.8	5	5	4.8	4.8	4.8	4.8
Short Term Account	Percent per Annum	2.5	2.5	2.5	2.5	2.5	2.5	1.5	1.5	1.5	1.5	1.5	1.5
Min 3 Months Deposits	Percent per Annum	0.24	0.01	0.15	0.15	0.15	0.15	0.15	0.15	0.15	0.15	0.15	0.15
Min 6 Months Deposits	Percent per Annum	0.06	0.19	0.25	0.25	0.25	0.25	0.25	0.25	0.25	0.25	0.25	0.25
Max 6 Months Deposits	Percent per Annum	5.45	5.45	5.45	5.45	5.45	5.45	6	6	5.45	5.45	5.45	5.45
Min 9 Months Deposits	Percent per Annum	0.14	0.25	0.25	0.25	0.25	0.25	0.25	0.25	0.25	0.25	0.25	0.25
Max 9 Months Deposits	Percent per Annum	5	5	5	5	5	5	6	6	5	5	5	5
Min 12 Months Deposits	Percent per Annum	0.04	0.09	0.25	0.1	0.1	0.1	0.1	0.1	0.1	0.25	0.25	0.25
Max 12 Months Deposits	Percent per Annum	8	8	8	8	8	8	10	10	8	8	8	8
Sukuk Al Salam 3 Months Deposits	Percent per Annum	2.448	1.4375	0.54	1.3	3.2625	3.9125	0.942	1.7575	2.93	2.324	2.03	4.05
Sukuk Al Salam 6 Months Deposits	Percent per Annum	1.87	2.90575	3.0775	1.74	4.3575	3.6825	1.852	1.705	2.28	1.58	2.665	5.68
Sukuk Al Salam 12 Months Deposits	Percent per Annum	2.1	3.34	2.0725	2.454	2.66	4.1275	4.08	3.2925	1.7125	1.614	2.4975	5.462

Source: Central Bank of The Gambia (CBG)

## 2.8 Distribution of Outstanding Treasury Bills (In millions)

Table 2.8.1: Distribution of Outstanding Treasury Bills (In millions)

INDICATOR	Units	Nov 21	Dec 21	Jan 22	Feb 22	Mar 22	Apr 22	May 22	Jun 22	Jul 22	Aug 22	Sep 22	Oct 22	Nov 22	Dec 22
Treasury Bills, Total	Gambian														
Treasury Bills, Total	Dalasi	19399.09	19372.319	19449.93	19611.505	18750.775	18348.97	18331.07	18225.79	18863.483	19351.41	19316.635	19030	17934.44	17831.35
Treasury Bills, Total	Gambian														
Banks	Dalasi	16147.03	16360.978	16591.78	16846.315	16102.011	15915.06	15888.3	15734.81	16341.97	16647.71	16611.41	16301.81	15029.24	14535.27
Treasury Bills, Central	Gambian														
Bank	Dalasi	0	144.864	123.35	49.575	0	0	0	0	0	0	0	0	0	0
Treasury Bills,	Gambian														
Commercial Banks	Dalasi	16147.03	16216.114	16468.43	16796.74	16102.011	15915.06	15888.3	15734.81	16341.97	16647.71	16611.41	16301.81	15029.24	14535.27
Treasury Bills, Total Non-	Gambian														
Bank Entities	Dalasi	3252.06	3011.341	2858.15	2765.19	2648.764	2433.91	2442.77	2490.98	2521.513	2703.7	2705.225	2728.19	2905.2	3296.08
Treasury Bills, Public	Gambian														
Non-Bank Entities	Dalasi	0	0	0	0	0	0	0	0	0	0	0	0	0	0
Treasury Bills, Private	Gambian														
Non-Bank Entities	Dalasi	3252.06	3011.341	2858.15	2765.19	2648.764	2433.91	2442.77	2490.98	2521.513	2703.7	2705.225	2728.19	2905.2	3296.08

Source: Central Bank of The Gambia (CBG)

## 2.9 Labour Statistics

### 2.9.1 Main labour force and labour underutilization (LU) indicators (%), GLFS 2022-2023 – Main job

Table 2.9.1: Main labour force and labour underutilization (LU) indicators (%), GLFS 2022-2023 – Main job

	Sex		Residence		Local government area					Functional difficulty			Age (yrs.)		Subsistence agriculture		Total		
	Male	Female	Urban	Rural	Banjul	Kanifing	Brikama	Mansakonko	Kerewan	Kuntaur	Janjanbureh	Basse	With functional difficulty	Without functional difficulty	Youth (15–35)	Adult (36+)		Participate in subsistence agriculture	Not Participate in subsistence agriculture
Population 15 years and older	674,112	723,109	859,653	537,568	16,953	251,712	646,944	50,525	142,141	64,902	76,891	147,153	59,508	1,337,713	897,406	499,815	146,891	1,250,330	1,397,221
Labour force	323,204	286,206	381,200	228,210	8,768	122,726	277,194	22,953	73,125	22,646	34,772	47,226	19,544	589,866	342,118	267,292	60,687	548,723	609,410
-Employed	297,926	265,469	345,408	217,987	7,914	108,474	254,337	22,022	70,391	21,743	33,682	44,831	18,132	545,263	306,262	257,133	54,841	508,554	563,395
-Unemployed	25,278	20,737	35,792	10,223	854	14,252	22,857	931	2,734	903	1,090	2,395	1,412	44,603	35,856	10,159	5,846	40,169	46,015
Outside the labour force	350,907	436,904	478,454	309,357	8,185	128,986	369,750	27,572	69,016	42,256	42,120	99,926	39,964	747,847	555,289	232,522	86,204	701,607	787,811
Labour underutilization	126,266	162,004	172,569	169,521	2,826	54,842	134,484	15,050	39,383	24,748	23,578	47,180	6,609	332,736	242,486	99,604	71,714	270,376	342,090
-Unemployed	25,278	20,737	35,792	10,223	854	14,252	22,857	931	2,734	903	1,090	2,395	1,412	44,603	35,856	10,159	5,846	40,169	46,015
Time-related underemployed	27,514	53,820	40,981	40,353	691	11,460	35,635	5,115	11,152	4,174	6,225	6,881	2,745	78,589	49,942	31,392	11,892	69,442	81,334
-Potential labour force	73,474	141,267	95,796	118,945	1,281	29,130	75,992	9,004	25,497	19,671	16,263	37,904	5,197	209,544	156,688	58,053	53,976	160,765	214,741
Labour force participation rate (%)	47.9	39.6	62.6	37.4	51.7	48.8	42.8	45.4	51.4	34.9	45.2	32.1	32.8	44.1	38.1	53.5	41.3	43.9	43.6
Employment-to-population ratio (%)	44.2	36.7	40.2	40.6	46.7	43.1	39.3	43.6	49.5	33.5	43.8	30.5	30.5	40.8	34.1	51.4	37.3	40.7	40.3
Time related underemployment rate (%)	8.5	18.8	10.8	17.7	7.9	9.3	12.9	22.3	15.3	18.4	17.9	14.6	14.0	13.3	14.6	11.7	19.6	12.7	13.3
LU1: Unemployment rate (%)	7.8	7.2	9.4	4.5	9.7	11.6	8.2	4.1	3.7	4.0	3.1	5.1	7.2	7.6	10.5	3.8	9.6	7.3	7.6
LU2: Combined rate of time-related underemployment and	16.3	26.1	20.1	22.2	17.6	21.0	21.1	26.3	19.0	22.4	21.0	19.6	21.3	20.9	25.1	15.5	29.2	20.0	20.9



unemployment (%)																			
LU3: Combined rate of unemployment and potential labour force (%)	24.9	37.9	27.6	37.2	21.2	28.6	28.0	31.1	28.6	48.6	34.0	47.3	26.7	31.8	38.6	21.0	52.2	28.3	31.6
LU4: Composite measure of labour underutilization (%)	31.8	50.5	36.2	48.8	28.1	36.1	38.1	47.1	39.9	58.5	46.2	55.4	37.8	41.6	48.6	30.6	62.5	38.1	41.5

Source: Gambia Bureau of Statistics, Integrated Household Survey, 2020

## 2.9.2 Youth (15-35) Key Labour Market Indicators by sex, residence and local government area

Table 2.9.2: Youth (15-35) Key Labour Market Indicators by sex, residence and local government area

Sex	Residence	Local government area
-----	-----------	-----------------------

	Male	Female	Urban	Rural	Banjul	Kanifing	Brikama	Mansakonko	Kerewan	Kuntaur	Janjanbureh	Basse	Total
Population (15-35)	428,011	469,395	565,269	332,137	10,116	159,770	430,329	30,222	88,024	41,025	46,229	91,690	897,406*
Labour force	178,923	163,195	216,937	125,181	4,343	69,109	160,323	11,739	40,852	12,109	17,916	25,727	342,118
Employed	160,170	146,092	188,325	117,937	3,666	57,693	141,881	11,131	38,865	11,586	17,206	24,234	306,262
Unemployed	18,753	17,103	28,612	7,244	677	11,416	18,442	608	1,987	523	710	1,493	35,856
Outside the labour force	249,089	306,200	348,333	206,956	5,772	90,662	270,006	18,484	47,172	28,917	28,312	65,964	555,289
Labour underutilization	90,161	152,324	129,755	112,730	1,916	41,217	102,752	9,604	27,146	16,024	14,912	28,913	242,485
Unemployed	18,753	17,103	28,612	7,244	677	11,416	18,442	608	1,987	523	710	1,493	35,856
Time-related underemployed	16,583	33,358	25,247	24,694	382	6,993	23,249	2,823	6,848	2,588	3,459	3,599	49,941
Potential labour force	54,825	101,863	75,896	80,792	857	22,808	61,061	6,173	18,311	12,913	10,743	23,821	156,688
Discouraged job-seekers	25,566	43,075	28,827	39,814	155	8,961	21,906	3,285	8,265	5,530	8,323	12,216	68,640
Discouraged job-seekers (%)	10.3	14.1	8.3	19.2	2.7	9.9	8.1	17.8	17.5	19.1	29.4	18.5	12.4
Employees	86,175	36,447	88,254	34,369	1,909	29,587	63,273	2,579	9,633	3,475	5,189	6,979	122,623
Self-employed	73,899	109,333	100,011	83,222	1,757	28,106	78,491	8,527	29,170	8,095	11,911	17,174	183,233
EET	184,456	221,976	248,354	158,078	4,220	64,054	194,445	13,603	35,025	24,223	21,043	49,819	406,432
Employees (%)	53.8	24.9	46.9	29.1	52.1	51.3	44.6	23.2	24.8	30.0	30.2	28.8	40.0
Self-employed (%)	46.1	74.8	53.1	70.6	47.9	48.7	55.3	76.6	75.1	69.9	69.2	70.9	59.8
EET (%)	43.1	47.3	43.9	47.6	41.7	40.1	45.2	45	39.8	59	45.5	54.3	45.3
Labour force participation rate	41.8	34.8	38.4	37.7	42.9	43.3	37.3	38.8	46.4	29.5	38.8	28.1	38.1
Employment-to-population ratio	37.4	31.1	33.3	35.5	36.2	36.1	33.0	36.8	44.2	28.2	37.2	26.4	34.1
Time related underemployment rate (%)	9.3	20.4	11.6	19.7	8.8	10.1	14.5	24.0	16.8	21.4	19.3	14.0	14.6
J1: Unemployment rate (%)	10.5	10.5	13.2	5.8	15.6	16.5	11.5	5.2	4.9	4.3	4.0	5.8	10.5
J2: Combined rate of time-related underemployment and unemployment (%)	19.7	30.9	24.8	25.5	24.4	26.6	26.0	29.2	21.6	25.7	23.3	19.8	25.1
J3: Combined rate of unemployment and potential labour force (%)	31.5	44.9	35.7	42.7	29.5	37.2	35.9	37.9	34.3	53.7	40.0	51.1	38.6
J4: Composite measure of labour underutilization (%)	38.6	57.5	44.3	54.7	36.9	44.8	46.4	53.6	45.9	64.0	52.0	58.4	48.6

Source: Gambia Bureau of Statistics, Integrated Household Survey, 2020

### 2.9.3 Employed persons by branch of economic activity in main job

Branch of economic activity (main job)	Persons with informal		Persons with formal		Total	Percent

	employment	employment		
Agriculture, forestry and fishing	114,159	4,261	118,420	21.0
Mining and quarrying	3,743	*1,192	4,936	0.9
Manufacturing	41,917	9,600	51,517	9.1
Electricity, gas, steam and air con	*433	*822	1,254	0.2
Water supply; sewerage, waste management	*682	*271	953	0.2
Construction	57,518	2,994	60,511	10.7
Wholesale and retail trade; repair of motor vehicles, motorcycles	119,945	27,943	147,887	26.2
Transportation and storage	22,588	9,074	31,662	5.6
Accommodation and food service activities	28,879	4,780	33,659	6.0
Information and communication	(2,686)	(2,395)	5,082	0.9
Financial and insurance activities	(2,246)	(3,172)	5,417	1.0
Real estate activities	*647	*527	1,174	0.2
Professional, scientific and technical activities	3,695	4,488	8,183	1.5
Administrative and support service	8,525	8,768	17,293	3.1
Public administration and defense;	(1,816)	10,445	12,261	2.2
Education	9,546	16,221	25,767	4.6
Human health and social work activities	2,471	4,837	7,308	1.3
Arts, entertainment and recreation	2,320	*838	3,158	0.6
Other service activities	15,437	(2,583)	18,020	3.2
Activities of households as employers	7,506	*578	8,084	1.4
Activities of extraterritorial organisations and bodies	*70	*121	191	0.0
<b>Total</b>	<b>447,487</b>	<b>115,908</b>	<b>563,395</b>	<b>100.0</b>

*Table 2.9.3: Employed persons by branch of economic activity in main job*

Source: Gambia Bureau of Statistics, Integrated Household Survey, 2020

#### 2.9.4 Discouraged jobseekers by sex, residence, LGA, disability and age

Characteristics	Number	Per cent
-----------------	--------	----------

	Male	33,930	9.7
<b>Sex</b>	Female	59,356	13.6
	Urban	34,962	7.3
<b>Residence</b>	Rural	58,323	18.9
	Banjul	241	2.9
	Kanifing	11,004	8.5
	Brikama	26,922	7.3
<b>LGA</b>	Mansakonko	4,837	17.5
	Kerewan	11,205	16.2
	Kuntaur	7,846	18.6
	Janjanbureh	12,476	29.6
	Basse	18,754	18.8
	With functional difficulty	1,840	4.6
<b>Disability</b>	Without functional difficulty	91,445	12.2
	Youth (15-35 yrs.)	68,640	12.4
<b>Age</b>	Adult (36+ yrs.)	24,645	10.6
<b>Total</b>		<b>93,285</b>	<b>11.8</b>

*Table 2.9.4: Discouraged jobseekers by sex, residence, LGA, disability and age*

Source: Gambia Bureau of Statistics, Integrated Household Survey, 2020

## 2.9.5 Child labour

Children aged5-11 in child	Children aged12-14 in child	Children aged 5-14 in child	Children aged15-17 in child	Total childlabour
----------------------------	-----------------------------	-----------------------------	-----------------------------	-------------------

	labour		labour		labour		labour		5-17 years		
	%	No.	%	No.	%	No.	%	No.	%	No.	
<b>Sex</b>	Male	18.8	46,108	30.0	30,240	22.0	76,348	29.7	25,162	23.5	101,510
	Female	18.6	43,118	28.2	26,041	21.3	69,159	27.3	23,451	22.6	92,610
<b>Residence</b>	Urban	6.6	16,503	13.7	15,044	8.8	31,547	16.2	16,477	10.4	48,024
	Rural	32.1	72,723	49.2	41,237	36.7	113,960	46.7	32,136	38.5	146,096
<b>LGA</b>	Banjul	*0.5	19	*0.7	11	0.5	30	*3.2	57	1.1	87
	Kanifing	(3.5)	2,209	(9.7)	2,666	5.4	4,875	14.6	3,849	7.5	8,724
	Brikama	12.8	26,456	16.2	13,490	13.8	39,946	16.7	13,164	14.4	53,110
	Mansakonko	41.8	8,691	53.4	4,507	45.2	13,198	59.0	3,938	47.7	17,136
	Kerewan	20.8	12,210	44.3	11,153	27.9	23,363	42.3	8,233	30.6	31,595
	Kuntaur	36.6	11,089	62.4	6,435	43.1	17,523	61.4	5,236	46.3	22,760
<b>LGA</b>	Janjanbureh	39.3	12,887	55.9	6,975	43.9	19,862	54.8	5,236	45.8	25,098
	Basse	25.6	15,666	44.9	11,045	31.2	26,711	45.8	8,899	33.9	35,610
<b>TOTAL</b>	<b>18.7</b>	<b>89,226</b>	<b>29.1</b>	<b>56,281</b>	<b>21.7</b>	<b>145,507</b>	<b>28.5</b>	<b>48,613</b>	<b>23.1</b>	<b>194,120</b>	

Table 2.9.5: Percentage distribution of children in child labour, by age group, sex, residence and LGA

Source: Gambia Bureau of Statistics, Integrated Household Survey, 2020

## Chapter 3 International Merchandise Trade statistics

### 3.1 Annual Trade Summary Statistics from 2007-2022 (in '000' GMD)

Table 3.1.1: Annual Trade Summary Statistics from 2007-2022 (in '000' GMD)

Year	Imports	Exports	Re-Exports	Total Export	Total Trade	Trade Balance
2007	7,945,367	287,981	44,790	332,770	8,278,138	-7,612,597
2008	7,098,069	226,797	73,305	300,102	7,398,171	-6,797,967
2009	8,084,622	669,026	1,086,141	1,755,167	9,839,789	-6,329,455
2010	7,930,693	927,081	980,519	1,907,600	9,838,293	-6,023,093
2011	10,051,043	323,788	2,465,996	2,789,784	12,840,828	-7,261,259
2012	12,158,600	587,804	3,206,142	3,793,946	15,952,546	-8,364,653
2013	12,550,253	413,409	3,393,833	3,807,241	16,357,494	-8,743,012
2014	16,140,200	669,632	3,638,552	4,308,183	20,448,383	-11,832,017
2015	16,640,430	814,775	2,929,893	3,744,668	20,385,098	-12,895,763
2016	15,898,749	744,428	3,179,193	3,923,621	19,822,370	-11,975,128
2017	25,678,051	639,284	403,587	1,042,871	26,720,923	-24,635,180
2018	32,621,590	225,018	403,141	628,159	33,249,749	-31,993,431
2019	31,076,150	451,891	1,121,193	1,573,084	32,649,234	-29,503,066
2020	34,913,753	261,188	1,175,122	1,436,310	36,350,063	-33,477,443
2021	36,521,225	567,330	792,676	1,360,006	37,881,231	-35,161,219
2022	44,888,775	1,289,703	1,738,182	3,027,885	47,916,659	-41,860,890

Source: Gambia Bureau of Statistics

Note: trade balance is total exports minus imports (TE-IM)

Total trade is total exports plus imports (TE+IM)

Total export is export plus re-exports (E+R)

### 3.2 Monthly Trade Summary by Trade Flow from 2019-2022 (in '000' GMD)

Table 3.2.1: Monthly Trade Summary by Trade Flow from 2019-2022 (in '000' GMD)

Year	2019			2020			2021			2022		
Month	Imports	Exports	Re-Exports	Imports	Exports	Re-Exports	Imports	Exports	Re-Exports	Imports	Exports	Re-Exports
January	2,488,667	35,737	96,819	6,644,619	20,402	41,004	2,472,429	89,375	90,383	3,288,580	31,342	748,792
February	2,626,258	64,881	63,864	2,899,635	18,014	639,066	2,463,468	159,951	57,926	3,291,458	94,426	147,757
March	2,248,053	49,051	13,882	2,915,896	21,208	32,113	3,437,210	67,038	148,020	4,316,399	176,329	105,960
April	2,489,741	45,383	91,918	2,730,723	49,038	4,855	3,223,870	28,818	68,739	2,775,259	116,939	20,565
May	4,025,234	53,984	117,922	2,534,976	20,265	14,556	2,664,381	54,660	18,996	3,496,513	169,140	33,570
June	2,054,097	53,790	54,634	2,295,261	37,453	77,014	2,546,399	54,614	50,465	2,487,368	94,990	22,492
July	2,677,194	47,998	124,687	3,230,939	31,805	178,775	2,873,814	35,730	121,625	4,349,964	61,063	14,427
August	2,661,712	38,120	170,095	2,588,114	13,964	3,486	3,167,477	21,171	36,186	3,211,602	173,758	116,220
September	2,241,124	27,357	53,851	2,285,349	12,874	69,500	2,685,400	24,785	19,721	3,761,992	56,025	503,159
October	2,506,560	16,959	139,202	2,183,161	7,861	55,803	3,012,228	10,707	55,250	5,949,418	35,060	2,320
November	2,436,396	10,773	157,737	2,361,687	2,680	5,039	4,671,980	16,247	31,302	5,165,486	45,649	10,260
December	2,621,114	7,857	36,582	2,243,392	25,624	53,910	3,302,569	4,232	94,063	2,794,736	234,982	12,661

Source: Gambia Bureau of Statistics

### 3.3 Exports to Continents, Economic and Geographical Regions from 2012-2022, (in '000' GMD)

Table 3.3.1: Exports to Continents, Economic and Geographical Regions from 2012-2022 (in '000' GMD)

Year	2012	2013	2014	2015	2016	2017	2018	2019	2020	2021	2022
Partner	Exports	Exports	Exports	Exports	Exports	Exports	Exports	Exports	Exports	Exports	Exports
AFRICA	26,330	20,791	43,678	40,561	11,632	19,242	33,043	28,334	40,229	49,382	117,628
<i>OF WHICH</i>											
ECOWAS	16,223	9,759	24,674	36,370	5,604	6,543	22,306	19,688	38,172	48,341	115,006
REST OF AFRICA	10,107	11,032	19,005	4,191	6,028	12,700	10,738	8,645	2,057	1,041	2,623
EUROPE	199,616	74,093	78,700	347,696	44,242	57,203	64,717	52,367	40,059	19,694	264,017
<i>OF WHICH</i>											
EU	174,917	70,136	78,021	347,342	44,242	55,681	64,717	38,886	31,205	19,560	213,470
AMERICAS	5,574	2,795	1,972	1,328	2,347	11,230	7,212	27,162	12,540	4,554	12,230
ASIA	356,284	307,931	545,281	425,175	686,207	550,853	120,045	344,028	168,360	493,700	895,828
<b>SUBTOTAL</b>	<b>587,804</b>	<b>405,610</b>	<b>669,632</b>	<b>814,760</b>	<b>744,428</b>	<b>638,529</b>	<b>225,018</b>	<b>451,891</b>	<b>261,188</b>	<b>565,303</b>	<b>1,289,703</b>
REST OF THE WORLD	0	7,798	0	15	0	755	0	0	0	2,027	0
<b>TOTAL EXPORTS</b>	<b>587,804</b>	<b>413,409</b>	<b>669,632</b>	<b>814,775</b>	<b>744,428</b>	<b>639,284</b>	<b>225,018</b>	<b>451,891</b>	<b>261,188</b>	<b>567,330</b>	<b>1,289,703</b>

Source: Gambia Bureau of Statistics

### 3.4 Imports to Continents, Economic and Geographical Regions from 2012-2022, (in '000' GMD)

Table 3.4.1: Imports to Continents, Economic and Geographical Regions from 2012-2022 (in '000' GMD)

Year	2012	2013	2014	2015	2016	2017	2018	2019	2020	2021	2022
Partner	Imports	Imports	Imports	Imports	Imports	Imports	Imports	Imports	Imports	Imports	Imports
AFRICA	4,365,558	3,888,011	4,446,781	5,863,389	3,732,071	12,312,844	14,891,631	11,335,901	11,048,196	16,207,988	19,645,043
<i>OF WHICH</i>											
ECOWAS	4,010,990	3,674,445	4,187,582	5,594,754	3,482,740	12,050,509	14,412,478	10,464,440	10,338,745	15,554,426	17,764,870
REST OF AFRICA	354,568	213,566	259,199	268,636	249,332	262,335	479,153	871,461	709,451	653,562	1,880,173
EUROPE	3,117,398	3,547,323	4,673,378	4,365,498	5,653,128	5,442,008	8,375,551	7,044,110	11,720,447	9,422,698	8,810,278
<i>OF WHICH</i>											
EU	2,346,484	2,782,553	3,984,703	3,878,043	5,044,862	4,519,782	7,255,099	5,670,350	4,712,551	7,611,099	6,103,205
AMERICAS	1,297,580	1,753,637	2,227,515	2,438,200	2,439,320	2,506,917	3,480,980	3,675,664	3,183,999	3,390,194	3,790,234
ASIA	3,302,733	3,292,876	4,754,192	3,931,370	4,031,442	5,326,138	5,837,451	8,986,479	8,927,585	7,482,617	12,627,003
<b>SUBTOTAL</b>	<b>12,083,269</b>	<b>12,481,847</b>	<b>16,101,865</b>	<b>16,598,457</b>	<b>15,855,961</b>	<b>25,587,908</b>	<b>32,585,612</b>	<b>31,042,153</b>	<b>34,880,227</b>	<b>36,503,496</b>	<b>44,872,558</b>
REST OF THE WORLD	75,330	68,407	38,335	41,973	42,788	90,144	35,978	33,996	33,526	17,728	16,216
<b>TOTAL IMPORTS</b>	<b>12,158,600</b>	<b>12,550,253</b>	<b>16,140,200</b>	<b>16,640,430</b>	<b>15,898,749</b>	<b>25,678,051</b>	<b>32,621,590</b>	<b>31,076,150</b>	<b>34,913,753</b>	<b>36,521,225</b>	<b>44,888,775</b>

Source: Gambia Bureau of Statistics



### 3.5 Imports from Main Countries, 2020-2022 (in '000' GMD)

Table 3.5.1: Imports from Main Countries, 2020-2022 (in '000' GMD)

2020		2021		2022	
Country	Imports	Country	Imports	Country	Imports
Cote d'Ivoire	6,327,659	Togo	9,287,664	Cote d'Ivoire	13,447,993
Norway	3,878,482	Cote d'Ivoire	4,518,704	China	4,139,504
China	2,984,504	China	2,779,751	United Arab Emirates	3,172,087
Togo	2,829,640	Denmark	2,178,526	Senegal	3,071,645
Brazil	2,266,957	India	2,056,274	India	2,726,702
Turkey	2,194,742	Brazil	1,783,709	Brazil	1,743,026
India	1,304,250	Senegal	1,597,159	Turkey	1,715,912
Japan	1,132,499	Spain	1,446,511	Morocco	1,413,967
Senegal	1,010,328	Turkey	1,344,457	Belgium	1,402,879
Spain	934,653	Belgium	845,507	United States	1,036,505

Source: Gambia Bureau of Statistics

### 3.6 Exports from Main Countries, 2020-2022 (in '000' GMD)

Table 3.6.1: Exports from Main Countries, 2020-2022 (in '000' GMD)

2020		2021		2022	
Country	Exports	Country	Exports	Country	Exports
China	59,897	China	395,313	China	643,313
India	59,480	India	49,714	India	99,723
Senegal	30,107	Senegal	35,416	Spain	99,162
Vietnam	25,171	Viet Nam	29,711	Viet Nam	92,214
Republic of Korea	17,667	Republic of Korea	8,309	Belgium	55,920
Netherlands	8,969	Greece	7,477	Italy	43,944
Chile	8,475	Thailand	5,461	Turkey	42,865
Spain	7,204	Netherlands	5,174	Republic of Korea	27,515
Turkey	6,894	Guinea-Bissau	3,935	Guinea	14,684
Italy	4,889	Mali	3,136	Malaysia	14,154

Source: Gambia Bureau of Statistics

### 3.7 Imports of Top Ten Products from 2020-2022, Value (in '000' GMD)

Table 3.7.1: Imports of Top Ten Products from 2020-2022, Value (in '000' GMD)

2020		2021		2022	
PRODUCTS	IMPORTS	PRODUCT	IMPORTS	PRODUCT	IMPORTS
Mineral fuels, mineral oils and products of their distillation; bituminous substances; mineral waxes	9,444,460	Mineral fuels, mineral oils and products of their distillation; bituminous substances; mineral waxes	14,052,681	Mineral fuels, mineral oils, and products of their distillation; bituminous substances; mineral waxes	17,744,995
Ships, boats and floating structures	3,886,540	Vehicles other than railway or tramway rolling-stock, and parts and accessories thereof	3,886,285	Vehicles other than railway or tramway rolling stock, and parts and accessories thereof	4,286,900
Vehicles other than railway or tramway rolling-stock, and parts and accessories thereof	2,842,951	CEREALS	2,889,842	Cereals	3,013,113
CEREALS	2,598,994	Salt; sulphur; earths and stone; plastering materials, lime and cement	1,343,695	Electrical machinery and equipment and parts thereof; sound recorders and reproducers, television image and sound recorders and reproducers, and parts and accessories of such articles	2,183,020
Salt; sulphur; earths and stone; plastering materials, lime and cement	1,753,048	Animal or vegetable fats and oils and their cleavage products; prepared edible fats; animal or vegetable waxes	1,175,392	Salt; Sulphur; earths and stone; plastering materials, lime, and cement	1,389,622
SUGARS AND SUGAR CONFECTIONERY	1,424,668	Electrical machinery and equipment and parts thereof; sound recorders and reproducers, television image and sound recorders and reproducers, and parts and accessories of such articles	1,118,006	Nuclear reactors, boilers, machinery, and mechanical appliances; parts thereof	1,309,800
Animal or vegetable fats and oils and their cleavage products; prepared edible fats; animal or vegetable waxes	1,349,505	SUGARS AND SUGAR CONFECTIONERY	1,011,349	Fertilizers	1,191,597
Products of the milling industry; malt; starches; inulin; wheat gluten	1,103,233	Dairy produce; birds' eggs; natural honey; edible products of animal origin, not elsewhere specified or included	795,863	Sugars and sugar confectionery	1,089,783
Electrical machinery and equipment and parts thereof; sound recorders and reproducers, television image and sound recorders and reproducers, and parts and accessories of such articles	909,626	Tools, implements, cutlery, spoons and forks, of base metal; parts thereof of base metal	782,447	Animal or vegetable fats and oils and their cleavage products; prepared edible fats; animal or vegetable waxes	1,005,653
IRON AND STEEL	611,944	Meat AND EDIBLE MEAT OFFAL	548,529	Articles of iron or steel	990,645
<b>SUBTOTAL</b>	<b>25,924,970</b>	<b>SUB TOTAL</b>	<b>27,604,090</b>	<b>SUBTOTAL</b>	<b>34,205,128</b>
<b>OTHER PRODUCTS</b>	<b>8,988,783</b>	<b>OTHER PRODUCTS</b>	<b>8,917,135</b>	<b>OTHER PRODUCTS</b>	<b>10,683,646</b>
<b>TOTAL IMPORTS</b>	<b>34,913,753</b>	<b>TOTAL IMPORTS</b>	<b>36,521,225</b>	<b>TOTAL IMPORTS</b>	<b>44,888,775</b>

Source: Gambia Bureau of Statistics

### 3.8 Exports of Top Ten Products from 2020-2022, Values (in '000' GMD)

Table 3.8.1: Exports of Top Ten Products from 2020-2022, Values (in '000' GMD)

2020		2021		2022	
PRODUCT	EXPORTS	PRODUCT	EXPORTS	PRODUCT	EXPORTS
Fish and crustaceans, molluscs and other aquatic invertebrates	78,659	CEREALS	191,986	Edible fruit and nuts; peel of citrus fruit or melons	308,291
EDIBLE FRUIT AND NUTS; PEEL OF CITRUS FRUIT OR MELONS	53,667	Oil seeds and oleaginous fruits; miscellaneous grains, seeds and fruit; industrial or medicinal plants; straw and fodder	146,123	Oil seeds and oleaginous fruits; miscellaneous grains, seeds, and fruit; industrial or medicinal plants; straw and fodder	300,565
Oil seeds and oleaginous fruits; miscellaneous grains, seeds and fruit; industrial or medicinal plants; straw and fodder	51,247	EDIBLE FRUIT AND NUTS; PEEL OF CITRUS FRUIT OR MELONS	81,979	Fish and crustaceans, molluscs, and other aquatic invertebrates	212,287
Residues and waste from the food industries; prepared animal fodder	18,595	Fish and crustaceans, molluscs and other aquatic invertebrates	75,146	Animal or vegetable fats and oils and their cleavage products; prepared edible fats; animal or vegetable waxes	162,873
Animal or vegetable fats and oils and their cleavage products; prepared edible fats; animal or vegetable waxes	15,980	Residues and waste from the food industries; prepared animal fodder	27,689	Preparations of vegetables, fruit, nuts, or other parts of plants	77,030
Products of the milling industry; malt; starches; inulin; wheat gluten	12,488	Salt; sulphur; earths and stone; plastering materials, lime and cement	24,292	Iron and steel	41,944
Salt; sulphur; earths and stone; plastering materials, lime and cement	10,931	Animal or vegetable fats and oils and their cleavage products; prepared edible fats; animal or vegetable waxes	7,658	Salt; Sulphur; earths and stone; plastering materials, lime, and cement	21,231
Preparations of meat, of fish or of crustaceans, molluscs or other aquatic invertebrates	7,496	IRON AND STEEL	2,882	Residues and waste from the food industries; prepared animal fodder	15,935
Ores, slag and ash	3,990	SUGARS AND SUGAR CONFECTIONERY	2,234	Ores, slag, and ash	14,309
Works of art, collectors' pieces and antiques	3,006	Products of the milling industry; malt; starches; inulin; wheat gluten	1,701	Products of animal origin, not elsewhere specified or included	10,644
<b>SUBTOTAL</b>	<b>256,061</b>	<b>SUB TOTAL</b>	<b>561,691</b>	<b>SUBTOTAL</b>	<b>1,165,110</b>
<b>OTHER PRODUCTS</b>	<b>5,127</b>	<b>OTHER PRODUCTS</b>	<b>5,639</b>	<b>OTHER PRODUCTS</b>	<b>51,720</b>
<b>TOTAL EXPORTS</b>	<b>261,188</b>	<b>TOTAL</b>	<b>567,330</b>	<b>TOTAL EXPORTS</b>	<b>1,216,830</b>

Source: Gambia Bureau of Statistics

### 3.9 Imports from Ecowas Countries from 2018-2022, Value (in '000' GMD)

Table 3.9.1: Imports from Ecowas Countries from 2018-2022, Value (in '000' GMD)

Year	2018	2019	2020	2021	2022
Country	Imports	Imports	Imports	Imports	Imports
Burkina Faso	2	0	0	356	0
Benin	176	512	0	144	371
Cote d'Ivoire	13,435,666	9,467,126	6,327,659	4,518,704	13,447,993
Cape Verde	126	214	0	0	0
Ghana	53,965	30,206	26,570	23,066	33,711
Guinea	25,049	23,617	10,039	16,333	90,421
Guinea-Bissau	40	14,765	0	0	2,017
Liberia	1,479	930	2,665	3,391	12,177
Mali	933	720	249	777	148
Niger	158	7,651	32,114	0	1,394
Nigeria	95,927	145,845	87,230	61,775	51,677
Sierra Leone	9,361	120,788	12,251	45,057	22,392
Senegal	774,206	642,810	1,010,328	1,597,159	3,071,645
Togo	15,389	9,256	2,829,640	9,287,664	1,030,924

Source: Gambia Bureau of Statistics

### 3.10 Exports to Ecowas Countries from 2018-2022, Value (in '000' GMD)

Table 3.10.1: Exports to Ecowas Countries from 2018-2022, Value (in '000' GMD)

<b>Year</b>	<b>2018</b>	<b>2019</b>	<b>2020</b>	<b>2021</b>	<b>2022</b>
<b>Country</b>	<b>Exports</b>	<b>Exports</b>	<b>Exports</b>	<b>Exports</b>	<b>Exports</b>
Burkina Faso	0	0	0	0	672
Benin	0	0	0	2,027	5,116
Cote d'Ivoire	0	426	1,391	0	1,579
Ghana	0	0	0	641	111
Guinea	5,529	660	1,553	2,020	14,684
Guinea-Bissau	8,196	3,837	2,196	3,935	5,309
Liberia	152	0	675	1,167	8,738
Mali	0	0	2,250	3,136	73,511
Niger	0	7,418	0		136
Nigeria	915	1,303	0	0	404
Sierra Leone	97	0	0	0	0
Senegal	7,251	5,713	30,107	35,416	904
Togo	166	332	0	0	3,842

Source: Gambia Bureau of Statistics

### 3.11 Imports of Selected Basic Products from 2016-2022 (in '000' GMD)

Table 3.11.1: Imports of Selected Basic Products from 2016-2022 (in '000' GMD)

Year	2016	2017	2018	2019	2020	2021	2022
Products	Imports	Imports	Imports	Imports	Imports	Imports	Imports
EDIBLE VEGETABLES AND CERTAIN ROOTS AND TUBERS	299,250	219,917	289,488	166,391	186,085	230,147	171,751
<b>OF WHICH</b>							
Potatoes, fresh or chilled	40,158	27,956	50,916	21,077	29,366	54,357	28,825
Onions and shallots	161,150	167,237	210,505	104,558	108,703	131,647	87,495
RICE	1,488,629	2,047,739	2,459,754	2,003,105	2,335,242	1,978,688	2,027,004
Wheat or meslin flour	415,017	848,005	375,519	389,148	1,076,550	276,538	379,362
REFINED CANE SUGAR	1,208,885	1,123,735	1,458,687	1,767,627	1,372,476	1,799,569	1,089,783
Total Cement	760,640	887,870	733,723	961,459	1,523,279	1,001,164	985,105
<b>OF WHICH</b>							
Portland Cement	757,196	868,592	652,339	959,141	1,329,171	979,386	732,138
White cement	3,110	18,200	1,744	2,294	3,101	5,044	3,783
Tomatoes Paste	71,959	50,573	70,025	44,976	93,809	98,304	63,131
Beverages, spirits and vinegar	116,467	83,805	128,782	233,819	210,700	312,533	261,307
<b>OF WHICH</b>							
Vinegar	500	210	604	564	960	607	1,452
Alcohol	39,273	3,947	5,332	5,002	9,018	11,427	15,033
Mineral Water	76,694	79,648	122,846	228,254	200,722	297,029	244,822
Eggs	51,088	44,014	62,710	79,011	88,507	129,910	112,777
Milk and Milk Products	252,063	267,150	314,251	409,389	506,274	664,797	500,417
Vegetable Oil	1,685,972	1,440,513	1,003,041	1,680,609	1,311,068	1,175,285	972,337

Source: Gambia Bureau of Statistics

## Chapter 4 Transport and Tourism

### 4.1 Visitor Arrivals

#### 4.1.1 Air arrivals to The Gambia by nationality, 2012-2022

Table 4.1.1: Air arrivals to The Gambia by nationality, 2012-2022

Nationality	2012	2013	2014	2015	2016	2017	2018	2019	2020	2021	2022
British	58,029	45,866	46,802	33,288	41,532	37,250	52,102	43,839	13,554	13,068	31,511
Swedish	8,057	7,953	6,209	5,856	7,423	8,565	17,569	15,700	6,160	3,235	4,486
Danish	1,660	1,448	1,765	947	1,216	1,695	2,675	4,547	2,155	771	1,175
Finnish	1,896	2,624	2,696	1,687	4,264	4,631	4,287	4,674	1,723	467	899
Norwegian	1,540	1,878	2,631	1,730	1,623	1,979	2,365	2,498	878	779	1,597
German	5,350	6,250	4,842	3,752	4,201	5,346	5,397	22,611	7,636	4,391	6,876
Belgian	5,322	5,068	4,297	3,535	5,063	7,346	8,533	8,864	3,669	2,254	5,058
Dutch	18,699	25,517	19,497	14,340	24,260	25,770	31,509	34,723	14,909	3,960	13,932
Spanish	3,570	5,680	5,560	5,671	5,488	6,001	7,587	8,077	2,515	5,595	9,619
French	1,147	1,568	1,377	1,292	1,571	2,536	2,439	2,634	1,232	2,495	4,216
American	3,149	3,104	3,746	3,764	3,997	4,257	5,131	6,284	3,028	8,930	11,141
Italian	412	562	487	364	666	816	1,728	1,512	985	691	1,056
Austrian	402	910	305	312	759	582	720	830	265	284	566
Czechs	193	113	2,195	5,875	4,997	418	358	307	208	87	318
Polish	272	1,980	2,527	1,900	2,565	2,536	3,349	4,886	3,967	309	2,072
Irish	2,084	1,539	668	227	356	534	602	536	209	160	473
Nigerian	5,851	7,124	4,426	4,542	3,102	3,888	5,388	6,019	1,818	3,456	5,930
Gambian	23,252	29,175	30,204	28,532	30,544	29,322	32,652	40,484	15,751	34,615	52,876
African	10,340	15,684	10,288	10,294	10,333	9,337	11,171	16,093	4,229	7,851	11,978
Others	6,098	7,156	5,200	6,652	7,166	9,266	10,620	10,527	3,752	5,137	9,938
Russian	0	0	0	0	0	0	2,961	144	63	121	82
China	0	0	0	0	0	0	0	0	484	276	422
Saudi Araba	0	0	0	0	0	0	0	0	42	125	205
Senegal	0	0	0	0	0	0	0	0	0	3,403	6,369
<b>Total</b>	<b>157,323</b>	<b>171,199</b>	<b>155,722</b>	<b>134,560</b>	<b>161,126</b>	<b>162,075</b>	<b>209,143</b>	<b>235,789</b>	<b>89,232</b>	<b>102,460</b>	<b>182,795</b>

Source: Gambia Tourism Board

#### 4.1.2 Tourist Arrivals by port of entry, 2017-2022

<b>Port of Entry</b>	<b>2017</b>	<b>2018</b>	<b>2019</b>	<b>2020</b>	<b>2021</b>	<b>2022</b>
Air	162,075	209,135	235,788	89,232	102,460	182,795
Land	347,622	332,413	370,554	148,024	217,593	374,352
Sea	11,856	10,475	14,094	8,927	11,669	12,835
<b>Total</b>	<b>521,553</b>	<b>552,023</b>	<b>620,436</b>	<b>246,183</b>	<b>331,722</b>	<b>569,982</b>

*Table 4.1.2: Tourist Arrivals by port of entry, 2012-2022*

Source: Gambia Tourism Board

## 4.2 Air Transport

#### 4.2.1 Air traffic at Banjul International Airport, 2016 -2022

*Table 4.2.1: Air traffic at Banjul International Airport, 2016 -2022*

<b>Air Traffic</b>	<b>2016</b>	<b>2017</b>	<b>2018</b>	<b>2019</b>	<b>2020</b>	<b>2021</b>	<b>2022</b>
Aircraft Movements	3,165	3,618	4,364	5,462	2,398	3,008	2497
Passengers disembarked	4,745	5,426	6,543	241,637	102,529	98,315	180473
Passengers embarked	166,310	157,911	202,800	232,396	93,504	101,624	176392
Total Passengers Handled	171,055	163,337	209,343	474,033	196,033	199,939	356865
Freight unloaded (Kgs)	615,132	565,440	629,612	1,043,740	606,426	748,122	647586
Freight loaded (Kgs)	1,150,995	830,135	821,853	632,616	539,475	754,322	793852
Total Freight Handled	1,766,127	1,395,575	1,451,465	1,676,356	1,145,901	1,502,444	1441438
Mail unloaded (Kgs)	22,839	23,367	29,101	9,713	5,869	22,789	8781
Mail loaded (Kgs)	14,978	21,653	11,833	26,608	14,815	15,083	12833
Total Mail Handled (Kgs)	37,817	45,020	40,934	36,321	20,684	37,872	21614

*Source: Gambia Civil Aviation Authority and Gambia International Airline*



## 4.3 Road Transport

### 4.3.1 Countrywide Motor Traffic Accident Statistics, 2012-2022

Table 4.3.1: Countrywide Motor Traffic Accident Statistics, 2012-2022

Year	No of Accident Cases Reported	A Persons involved			B Serious injury	C Persons involved		D Non-injury	E Persons involved		Number of persons killed annually			
		Fatal	M	F		M	F		M	F				
2012	805	69	60	19	217	266	122	343	296	130	176	0	0	79
2013	804	95	79	56	243	248	171	247	223	107	219	0	0	135
2014	875	105	91	34	300	273	157	305	253	201	165	0	0	125
2015	729	87	89	37	244	265	137	247	217	128	151	120	42	126
2016	860	102	32	47	280	334	184	273	244	161	205	183	39	79
2017	802	123	102	36	269	399	190	228	234	122	182	190	49	138
2018	970	141	93	36	319	308	152	280	298	173	230	234	42	129
2019	1,123	129	113	39	386	430	189	385	370	204	223	312	28	152
2020	1,107	138	111	42	349	402	133	408	419	176	212	287	36	153
2021	1218	155	156	44	350	309	131	362	325	138	351	403	68	200
2022	1002	130	144	43	391	502	158	306	337	158	173	230	52	187
<b>Total</b>	<b>10,146</b>	<b>1,237</b>	<b>1,027</b>	<b>414</b>	<b>3,168</b>	<b>3,456</b>	<b>1,659</b>	<b>3,323</b>	<b>3,064</b>	<b>1,640</b>	<b>2,2418</b>	<b>1,729</b>	<b>304</b>	<b>1,441</b>

Source: Gambia Police Force

## Chapter 5 Education

### 5.1 Early Childhood Care and Development

#### 5.1.1 Day Care Centre (DCC), Historical Trend - Global Figures - National Level, 2013-2022

Table 5.1.1: Day Care Centre (DCC), Historical Trend - Global Figures - National Level, 2013-2022

Year	Total DCC Centres	Children Boys	Children Girls	Children Total	Carers Male	Carers Female	Carers Total	Average Children per Centre	Children %Girls	Average Children per Carer	%Female Carers
2013	29	345	384	729	6	49	55	25	53	13	89
2014	57	914	940	1,854	17	78	95	33	51	20	82
2015	65	793	882	1,675	22	90	112	26	53	15	80
2016	70	887	978	1,865	11	89	100	27	52	19	91
2017	74	1,005	1,081	2,086	21	127	148	28	52	14	86
2018	83	1,053	1,115	2,168	23	134	157	26	51	14	85
2019	113	1,401	1,470	2,871	37	199	236	25	51	12	84
2020	112	1,375	1,405	2,780	61	206	267	25	51	10	77
2021	114	1,251	1,275	2,526	43	168	211	22	50	12	80
2022	114	1,267	1,346	2,613	23	186	209	23	52	13	89

Source: MoBSE / PPARBD – Statistical Yearbook – 2021/2022

### 5.1.2 Early Childhood Development (ECD), Historical Trend - Global Figures - National Level, 2013-2022

Table 5.1.2: Early Childhood Development (ECD), Historical Trend - Global Figures - National Level, 2013-2022

Year	Total ECD Centres	Centres with Permanent Structure	Classes Total	Participant Boys	Participant Girls	Participant Total	Facilitators Male	Facilitators Female	Facilitators Total	Facilitators Trained
2013	892	468	2,381	37,004	38,845	75,849	987	1,127	2,114	1,442
2014	1,014	551	2,646	42,625	44,396	87,021	1,165	1,236	2,401	1,716
2015	1,115	586	3,087	48,118	49,436	97,554	1,321	1,365	2,686	1,964
2016	1,141	613	3,076	49,255	51,094	100,349	1,458	1,614	3,072	2,182
2017	1,154	663	3,092	50,528	53,161	103,689	1,444	1,686	3,130	2,189
2018	1,257	813	3,259	57,852	60,135	117,987	1,496	1,976	3,472	2,456
2019	1,382	839	3,535	61,164	64,617	125,781	1,412	2,047	3,459	2,470
2020	1,432	880	3,751	63,664	66,448	130,112	1,354	2,289	3,643	2,684
2021	1,460	956	3,958	61,358	65,215	126,573	1,446	2,600	4,046	3,018
2022	1,497	1,041	4,084	63,336	67,616	130,952	1,354	2,951	4,305	3,283

Source: MoBSE / PPARBD – Statistical Yearbook – 2021/2022

## 5.2 Lower Basic Education (LBE)

### 5.2.1 LBE, Historical Trend - Global Figures - National Level, 2012-2022

Table 5.2.1: LBE, Historical Trend - Global Figures - National Level, 2012-2022

Year	LBE Schools	Permanent Classrooms	Total Seats	Total Desks	Total Classes	Total Enrolment	Total Girls	Total Repeaters	Total Teacher	Qualified Teachers
2012	692	4,789	115,130	114,640	6,571	244,033	123,765	6,403	4,940	3,819
2013	789	5,797	158,129	147,178	7,173	256,912	130,184	8,835	6,868	5,592
2014	861	5,915	152,786	137,400	7,662	274,939	140,069	10,203	7,464	6,278
2015	928	6,380	167,400	150,381	8,203	293,503	150,320	15,543	7,902	6,781
2016	958	6,632	176,090	159,019	8,586	308,729	158,636	16,038	8,730	7,592
2017	994	6,978	188,406	169,585	9,009	329,828	170,065	17,940	9,049	7,973
2018	1,061	7,483	193,173	173,490	9,513	350,323	181,513	17,598	9,585	8,371
2019	1,153	7,961	200,772	179,820	10,109	374,962	195,439	17,646	10,110	8,878
2020	1,186	8,257	204,453	187,450	10,513	393,057	205,804	19,785	10,780	9,452
2021	1,229	8,792	208,495	192,881	12,298	401,333	211,129	19,105	12,116	10,614
2022	1,260	9,147	232,187	216,247	11,851	414,477	218,878	17,600	12,786	11,302

Source: MoBSE / PPARBD – Statistical Yearbook – 2021/2022

## 5.2.2 LBE, 2020 - Global Figures - National Level

Table 5.2.2: LBE, 2022 - Global Figures - National Level

Local Management	LBE Schools	Perm. Classrooms	Total Seats	Total Desks	Total Classes	Total Enrolment	Total Girls	Total Repeaters	Total Teachers	Qualified Teachers
<b>Public</b>										
Government	567	4,752	121,484	114,760	7,016	247,939	133,458	11,277	7,788	7,720
Grant-Aided	47	472	14,648	14,214	643	28,135	15,010	488	766	693
<b>Total Public</b>	<b>614</b>	<b>5,224</b>	<b>136,132</b>	<b>128,974</b>	<b>7,659</b>	<b>276,074</b>	<b>148,468</b>	<b>11,765</b>	<b>8,554</b>	<b>8,413</b>
<b>Private</b>										
Private - Conventional.	239	1,651	43,836	40,908	1,634	45,495	24,578	624	1,938	1,601
Madrassa	407	2,272	52,219	46,365	2,558	92,908	45,832	5,211	2,294	1,288
<b>Total Private</b>	<b>646</b>	<b>3,923</b>	<b>96,055</b>	<b>87,273</b>	<b>4,192</b>	<b>138,403</b>	<b>70,410</b>	<b>5,835</b>	<b>4,232</b>	<b>2,889</b>
<b>National Total</b>	<b>1,260</b>	<b>9,147</b>	<b>232,187</b>	<b>216,247</b>	<b>11,851</b>	<b>414,477</b>	<b>218,878</b>	<b>17,600</b>	<b>12,786</b>	<b>11,302</b>

Source: MoBSE / PPARBD – Statistical Yearbook – 2021/2022

## 5.2.3 LBE, 2022 - Enrolment - By Grade & Gender National Level

Table 5.2.3: LBE, 2022 - Enrolment - By Grade & Gender National Level

Local Management	Grade 1		Grade 2		Grade 3		Grade 4		Grade 5		Grade 6		Total #Boys	Total #Girls
	#Boys	#Girls	#Boys	#Girls	#Boys	#Girls	#Boys	#Girls	#Boys	#Girls	#Boys	#Girls		
<b>Public</b>														
Government	22,676	25,596	20,375	23,810	20,458	23,301	18,797	22,259	16,506	19,754	15,669	18,738	114,481	133,458
Grant-Aided	2,261	2,561	2,077	2,464	2,349	2,585	2,233	2,525	2,119	2,508	2,086	2,367	13,125	15,010
<b>Public - Total</b>	<b>24,937</b>	<b>28,157</b>	<b>22,452</b>	<b>26,274</b>	<b>22,807</b>	<b>25,886</b>	<b>21,030</b>	<b>24,784</b>	<b>18,625</b>	<b>22,262</b>	<b>17,755</b>	<b>21,105</b>	<b>127,606</b>	<b>148,468</b>
<b>Private</b>														
Private - Conventional	4,330	4,795	3,931	4,508	3,667	4,507	3,404	4,041	3,063	3,610	2,522	3,117	20,917	24,578
Madrassa	10,608	9,988	9,466	8,984	8,492	8,440	7,717	7,605	6,068	5,935	4,725	4,880	47,076	45,832
<b>Private - Total</b>	<b>14,938</b>	<b>14,783</b>	<b>13,397</b>	<b>13,492</b>	<b>12,159</b>	<b>12,947</b>	<b>11,121</b>	<b>11,646</b>	<b>9,131</b>	<b>9,545</b>	<b>7,247</b>	<b>7,997</b>	<b>67,993</b>	<b>70,410</b>
<b>National - Total</b>	<b>39,875</b>	<b>42,940</b>	<b>35,849</b>	<b>39,766</b>	<b>34,966</b>	<b>38,833</b>	<b>32,151</b>	<b>36,430</b>	<b>27,756</b>	<b>31,807</b>	<b>25,002</b>	<b>29,102</b>	<b>195,599</b>	<b>218,878</b>

Source: MoBSE / PPARBD – Statistical Yearbook – 2021/2022

#### 5.2.4 LBE, 2022 - Teaching Staff - By Qualification & Gender - National Level

Table 5.2.4: LBE, 2022 - Teaching Staff - By Qualification & Gender - National Level

Local Management	Male Teachers	Female Teachers	Total Teachers	% Total			Male Qualified	Female Qualified	% Female Qualified (Out of All Qualified)	% Female Qualified (Out of All Female)
				% Female Teachers	Total Qualified	% Total Qualified				
<b>Public</b>										
Government	3,849	3,939	7,788	50.6	7,720	99.0	3,799	3,921	50.8	100.0
Grant-Aided	341	425	766	55.5	693	90.0	316	377	54.4	89.0
<b>Private</b>										
Private- Conventional	1,244	694	1,938	35.8	1,601	83.0	1,046	555	34.7	80.0
Madrassa	1,706	588	2,294	25.6	1,288	56.0	967	321	24.9	55.0
<b>National – Total</b>	<b>7,140</b>	<b>5,646</b>	<b>12,786</b>	<b>44.2</b>	<b>11,302</b>	<b>88.0</b>	<b>6,128</b>	<b>5,174</b>	<b>45.8</b>	<b>92.0</b>

Source: MoBSE / PPARBD – Statistical Yearbook – 2021/2022

#### 5.2.5 LBE, 2022 - Teaching Staff - By Qualification & Nationality - National Level

Table 5.2.5: LBE, 2022 - Teaching Staff - By Qualification & Nationality - National Level

Local Management	No. of Total Teachers		Share of Total Teachers		Qualified Teachers		Share of Qualified Teachers	
	Gambians	Non-Gambians	Gambians	Non-Gambians	Gambians	Non-Gambians	Gambians	Non-Gambians
<b>Public</b>								
Government	7,590	198	97.5	2.5	7,527	193	97.5	2.50
Grant-Aided	746	20	97.4	2.6	676	17	97.5	2.50
<b>Private</b>								
Private-Conv.	1,378	560	71.1	28.9	1,123	478	70.1	29.9
Madrassa	2,221	73	96.8	3.2	1,241	47	96.4	3.6
<b>National - Total</b>	<b>11,935</b>	<b>851</b>	<b>93.3</b>	<b>6.7</b>	<b>10,567</b>	<b>735</b>	<b>93.5</b>	<b>6.5</b>

Source: MoBSE / PPARBD – Statistical Yearbook – 2021/2022

5.2.6 LBE, 2022 - Special Needs Children - By Grade & Sex - National Level

Table 5.2.6: LBE, 2022 - Special Needs Children - By Grade & Sex - National Level

Local Management	Grade 1		Grade 2		Grade 3		Grade 4		Grade 5		Grade 6		Total
	#Boys	#Girls	#Boys	#Girls	#Boys	#Girls	#Boys	#Girls	#Boys	#Girls	#Boys	#Girls	
<b>Public</b>													
Visual	92	95	90	103	108	149	161	151	110	133	134	159	1,485
Hearing	29	40	56	61	60	62	56	65	50	57	56	48	640
Speaking	90	37	56	40	52	31	45	29	32	31	26	13	482
Physical	59	51	46	28	57	44	51	35	42	32	46	44	535
Mental	35	35	46	43	39	32	21	58	68	58	76	61	572
Other	13	22	27	20	12	7	20	16	8	12	8	11	176
Multiple Impairments	67	26	16	12	22	12	18	16	16	7	8	15	235
<b>Private</b>													
Visual	86	41	70	73	82	80	68	78	87	81	55	67	868
Hearing	30	13	39	35	33	30	27	34	30	21	9	16	317
Speaking	55	31	38	24	24	17	26	10	25	10	8	14	282
Physical	27	16	32	25	20	6	22	25	22	14	17	15	241
Mental	17	5	6	12	14	16	17	15	7	14	7	6	136
Other	16	12	15	27	12	6	13	9	6	5	2	4	127
Multiple Impairments	17	10	8	10	8	3	3	3	3	1	3	1	70
<b>Total</b>	<b>633</b>	<b>434</b>	<b>545</b>	<b>513</b>	<b>543</b>	<b>495</b>	<b>548</b>	<b>544</b>	<b>506</b>	<b>476</b>	<b>455</b>	<b>474</b>	<b>6,166</b>

Source: MoBSE / PPARBD – Statistical Yearbook – 2021/2022

### 5.3 Upper Basic Education (UBE)

#### 5.3.1 UBE, Historical Trend Global Figures National Level, 2013-2022

Table 5.3.1: UBE, Historical Trend Global Figures National Level, 2013-2022

Year	UBE Schools	Perm. Classrooms	Total Seats	Total Desks	Total Classes	Total Enrolment	Total Girls	Total Repeaters	Total Teachers	Qualified Teachers
2013	306	1,678	53,028	51,467	1,971	84,825	42,421	2,936	2,873	2,516
2014	325	1,866	56,932	54,221	2,023	87,391	44,146	2,973	3,154	2,853
2015	361	1,970	58,279	55,009	2,155	90,176	45,617	4,082	3,837	3,472
2016	390	2,004	62,453	59,731	2,246	90,838	46,554	2,791	3,901	3,652
2017	399	2,094	64,991	60,301	2,353	94,357	49,400	3,078	4,201	3,968
2018	438	2,125	66,692	61,024	2,448	98,108	51,997	3,114	4,770	4,493
2019	481	2,287	68,058	62,932	2,598	104,554	55,470	3,854	5,310	5,061
2020	505	2,472	69,551	64,662	2,771	111,752	60,179	4,034	5,592	5,307
2021	524	2,765	70,671	66,431	3,544	119,405	64,821	3,129	6,083	5,787
2022	539	2,823	84,039	80,892	3,258	123,081	67,970	3,811	6,212	5,881

Source: MoBSE / PPARBD – Statistical Yearbook – 2021/2022

#### 5.3.2 UBE, Historical Trend Main Statistics School Indicators National Level, 2013-2022

Table 5.3.2: UBE, Historical Trend Main Statistics School Indicators National Level, 2013-2022

Year	UBE: Enr/Sch	UBE: Enr/Clrm	UBE: Enr/Class	UBE: Enr/Seat	UBE: Enr/Desk	UBE: %QT	UBE: PTR	UBE: PqTR	UBE: %Girls	UBE: %Rep
2013	277	51	43	1.6	1.6	87.6	30	34	50.0	3.5
2014	269	47	43	1.5	1.6	90.5	28	31	50.5	3.4
2015	250	46	42	1.5	1.6	90.5	24	26	50.6	4.5
2016	233	45	40	1.5	1.5	93.6	23	25	51.2	3.1
2017	236	45	40	1.5	1.6	94.5	22	24	52.4	3.3
2018	224	46	40	1.5	1.6	94.2	21	22	53.0	3.2
2019	217	46	40	1.5	1.7	95.3	20	21	53.1	3.7
2020	221	45	40	1.6	1.7	94.9	20	21	53.9	3.6
2021	228	43	34	1.7	1.8	95.1	20	21	54.3	2.6
2022	228	44	38	1.5	1.5	94.7	20	21	55.2	3.1

Source: MoBSE / PPARBD – Statistical Yearbook – 2021/2022

### 5.3.3 UBE, 2022 - Global Figures - National Level

Table 5.3.3: UBE, 2022 - Global Figures - National Level

Local Management	UBE Schools	Perm. Classrooms	Total Seats	Total Desks	Total Classes	Total Enrolment	Total Girls	Total Repeaters	Total Teachers	Qualified Teachers
<b>Public</b>										
Government	203	1,415	44,380	43,163	1,831	72,675	40,558	2,675	3,750	3,738
Grant-Aided	42	329	13,910	13,499	401	20,092	11,574	438	708	671
<b>Private</b>										
Private-Conv.	90	518	12,796	12,618	401	12,546	7,217	293	849	823
Madrasa	204	561	12,953	11,612	625	17,768	8,621	405	905	649
<b>National – Total</b>	<b>539</b>	<b>2,823</b>	<b>84,039</b>	<b>80,892</b>	<b>3,258</b>	<b>123,081</b>	<b>67,970</b>	<b>3,811</b>	<b>6,212</b>	<b>5,881</b>

Source: MoBSE / PPARBD – Statistical Yearbook – 2021/2022

### 5.3.4 UBE, 2022 - Enrolment - By Grade & Gender

Table 5.3.4: UBE, 2022 - Enrolment - By Grade & Gender – National level

Local Management	Grade 7			Grade 8			Grade 9			Total	Total	Total
	#Boys Enrol.	#Girls Enrol.	#Total Enrol.	#Boys Enrol.	#Girls Enrol.	#Total Enrol.	#Boys Enrol.	#Girls Enrol.	#Total Enrol.	#Boys Enrol.	#Girls Enrol.	#Total Enrol.
<b>Public</b>												
Government	12,658	15,557	28,215	10,786	13,830	24,616	8,673	11,171	19,844	32,117	40,558	72,675
Grant-Aided	3,124	4,181	7,305	2,862	3,916	6,778	2,532	3,477	6,009	8,518	11,574	20,092
<b>Private</b>												
Private-Conv.	1,980	2,702	4,682	1,678	2,342	4,020	1,671	2,173	3,844	5,329	7,217	12,546
Madrasa	3,769	3,523	7,292	3,039	2,858	5,897	2,339	2,240	4,579	9,147	8,621	17,768
<b>National - Total</b>	<b>21,531</b>	<b>25,963</b>	<b>47,494</b>	<b>18,365</b>	<b>22,946</b>	<b>41,311</b>	<b>15,215</b>	<b>19,061</b>	<b>34,276</b>	<b>55,111</b>	<b>67,970</b>	<b>123,081</b>

Source: MoBSE / PPARBD – Statistical Yearbook – 2021/2022



### 5.3.5 UBE, 2022 - Enrolment - By Age & Gender

Table 5.3.5: UBE, 2022 - Enrolment - By Age & Gender

Local Management/ Gender	< 13 years	13 years	14 years	15 years	16 years	17 years	18 years	> 18 years	National- Total
<b>Public</b>									
<b>Government</b>	1,662	6,911	14,747	17,565	14,211	8,868	5,163	3,548	72,675
Boys	938	3,903	8,381	9,849	7,985	4,962	2,828	1,712	40,558
Girls	724	3,008	6,366	7,716	6,226	3,906	2,335	1,836	32,117
<b>Grant-Aided</b>	346	2,412	4,235	4,645	4,422	2,384	1,076	572	20,092
Boys	226	1,388	2,518	2,788	2,520	1,298	560	276	11,574
Girls	120	1,024	1,717	1,857	1,902	1,086	516	296	8,518
<b>Private</b>									
<b>Private-Conv.</b>	803	2,045	2,985	3,008	1,988	979	454	284	12,546
Boys	488	1,237	1,770	1,731	1,094	502	234	161	7,217
Girls	315	808	1,215	1,277	894	477	220	123	5,329
<b>Madrassa</b>	566	2,137	3,505	3,414	2,990	2,255	1,632	1,269	17,768
Boys	250	1,099	1,695	1,756	1,510	1,089	729	493	8,621
Girls	316	1,038	1,810	1,658	1,480	1,166	903	776	9,147
<b>National - Total</b>	<b>3,377</b>	<b>13,505</b>	<b>25,472</b>	<b>28,632</b>	<b>23,611</b>	<b>14,486</b>	<b>8,325</b>	<b>5,673</b>	<b>123,081</b>

Source: MoBSE / PPARBD – Statistical Yearbook – 2021/2022

5.3.6 UBE, 2022 - Special Needs Children - By Grade & Gender - National Level

Table 5.3.6: UBE, 2022 - Special Needs Children - By Grade & Gender - National Level

Local Management	Grade 7		Grade 7 Total	Grade 8		Grade 8 Total	Grade 9		Grade 9 Total	Total
	#Boys Sp. Needs	#Girls Sp. Needs		#Boys Sp. Needs	#Girls Sp. Needs		#Boys Sp. Needs	#Girls Sp. Needs		
<b>Public</b>										
Vision	133	194	327	105	155	260	97	119	216	803
Hearing	69	73	142	67	64	131	66	73	139	412
Speaking	29	31	60	10	30	40	24	13	37	137
Physical	50	35	85	26	20	46	30	27	57	188
Mental	22	23	45	22	33	55	21	33	54	154
Other	24	54	78	17	24	41	13	31	44	163
Multiple Impair.	11	8	19	6	8	14	15	12	27	60
<b>Private</b>										
Vision	50	66	116	38	87	125	46	63	109	350
Hearing	10	10	20	10	9	19	4	8	12	51
Speaking	11	2	13	2	2	4	4	1	5	22
Physical	10	10	20	11	9	20	13	8	21	61
Mental	4	3	7	2	3	5	1	3	4	16
Other	13	4	17	3	5	8	4	6	10	35
Multiple Impair.	4	1	5	2	1	3	5	1	6	14
<b>Total</b>	<b>440</b>	<b>514</b>	<b>954</b>	<b>321</b>	<b>450</b>	<b>771</b>	<b>343</b>	<b>398</b>	<b>741</b>	<b>2,466</b>

Source: MoBSE / PPARBD – Statistical Yearbook – 2021/2022

### 5.3.7 UBE, 2022 - Teaching Staff - By Qualification & Gender - National Level

Table 5.3.7: UBE, 2022 - Teaching Staff - By Qualification & Gender - National Level

Local Management	Male Teachers	Female Teachers	Total Teachers	%Female Teachers	Total Qualified	% Total Qualified	Male Qualified	Female Qualified	% Female Qualified (Out of All Qualified)	% Female Qualified (Out. of All Female)
<b>Public</b>										
Government	2,479	1,271	3,750	33.9	3,738	99.7	2,473	1,265	33.8	99.5
Grant-Aided	549	159	708	22.5	671	94.8	523	148	22.1	93.1
<b>Private</b>										
Private-Conv.	700	149	849	17.6	823	96.9	676	147	17.9	98.7
Madrasa	764	141	905	15.6	649	71.7	554	95	14.6	67.4
<b>National - Total</b>	<b>4,492</b>	<b>1,720</b>	<b>6,212</b>	<b>27.7</b>	<b>5,881</b>	<b>94.7</b>	<b>4,226</b>	<b>1,655</b>	<b>28.1</b>	<b>96.2</b>

Source: MoBSE / PPARBD – Statistical Yearbook – 2021/2022

### 5.3.8 UBE, 2022 - Teaching Staff - By Qualification & Nationality - National Level

Table 5.3.8: UBE, 2022 - Teaching Staff - By Qualification & Nationality - National Level

Local Management	No. of Total Teachers		Share of Total Teachers		No. of Qualified Teachers		Share of Qualified Teachers	
	Gambians	Non-Gambians	Gambians	Non-Gambians	Gambians	Non-Gambians	Gambians	Non-Gambians
<b>Public</b>								
Government	3,648	102	97.3	2.7	3,638	100	97.3	2.7
Grant-Aided	657	51	92.8	7.2	620	51	92.4	7.6
<b>Private</b>								
Private-Conv.	566	283	66.7	33.3	547	276	66.5	33.5
Madrasa	885	20	97.8	2.2	633	16	97.5	2.5
<b>National - Total</b>	<b>5,756</b>	<b>456</b>	<b>92.7</b>	<b>7.3</b>	<b>5,438</b>	<b>443</b>	<b>92.5</b>	<b>7.5</b>

Source: MoBSE / PPARBD – Statistical Yearbook – 2021/2022

## 5.4 Senior Secondary Education (SSE)

### 5.4.1 SSE – Historical Trend - Global Figures - National Level, 2012-2022

Table 5.4.1: SSE, Historical Trend - Global Figures - National Level, 2012-2022

Year	SSE Schools	Perm. Classrooms	Total Seats	Total Desks	Total Classes	Total Enrolment	Total Girls	Total Repeaters	Total Teachers	Qualified Teachers
2012	100	803	26,549	25,173	876	40,533	19,227	1,192	1,226	1,171
2013	120	1,027	34,039	31,812	1,038	45,041	21,802	1,641	1,590	1,496
2014	134	1,156	38,487	36,602	1,117	49,113	24,006	1,734	1,971	1,844
2015	145	1,182	42,605	39,909	1,228	51,225	25,613	2,360	2,099	1,974
2016	160	1,253	44,111	42,160	1,302	56,001	28,629	1,972	2,312	2,218
2017	171	1,319	48,228	45,071	1,415	60,310	31,781	1,879	2,430	2,338
2018	189	1,425	51,247	46,560	1,471	64,957	34,696	2,717	2,623	2,536
2019	193	1,504	52,528	46,991	1,537	69,315	36,982	2,979	2,802	2,719
2020	201	1,526	53,195	47,238	1,646	73,563	39,550	2,395	2,957	2,873
2021	213	1,571	53,151	47,328	2,108	76,537	42,045	2,470	3,326	3,211
2022	222	1,686	57,001	52,166	1,886	78,706	44,250	2,465	3,486	3,394

Source: MoBSE / PPARBD – Statistical Yearbook – 2021/2022

#### 5.4.2 SSE, Historical Trend - Main Statistics - School Indicators - National Level, 2012-2022

Table 5.4.2: SSE, Historical Trend - Main Statistics - School Indicators - National Level, 2012-2022

Year	SSE: Enr/School	SSE: Enr/Classroom	SSE: Enr/Class	SSE: Enr/Seat	SSE: Enr/Desk	SSE: %QT	SSE: PTR	SSE: PqTR	SSE: %Girls	SSE: %Repeaters
2012	405	50	46	1.5	1.6	95.5	33	35	47.4	2.9
2013	375	44	43	1.3	1.4	94.1	28	30	48.4	3.6
2014	367	42	44	1.3	1.3	93.6	25	27	48.9	3.5
2015	353	43	42	1.2	1.3	94.0	24	26	50.0	4.6
2016	350	45	43	1.3	1.3	95.9	24	25	51.1	3.5
2017	353	46	43	1.3	1.3	96.2	25	26	52.7	3.1
2018	344	46	44	1.3	1.4	96.7	25	26	53.4	4.2
2019	359	46	45	1.3	1.5	97.0	25	25	53.4	4.3
2020	366	48	45	1.4	1.6	97.2	25	26	53.8	3.3
2021	359	49	36	1.4	1.6	96.5	23	24	54.9	3.2
2022	355	47	42	1.4	1.5	97.4	23	23	56.2	3.1

Source: MoBSE / PPARBD – Statistical Yearbook – 2021/2022

#### 5.4.3 SSE, 2022 - Global Figures - National Level

Table 5.4.3: SSE, 2022 - Global Figures - National Level

Local Management	SSE Schools	Perm. Classrooms	Total Seats	Total Desks	Total Classes	Total Enrolment	Total Girls	Total Repeaters	Total Teachers	Qualified Teachers
<b>Public</b>										
Government	73	494	14,958	13,153	625	23,168	13,470	706	1,180	1,175
Grant-Aided	45	588	25,100	22,387	758	36,972	20,701	1,493	1,260	1,226
<b>Private</b>										
Private-Conv.	42	384	11,166	10,855	292	9,789	6,048	204	558	542
Madrasa	62	220	5,777	5,771	211	8,777	4,031	62	488	451
<b>National - Total</b>	<b>222</b>	<b>1,686</b>	<b>57,001</b>	<b>52,166</b>	<b>1,886</b>	<b>78,706</b>	<b>44,250</b>	<b>2,465</b>	<b>3,486</b>	<b>3,394</b>

Source: MoBSE / PPARBD – Statistical Yearbook – 2021/2022

#### 5.4.4 SSE, 2021 - Enrolment - By Grade & Gender - National Level

Table 5.4.4: SSE, 2022 - Enrolment - By Grade & Gender - National Level

	Grade 10			Grade 11			Grade 12			Total	Total	Total
	#Boys Enrol.	#Girls Enrol.	#Total Enrol.	#Boys Enrol.	#Girls Enrol.	#Total Enrol.	#Boys Enrol.	#Girls Enrol.	#Total Enrol.	#Boys Enrol.	#Girls Enrol.	#Total Enrol.
<b>Local Management</b>												
<b>Public</b>												
Government	3,851	5,649	9,500	3,265	4,385	7,650	2,582	3,436	6,018	9,698	13,470	23,168
Grant-Aided	6,276	7,845	14,121	5,520	7,188	12,708	4,475	5,668	10,143	16,271	20,701	36,972
<b>Private</b>												
Private-Conv.	1,488	2,393	3,881	1,292	1,969	3,261	961	1,686	2,647	3,741	6,048	9,789
Madrasa	1,822	1,587	3,409	1,483	1,387	2,870	1,441	1,057	2,498	4,746	4,031	8,777
<b>National - Total</b>	<b>13,437</b>	<b>17,474</b>	<b>30,911</b>	<b>11,560</b>	<b>14,929</b>	<b>26,489</b>	<b>9,459</b>	<b>11,847</b>	<b>21,306</b>	<b>34,456</b>	<b>44,250</b>	<b>78,706</b>

Source: MoBSE / PPARBD – Statistical Yearbook – 2021/2022

#### 5.4.5 SSE, 2022 - Enrolment - By Age & Gender - National Level

Table 5.4.5: SSE, 2022 - Enrolment - By Age & Gender - National Level

Local Management/ Gender	< 16 years	16 years	17 years	18 years	19 years	20 years	21 years	> 21 years	National- Total
<b>Public</b>									
<b>Government</b>	<b>673</b>	<b>2,087</b>	<b>4,665</b>	<b>5,660</b>	<b>4,600</b>	<b>2,842</b>	<b>1,571</b>	<b>1,070</b>	<b>23,168</b>
Boys	447	1,307	2,855	3,334	2,648	1,521	872	486	13,470
Girls	226	780	1,810	2,326	1,952	1,321	699	584	9,698
<b>Grant-Aided</b>	<b>878</b>	<b>4,400</b>	<b>9,235</b>	<b>9,372</b>	<b>6,428</b>	<b>3,639</b>	<b>1,907</b>	<b>1,113</b>	<b>36,972</b>
Boys	592	2,586	5,378	5,270	3,502	1,918	944	511	20,701
Girls	286	1,814	3,857	4,102	2,926	1,721	963	602	16,271
<b>Private</b>									
<b>Madrasa</b>	<b>265</b>	<b>861</b>	<b>1,630</b>	<b>1,528</b>	<b>1,515</b>	<b>1,463</b>	<b>885</b>	<b>630</b>	<b>8,777</b>
Boys	145	409	749	722	727	645	399	235	4,031
Girls	120	452	881	806	788	818	486	395	4,746
<b>Private-Conv.</b>	<b>636</b>	<b>1,370</b>	<b>2,129</b>	<b>1,977</b>	<b>1,640</b>	<b>950</b>	<b>571</b>	<b>516</b>	<b>9,789</b>
Boys	411	854	1,388	1,199	1,022	588	328	258	6,048
Girls	225	516	741	778	618	362	243	258	3,741
<b>National - Total</b>	<b>2,452</b>	<b>8,718</b>	<b>17,659</b>	<b>18,537</b>	<b>14,183</b>	<b>8,894</b>	<b>4,934</b>	<b>3,329</b>	<b>78,706</b>

Source: MoBSE / PPARBD – Statistical Yearbook – 2021/2022

5.4.6 SSE, 2022 - Special Needs Children - By Grade & Gender - National Level

Table 5.4.6: SSE, 2022 - Special Needs Children - By Grade & Gender - National Level

Local Management	Grade 10		Grade 10 Total	Grade 11		Grade 11 Total	Grade 12		Grade 12 Total	Total
	#Boys Sp. Needs	#Girls Sp. Needs		#Boys Sp. Needs	#Girls Sp. Needs		#Boys Sp. Needs	#Girls Sp. Needs		
<b>Public</b>										
Vision	60	126	186	65	110	175	59	101	160	521
Hearing	27	37	64	27	33	60	12	16	28	152
Speaking	12	5	17	7	10	17	10	9	19	53
Physical	17	21	38	13	13	26	9	9	18	82
Mental	13	28	41	5	16	21	6	11	17	79
Other	6	36	42	2	19	21	7	9	16	79
Multiple Impair.	9	8	17	4	9	13	7	15	22	52
<b>Private</b>										
Vision	28	32	60	13	19	32	36	21	57	149
Hearing	3	7	10	1	4	5	4	0	4	19
Speaking	1	0	1	0	0	0	1	2	3	4
Physical	2	3	5	3	0	3	14	1	15	23
Mental	2	4	6	1	0	1	0	1	1	8
Other	10	8	18	1	8	9	9	6	15	42
Multiple Impair.	3	2	5	0	0	0	0	0	0	5
<b>Total</b>	<b>193</b>	<b>317</b>	<b>510</b>	<b>142</b>	<b>241</b>	<b>383</b>	<b>174</b>	<b>201</b>	<b>375</b>	<b>1,268</b>

Source: MoBSE / PPARBD – Statistical Yearbook – 2021/2022

#### 5.4.7 Teaching Staff - By Qualification & Gender - National Level

Table 5.4.7: SSE, 2022 - Teaching Staff - By Qualification & Gender - National Level

Local Management	Male Teachers	Female Teachers	Total Teachers	% Female Teachers	Total Qualified	% Total Qualified	Male Qualified	Female Qualified	% Female Qualified (Out of All Qualified)	% Female Qualified (Out of All Female)
<b>Public</b>										
Government	959	221	1,180	18.7	1,175	99.6	956	219	18.6	99.1
Grant-Aided	1,117	143	1,260	11.3	1,226	97.3	1,084	142	11.6	99.3
<b>Private</b>										
Private-Conv.	471	87	558	15.6	542	97.1	456	86	15.9	98.9
Madrasa	457	31	488	6.4	451	92.4	422	29	6.4	93.5
<b>National - Total</b>	<b>3,004</b>	<b>482</b>	<b>3,486</b>	<b>13.8</b>	<b>3,394</b>	<b>97.4</b>	<b>2,918</b>	<b>476</b>	<b>14.0</b>	<b>98.8</b>

Source: MoBSE / PPARBD – Statistical Yearbook – 2021/2022

#### 5.4.8 Teaching Staff - By Qualification & Nationality - National Level

Table 5.4.8: SSE, 2022 - Teaching Staff - By Qualification & Nationality - National Level

Local Management	Number Total Teachers		% Share of Total Teachers		Number Qualified Teachers		% Share of Qualified Teachers	
	Gambians	Non-Gambians	Gambians	Non-Gambians	Gambians	Non-Gambians	Gambians	Non-Gambians
<b>Public</b>								
Government	1,138	42	96.4	3.6	1,133	42	96.4	3.6
Grant-Aided	1,077	183	85.5	14.5	10,46	180	85.3	14.7
<b>Private</b>								
Private-Conv.	321	237	57.5	42.5	307	235	56.6	43.4
Madrasa	474	14	97.1	2.9	437	14	96.9	3.1
<b>National - Total</b>	<b>3,010</b>	<b>476</b>	<b>86.3</b>	<b>13.7</b>	<b>2,923</b>	<b>471</b>	<b>86.1</b>	<b>13.9</b>

Source: MoBSE / PPARBD – Statistical Yearbook – 2021/2022



## Chapter 6 Health and Nutrition

### 6.1 Health Facilities and Personnel

Table 6.1.1: Number of service delivery points, The Gambia, 2022

REGION	CRR	URR	LRR	NBWR	NBER	WHR1	WHR2	Total
Teaching Hospital	0	0	0	0	0	1	0	1
General Hospital	1	0	0	0	1	2	1	5
Specialized Hospital	0	0	0	0	0	1	0	1
District Hospital	0	1	1	1	0	0	1	4
Major Health Centre	1	1	1	1	0	1	1	6
Minor Health Centre	7	9	4	3	6	6	5	40
Specialized RMNCAH Clinics	1	0	0	0	1	2	0	4
Community clinic/Health post	14	7	10	11	6	7	18	73
Private Clinic	0	2	1	1	0	20	6	30
NGOs Clinic	2	2	3	1	0	4	6	18
Service Clinics	1	2	1	0	1	7	0	12
No of outreach Clinics	80	66	42	45	33	18	37	321
No of Based Clinics	23	22	14	13	15	142	44	273
No of PHC Circuit	34	18	15	16	14	8	14	119
PHC Villages	307	145	102	116	127	29	116	942
No of non PHC villages	339	223	45	36	35	34	205	947

Source: Health Management Information Systems (HMIS) 2022

Table 6.1.2: Number and percentage of PHC villages by health region, The Gambia, 2022

Region	Circuit	No. of PHC villages	No. of Non PHC villages	Total Villages	Percent
WHR1	8	29	34	63	46.0
WHR2	14	116	205	321	36.1
LRR	15	102	45	147	69.4
NBWR	16	116	36	152	76.3
NBER	14	127	35	162	78.4
CRR	34	307	369	676	45.4
URR	18	145	223	368	39.4
<b>National</b>	<b>119</b>	<b>942</b>	<b>947</b>	<b>1,889</b>	<b>49.9</b>

Source: Health Management Information Systems (HMIS) 2022

## 6.2 Expenditure on Health

### 6.2.1 Summary of Health Indicators, The Gambia, 2021

Table 6.2.1: Number and percentage of PHC villages by health region, The Gambia, 2022

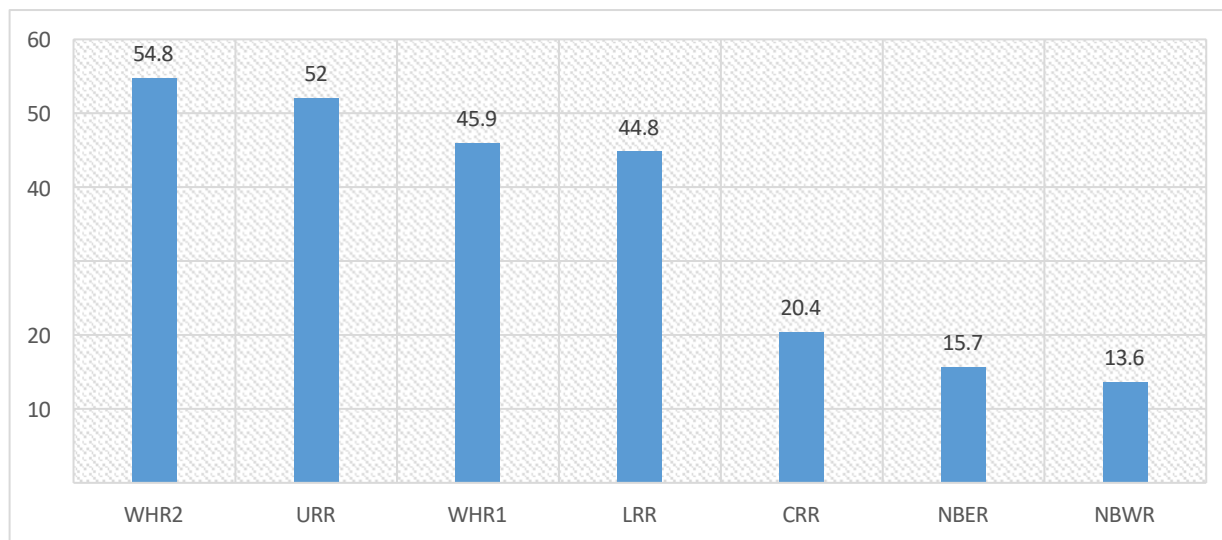
Indicators	Value	Source
OPD utilization rate	68.2%	HMIS, 2022
Institutional maternal mortality rate per 100,000	188	HMIS, 2022
Proportion of pregnant women attending antenatal clinics who received three doses of intermittent preventive treatment (IPTp) for malaria	55.5%	HMIS, 2022
Percentage of ANC first trimester visits	37.1%	HMIS, 2022
Percentage of institutional deliveries	98%	HMIS, 2022
Caesarean section rate	6.9%	HMIS, 2022
BCG immunization coverage	83%	HMIS, 2022
Penta3 immunization coverage	79%	HMIS, 2022
Measles immunization coverage	74%	HMIS, 2022
Penta Dropout rate (Penta 1 versus Penta3)	7%	HMIS, 2022
Percentage of deliveries conducted by skilled health attendant in health facilities	91.2%	HMIS, 2022
Malaria incidence per 1000 population	43.6	HMIS, 2022
Utilization of public health facilities	%	HMIS, 2022
Contraceptive prevalence Rate among currently married women age 15-49	19%	DHS, 2019-2020
Percentage of household members with an improved drinking water source on premises, whose source water was tested and free of E. coli and available when needed	33.8%	MICS 2018
Percentage of household members using improved sanitation facilities which are not shared	47.1%	MICS 2018
Percent of pregnant women with severe anemia	1%	DHS, 2019-2020
Percentage of women of reproductive age with BMI < 18.5	14%	DHS, 2019-2020
Exclusive breastfeeding (<1 month)	75%	DHS, 2019-2020
Prevalence of early initiation breastfeeding	36%	DHS, 2019-2020
Neonatal Mortality Rate	29/1000	DHS, 2019-2020
Under five years mortality	56/1000	DHS, 2019-2020
Child mortality	15/1000	DHS, 2019-2020
Infant mortality rate	42/1000	DHS, 2019-2020
Maternal mortality ratio (MMR)	289/100,000	DHS, 2019-2020
Pregnancy-related mortality ratio (PRMR)	320/100,000	DHS, 2019-2020
Prevalence of Malnutrition < 5 years	7.2	DHS, 2019-2020
Prevalence of stunting < 5 years	17.5	DHS, 2019-2020
Under five years wasted	5%	DHS, 2019-2020
Under five years underweight	12%	DHS, 2019-2020

Under five years overweight	2%	DHS, 2019-2020
Inpatient malaria deaths per 100,000 persons per year	2	HMIS, 2022
Confirmed malaria cases (microscopy or RDT) per 1000 persons per year	251	HMIS, 2021
Percentage of ITN usage	38%	DHS, 2019-2020
Percentage of households with at least one ITN and/or IRS during the last 12 months	82.4%	MICS 2018
Completeness rate of Health Management Information System reporting.	83.4%	HMIS, 2022
Timeliness rate of Health Management Information System reporting.	75%	HMIS, 2022
Doctor population ratio		HMIS, 2022
Nurse population ratio		HMIS, 2022
Percentage of live births registered in the year	%	HMIS, 2022
Percentage of Out of Pockets (OOP) expenditure on health	24.55%	NHA 2016/2017
General Government Expenditure (GGE) on health as a percentage of total government expenditure	9.52%	NHA 2016/2017
General government Expenditure on health as a percentage of total Expenditure on health	30.65%	NHA 2016/2017
Per capita total expenditure on health	\$28.84	NHA 2016/2017

Source: Health Management Information Systems (HMIS) 2022

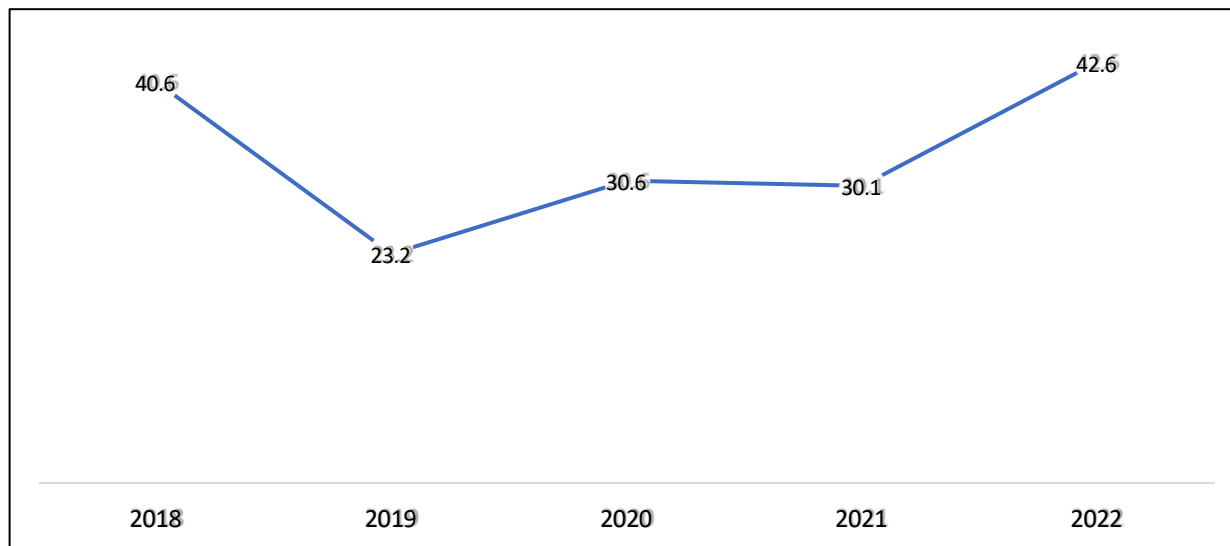
### 6.3 Malaria

Figure 6.3.1: Malaria Incidence per 1,000 population, The Gambia 2022



Source: Health Management Information Systems (HMIS) 2022

Figure 6.3.2: Reported Malaria cases per 1000 population from 2018 – 2022.



Source: Health Management Information Systems (HMIS) 2022

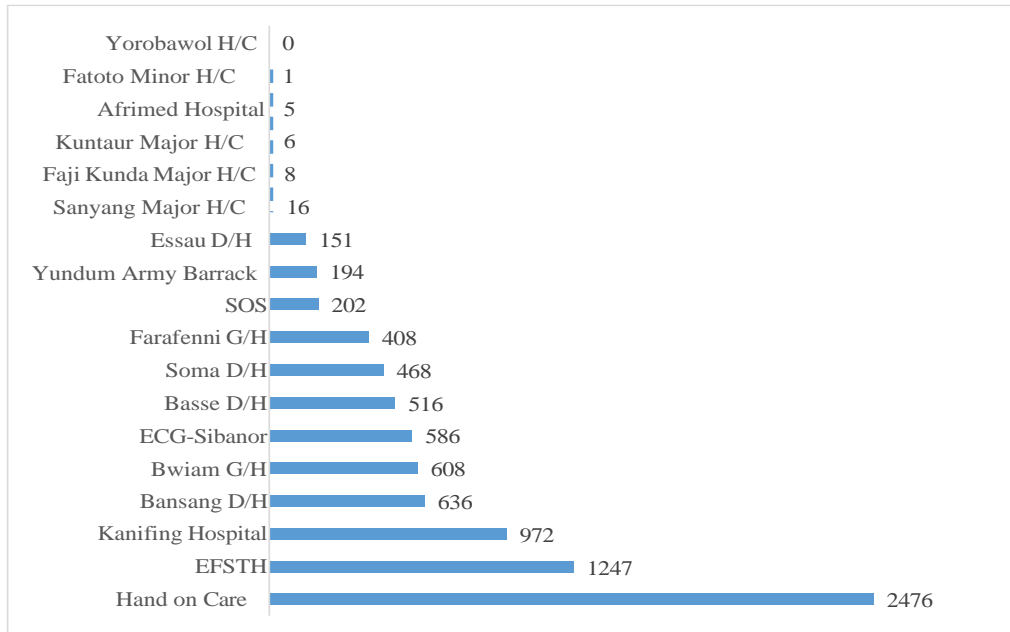
## 6.4 HIV & AIDS

Table 6.4.1: HIV Counselling and Testing in General Population January – December 2022

Region	Pre test	Tested	Post Tested	HIV-1	HIV -2	Dual HIV1&2)	Total Positive (%)	Known Status	Linkage to care (%)
CRR	5909	5900	5875	280	29	18	327	106	166 (51%)
LRR	1541	1525	1523	99	12	1	112	38	95 (85%)
NBE	3383	3374	3373	54	5	0	59	18	71 (120%)
NBW	732	717	714	38	2	0	40	12	38 (95%)
URR	2519	2489	2488	130	5	4	139	15	109 (78%)
WCR-1	20762	20692	20672	1032	84	19	1135	302	666 (59%)
WCR-2	7335	7235	7233	673	81	12	766	673	505 (66%)
<b>National</b>	<b>42181</b>	<b>41932</b>	<b>41878</b>	<b>2306</b>	<b>218</b>	<b>54</b>	<b>2578</b>	<b>1164</b>	<b>1650 (64%)</b>

Source: Health Management Information Systems (HMIS) 2022

Figure 6.4.1: Currently on treatment by ART site 2022 December

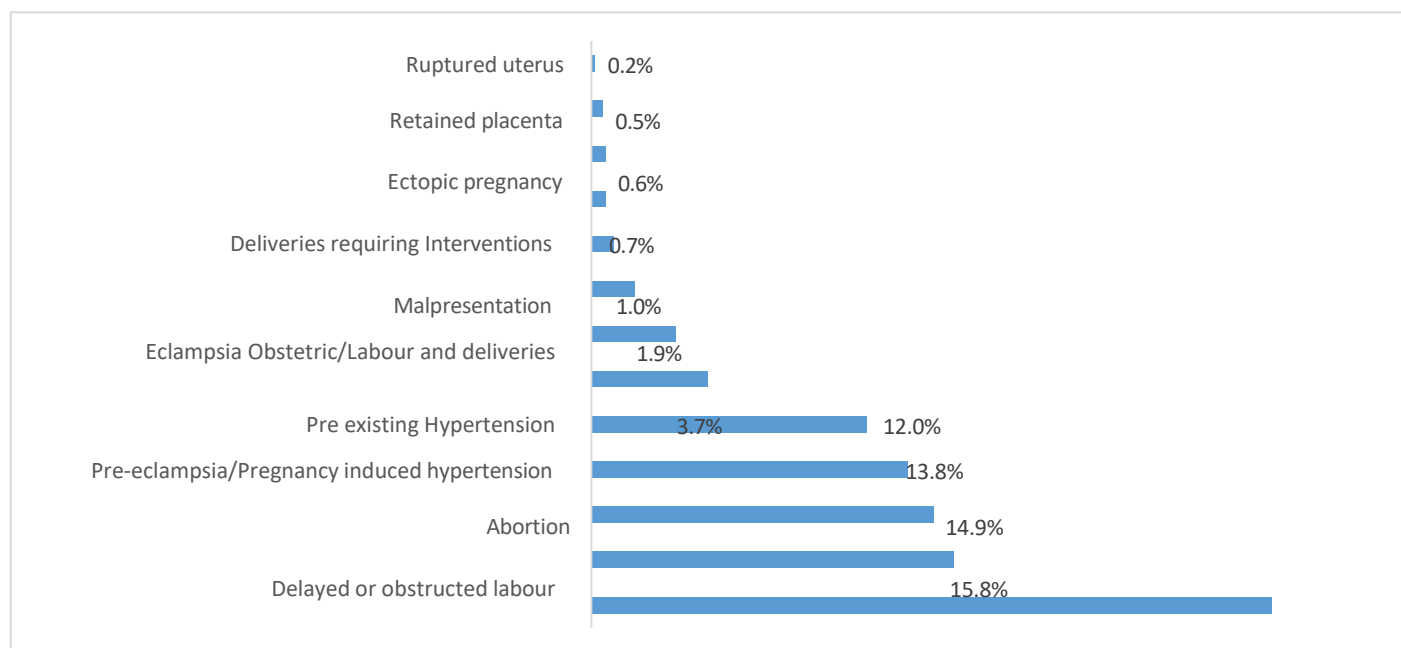


Source: Health Management Information Systems (HMIS) 2022



## 6.5 Deliveries

Figure 6.5.1 Percentage of obstetric, labour and delivery complications recorded at health facilities, The Gambia, 2022



Source: Health Management Information Systems (HMIS) 2022

Table 6.5.1: Number of deliveries reported by regions in 2022

Region	Total deliveries	Total health facility deliveries	Skilled deliveries	Community deliveries
CRR	9959	9757	9722	202
LRR	3478	3196	3126	282
NBER	5517	5435	5015	82
NBWR	4923	4762	4684	161
URR	11653	11137	9574	516
WHR1	27431	27376	24143	55
WHR2	14635	14374	13096	261
<b>National</b>	<b>77596</b>	<b>76037</b>	<b>69360</b>	<b>1559</b>

Source: Health Management Information Systems (HMIS) 2022

Table 6.5.2: Number of deliveries by type conducted at the health facilities in The Gambia, 2022

Region	Spontaneous Delivery	Caesarean Sections	Breech	Induced Vaginal Delivery	Other Delivery	Vacuum Delivery
CRR	4308	488	139	13	46	42
LRR	1396	0	55	10	40	5
NBER	2408	341	37	8	10	28
NBWR	1558	52	83	0	39	19
URR	4439	259	134	1	5	77
WR1	10657	3344	450	107	154	393
WR2	6487	788	365	10	218	158
<b>National</b>	<b>31253</b>	<b>5272</b>	<b>1263</b>	<b>149</b>	<b>512</b>	<b>722</b>

Source: Health Management Information Systems (HMIS) 2022

## 6.6 Deaths

Table 6.6.1: Deaths at Facility by Region, The Gambia, 2022

Region	Deaths child 5-14 Years	Deaths child < 5 Years	Deaths over 14 years	Infant death	Maternal death	Neonatal death	Total
CRR	12	44	185	28	18	152	439
LRR	4	4	18	1	0	13	40
NBER	16	14	189	9	4	87	319
NBWR	5	4	31	2	2	10	54
URR	1	20	62	8	6	14	111
WHR1	60	198	2,086	258	55	762	3,419
WHR2	31	8	221	1	6	3	270
<b>National</b>	<b>129</b>	<b>292</b>	<b>2,792</b>	<b>307</b>	<b>91</b>	<b>1,041</b>	<b>4,652</b>

Source: Health Management Information Systems (HMIS) 2022

## 6.7 Family Planning

Table 6.7.1: Number and Percentage of Family Planning Services New Acceptors and revisits offered at Health Facilities, The Gambia 2022

FAMILY PLANNING METHODS	NEW ACCEPTORS			REVISIT S			TOTAL
	< 15 years	15-24 years	> 24 years	< 15 years	15-24 years	> 24 years	
BILATERAL TUBAL LIGATION	10	8	520	0	0	10	548
DEPO	67	8718	18128	145	18083	39045	84,186
NORLEVO	6	279	449	0	48	181	963
FEMALE CONDOM	0	0	79	0	5	14	98
FOAM	0	0	0	0	0	0	0
FP IUCD		212	789		13	75	1,089
FP IMPLANON	45	6628	13590		150	215	20,628
JADELLE IMPLANT	2	241	1414		76	215	1,948
MALE CONDOM	42	2381	5773	30	1457	2693	12,376
MARVELON		15	19	4	9	45	92
MICROGYNON	16	1722	4022	45	4070	9197	19,072
MICROLUT	4	283	609	8	513	872	2,289
NEOGYNON	0	3	2	0	84	68	157
NORIGYNON	0	0	3	0	12	35	50
NORISTAT	2	672	1610	4	1111	2651	6,050
FP OTHER	0	255	400	2	156	262	1,075
OTHER INJECTABLES	0	0	0	0	1	6	7
OTHER PILLS	0	6	6	0	9	19	40
VSC	0	14	19	0	19	29	81
VASECTOMY	0	2	24	0	0	0	26

Source: Health Management Information Systems (HMIS) 2022

## 6.8 Immunization

Table 6.8.1: Vaccination coverage by region in The Gambia, 2022

REGION	COMMULATIVE VACCINATIONS AND COVERAGE 2022									
	BCG		PENTA1		Penta 3		MR1		MR2	
	VACC	Coverage %	Vaccination	Coverage %	Vaccination	Coverage %	Vaccination	Coverage %	Vaccination	Coverage %
CRR	9500	99.0	9467	102.0	9032	98.0	8678	94.0	7198	78.0
LRR	3431	107.0	3488	112.0	3210	103.0	3085	99.0	2568	83.0
NBER	4754	98.0	4721	101.0	4502	96.0	4351	93.0	3233	69.0
NBWR	4378	90.0	4692	100.0	4627	98.0	4433	94.0	3763	80.0
URR	9507	89.0	9711	94.0	9313	91.0	8733	85.0	7082	69.0
WHR1	28522	78%.	27414	78.0	24629	70.0	22119	63.0	13425	38.0
WHR2	14309	70.0	14477	73.0	13494	68.0	12586	64.0	8305	42.0
<b>National</b>	<b>74401</b>	<b>83.0</b>	<b>73970</b>	<b>85%</b>	<b>68807</b>	<b>79.0</b>	<b>63985</b>	<b>74.0</b>	<b>45574</b>	<b>52.0</b>

Source: Health Management Information Systems (HMIS) 2022

## 6.9 Noncommunicable Diseases

Table 6.9.1: Number of Noncommunicable Diseases Episodes and Conditions seen at OPD by Gender, The Gambia 2022.

<b>Non-communicable diseases, major conditions</b>	<b>Male</b>	<b>Female</b>	<b>Total</b>	<b>Percent</b>
Hypertension	16252	34414	50666	64.0
Diabetes	5794	10756	16550	21.0
Asthma	2755	3650	6405	8.0
Sickle cell	893	1062	1955	2.0
Cardiac disorder	661	908	1569	2.0
women screen for cervical cancer		1151	1151	1.0
Cardiac Disorder follow up	291	427	718	1.0
Women manage for cervical cancer		259	259	0.0
Cervical cancer		184	184	0.0
Liver Cancer (liver/Hep)	24	30	54	0.0
Women Positive for Cervical Cancer Lesions		52	52	0.0
Other cancer	24	27	51	0.0
Breast cancer	-	41	41	0.0
Lung cancer	15	9	24	0.0
Prostate cancer	22	1	23	0.0
Women Treated for Cervical Lesions	-	23	23	0.0
<b>National</b>	<b>26731</b>	<b>52994</b>	<b>79725</b>	<b>100.0</b>

Source: Health Management Information Systems (HMIS) 2022

Table 6.9.2: Number of Non-Communicable Diseases Related Deaths by Gender, The Gambia 2022

<b>Non-communicable diseases, major conditions</b>	<b>Male</b>	<b>Female</b>	<b>Total</b>	<b>Percent</b>
Hypertension	43	53	96	40.0
Asthma	2	0	2	1.0
Breast cancer		2	2	1.0
Cardiac disorder	37	29	37	15.0
Cervical cancer		12	12	5.0
Diabetes	26	22	48	20.0
Liver Cancer (liver/Hep)	15	6	14	6.0
Other cancer	6	0	6	2.0
Prostate cancer	4		4	2.0
Renal Failure follow up	1	1	2	1.0
Renal failure	7	10	17	7.0
Sickle cell	1	0	1	0.0
<b>National</b>	<b>142</b>	<b>135</b>	<b>241</b>	<b>100.0</b>

Source: Health Management Information Systems (HMIS) 2022

## 6.10 Mental Disorder

Table 6.10.1: Trend of outpatient mental disorder cases last five years

Disease condition	2018	2019	2020	2021	2022
Epilepsy	6,113	8,681	10,289	10,094	10,405
Schizophrenia	4,248	6,165	6,574	6,218	4,328
Drug induced psychosis	2,741	3,192	3,443	2,941	2,331
Organic psychosis	1,030	1,577	1,756	1,535	1,421
Depression	255	672	482	396	569
Phobia	395	435	300	436	502
Anxiety disorder	322	369	526	580	424
Dementia the elderly	185	303	618	231	279
Mania	25	80	84	86	158
Other mental disorders	104	52	43	83	112
Child mental disorder	7	8	17	68	38
Pregnancy related mental disorders	10	11	29	17	30
Malaria related mental disorders	14	26	36	46	6

Source: Health Management Information Systems (HMIS) 2022

Table 6.10.2: Trend of mental disorder inpatient cases last five years

Disease condition	2018	2019	2020	2021	2022
Schizophrenia	0	11	211	109	223
Epilepsy	107	91	64	103	179
Drug induced psychosis	1	2	457	285	160
Organic psychosis	6	12	22	23	90
Mania	1	0	1	2	45
Depression	3	2	25	19	18
Anxiety disorder	3	3	6	1	14
Pregnancy related mental disorders	2	2	2	1	6
Dementia the elderly	3	5	0	6	6
Other mental disorders	0	0	0	0	4
Malaria related mental disorders	1	0	0	3	3
Phobia	0	0	0	1	2
Child mental disorder	1	0	0	0	2

Source: Health Management Information Systems (HMIS) 2022



## 6.11 Eye Conditions

Table 6.11.1: Number and percentage of major eye conditions reported in The Gambia, 2022

Eye conditions	OPD cases				Inpatient cases			
	Male	Female	Total	Percent	Male	Female	Total	Percent
Cataracts	3450	3903	7353	15.0	606	688	1294	75.0
Conjunctivitis	9172	11558	20730	43.0	11	6	17	1.0
Glaucoma	897	724	1621	3.0	0	0	0	0.0
Ophthalmia Neonatrum	419	369	788	2.0	1	3	4	0.0
Refractive error	846	834	1680	3.0	45	67	112	6.0
Trabut done				0.0	100	100	200	12.0
Trachoma	352	344	696	1.0	24	3	27	2.0
Trachoma treated	92	100	192	0.0	39	37	76	4.0
Trauma	324	247	571	1.0	1	0	1	0.0
Other eye conditions	6229	7345	13574	28.0	0	0	0	0.0
<b>National</b>	<b>22209</b>	<b>25921</b>	<b>48130</b>	<b>100.0</b>	<b>827</b>	<b>904</b>	<b>1731</b>	<b>100.0</b>

Source: Health Management Information Systems (HMIS) 2022

Table 6.11.2: Eye condition seen at outpatient department by region in |The Gambia, 2022

Disease condition	CRR	LRR	NBER	NBWR	URR	WHR1	WHR2
Conjunctivitis	3,529	1,132	1,636	1,039	2,585	7,969	2,840
Other eye conditions	2,948	1,346	837	1,830	1,621	1,234	3,758
Cataracts	2,159	273	341	528	1,049	1,623	1,380
Refractive error	76	60	181	19	77	545	722
Glaucoma	313	118	75	64	202	544	305
Trachoma treated	0	3	5	2	0	179	3
Ophthalmia Neonatrum	11	13	57	13	81	534	79
Trachoma	88	47	7	8	4	498	44
Trauma	150	24	14	24	46	216	97

Source: Health Management Information Systems (HMIS) 2022

## 6.12 Nutrition

Table 6.12.1: Nutritional Indicators 2022 by LGA The Gambia

LGA	Stunting	Wasting	U/weight	Exclusive Breast Feeding	Minimum Acceptable Diet	Minimum Dietary Diversity	Minimum Meal Frequency
Banjul	10.9	11.4	6.4	40.7	21.3	37.7	50.8
Kanifing	15.7	10.0	10.0	52.2	23.9	32.8	43.3
Brikama	22.9	4.5	7.8	68.0	11.7	31.2	42.9
Mansakonko	19.2	8.8	17.0	57.5	16.8	29.7	55.4
Kerewan	18.2	8.6	13.5	55.0	31.8	47.3	53.6
Janjanbureh	16.1	10.1	14.7	59.0	3.4	17.1	18.8
Kuntaur	21.7	9.4	16.4	60.0	9.6	41.3	20.2
Basse	19.4	5.2	10.3	72.0	10.3	22.7	38.1
<b>National</b>	<b>18.3</b>	<b>8.5</b>	<b>12.7</b>	<b>57.8</b>	<b>15.5</b>	<b>32.2</b>	<b>39.2</b>

Source: National Nutrition Agency (NaNA)