



REPUBLIC OF THE GAMBIA

## THE GAMBIA CONSUMER PRICE INDEX (CPI) March 2016



### CAUTION

The Gambia Bureau of Statistics is very pleased to deliver to users the new Consumer Price Index (CPI) based in 2004 that replace the previous one which was based in 1974. The CPI is published every month by the 15<sup>th</sup>.

	ALL ITEMS(NEW SERIES; 2004=100)	Weights	Mar-15	Dec-15	Jan-16	Feb-16	Mar-16	Changes in % over	
								1 month	Over 12 Months
	<b>OVERALL INDEX</b>	61841	162.64	171.82	172.41	173.32	174.10	0.45	7.05
01	Food and non-alcoholic beverages	33837	181.37	192.81	193.70	194.96	196.01	0.53	8.07
011	Food	32 914	182.84	194.55	195.45	196.73	197.80	0.54	8.18
0111	Bread & Cereals	7 891	176.17	189.25	189.51	191.01	192.26	0.66	9.13
0112	Meat	8 217	189.57	209.42	211.00	213.07	215.13	0.97	13.49
0113	Fish	2 226	148.26	159.55	161.02	162.58	163.73	0.71	10.43
0114	Milk, Cheese and Eggs	1 462	144.48	148.84	149.97	151.00	151.61	0.40	4.94
0115	Oils and fats	3 469	215.24	225.47	227.56	228.90	229.16	0.11	6.47
0116	Fruits & nuts	1445	179.10	185.54	185.79	186.02	186.89	0.47	4.35
0117	Vegetables, root crops & tubers	4 533	190.65	194.91	195.07	195.53	195.95	0.22	2.78
0118	Sugar, jam, honey & sweets	1 420	230.34	238.39	238.65	239.00	239.15	0.06	3.82
0119	Other food products	2 248	148.20	153.35	153.77	154.19	154.42	0.14	4.19
012	Non-alcoholic beverages	923	128.65	130.73	131.16	131.49	131.69	0.15	2.37
02	Alcoholic beverages, Tobacco and Narcotics	416	115.94	118.34	118.88	118.90	119.18	0.24	2.80
03	Clothing, textiles and footwear	6 911	128.60	136.29	136.39	137.16	137.64	0.35	7.03
031	Clothing, Garments and Tailoring services	5 434	126.68	134.80	134.88	135.46	135.77	0.22	7.18
032	Footwear	1 477	135.66	141.76	141.94	143.39	144.52	0.79	6.53
04	Housing, water, electricity, gas and other fuels	2 089	170.16	176.18	176.76	177.54	177.78	0.14	4.48
042	Actual rent	498	129.26	132.10	132.59	133.18	133.57	0.29	3.33
043	Electricity, gas and other fuels	1 431	186.08	193.75	194.43	195.32	195.53	0.11	5.08
05	Furnishings, household equipment and routine household maintenance	3 215	129.13	134.42	134.81	135.30	135.73	0.32	5.11
06	Health	728	130.72	134.02	134.05	134.12	134.18	0.04	2.65
07	Transport	2 706	225.68	228.69	229.05	227.06	225.86	-0.53	0.08
08	Communication	1 822	104.11	104.48	104.50	104.58	104.61	0.03	0.49
09	Recreation and culture	957	117.77	120.04	120.59	121.18	121.85	0.55	3.47
10	Education	918	108.42	109.19	109.23	109.23	109.23	0.00	0.75
11	Restaurants and Hotels	222	167.31	175.98	177.09	177.75	179.08	0.75	7.03
12	Miscellaneous goods and services	3 639	171.71	184.94	185.12	186.50	188.14	0.88	9.57
	<b>12 MONTH MOVING AVERAGE</b>		158.31	166.31	167.21	168.14	169.09	0.57	6.81
	<b>OVERALL INDEX</b>		162.64	171.82	172.41	173.32	174.10	0.45	7.05
	<b>FOOD AND NON-ALCOHOLIC BEVERAGES</b>		181.37	192.81	193.70	194.96	196.01	0.53	8.07
	<b>NON-FOOD PRODUCTS AND SERVICES</b>		138.47	144.73	144.94	145.41	145.84	0.29	5.32

In February 2016, the overall consumer Price Index was 173.32, a 0.91 percent increase over the January 2016 overall index of 172.41.

On an annual basis the overall index increased by 7.05 percent from March 2015 to March 2016. Food and Non Alcoholic Beverages increased by 8.07 percent whilst Non Food Products and Services rose by 5.32 percent.

From March 2015 to March 2016, within the Food and Non Alcoholic Beverages, 'Meat and meat products' increased by 13.49 percent, 'Fish and fish products' 10.43 percent and 'Bread and Cereal' 9.13 percent.

For the Non Food items, the major increases were recorded by 'Clothing Garments and Tailoring services', 'Footwear' and 'Electricity Gas and other Fuels' which rose by 7.18 percent, 6.53 percent and 5.08 percent respectively.

During the months of February 2016 to March 2016, the 'Meat and meat products', 'Fish and Fish products', 'Bread and cereal products', and 'Fruits and Nuts' show the highest increase in percentage of 0.97 percent, 0.71 percent, 0.66 percent and 0.47 percent respectively.

Using the 12 months-moving-average measure, inflation rate was about 6.81 percent, compared to 6.78 percent which was recorded in February 2016.

**Overall Annual Inflation Rate (over 12 months - Comparison with the same month for the previous year)**

Year	Jan	Feb	March	April	May	Jun	July	Aug	Sept	Oct	Nov	Dec
2013	5.2	5.3	5.4	5.6	5.7	5.8	5.9	6.0	6.1	6.1	5.9	5.5
2014	5.4	5.6	5.6	5.7	5.6	5.4	5.6	5.7	6.3	6.6	6.8	6.9
2015	7.0	6.8	6.7	6.7	7.2	7.2	6.9	6.9	6.6	6.5	6.6	6.7
2016	6.7	6.9	7.1									

**Figure1: Annual changes – Comparison with the same month of the previous year. (Mar 2015 –Mar 2016)**

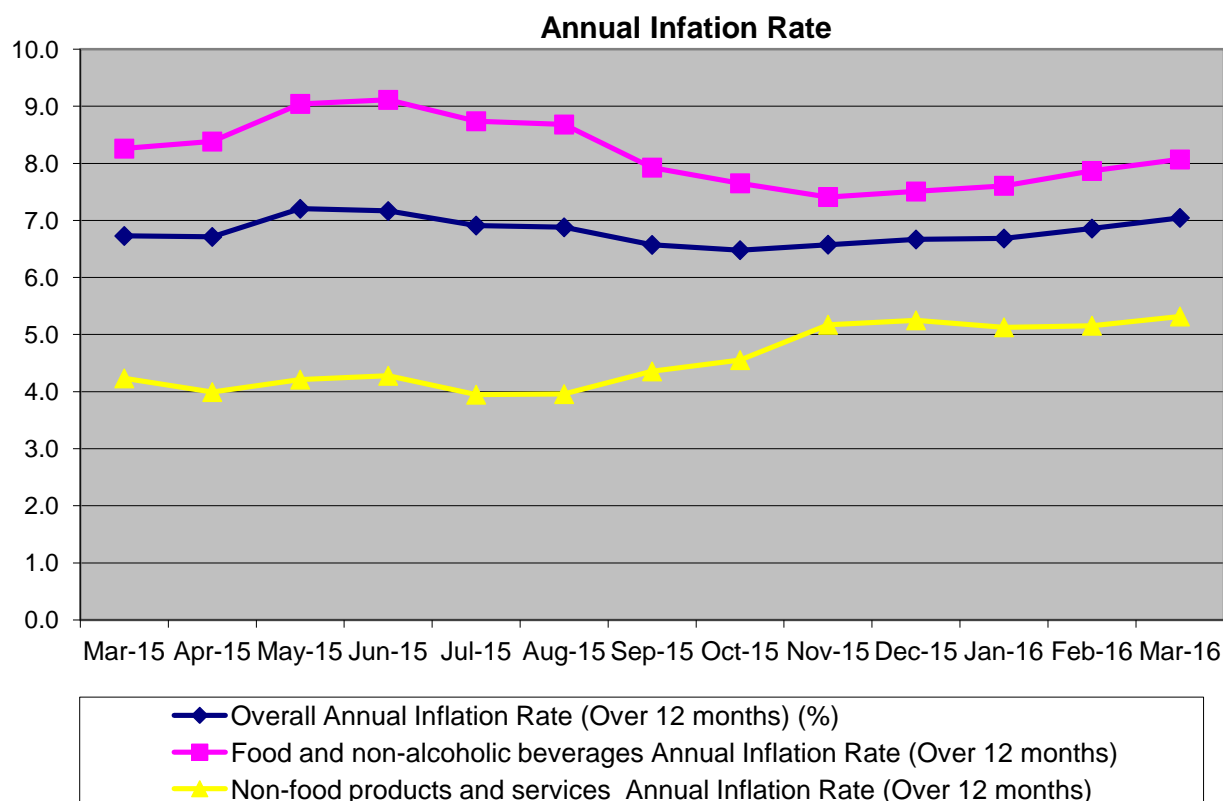
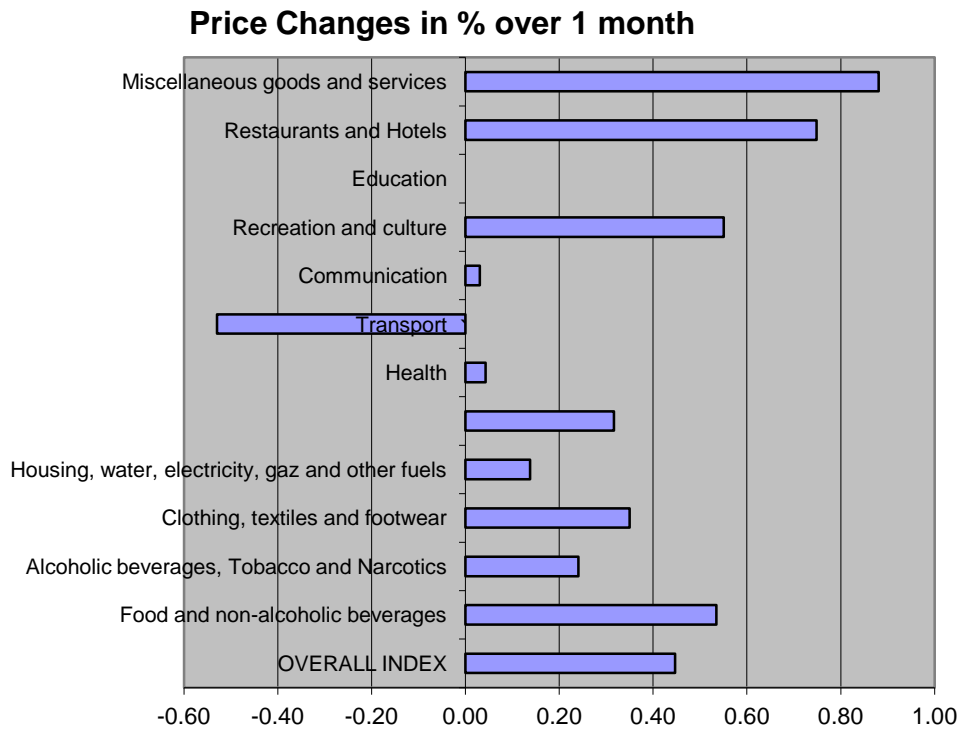


Figure 2: Monthly changes - Comparison with the previous month: January 2015 to February 2016



#### CONTACTS

The Gambia Bureau of Statistics (GBOS)  
 Kanifing Institutional Layout  
 P.O.Box 3504 Serekunda  
 Tel. (220) 4394529  
 Fax. (220) 437 7848  
 Web site: [www.gbos.gov.gm](http://www.gbos.gov.gm)  
 Publication Director: Mr. Nyakasi Sanyang, Statistician- General  
 Publication Editor: Mr Ousman Dibba, Director Economics Division GBOS  
 email: [odibba@gbos.gov.gm](mailto:odibba@gbos.gov.gm)  
 Statistician in charge of CPI: Fatou Darboe  
 email: [fdarboe@gbos.gov.gm](mailto:fdarboe@gbos.gov.gm)