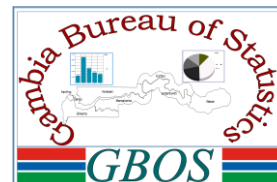




REPUBLIC OF THE GAMBIA

THE GAMBIA CONSUMER PRICE INDEX (CPI) May 2016



CAUTION

The Gambia Bureau of Statistics is very pleased to deliver to users the new Consumer Price Index (CPI) based in 2004 that replace the previous one which was based in 1974. The CPI is published every month by the 15th.

		<i>Changes in % over</i>							
	ALL ITEMS(NEW SERIES; 2004=100)	Weights	May-15	Feb-16	Mar-16	Apr-2016	May-16	1 month	Over 12 Months
	OVERALL INDEX	61841	164.83	173.32	174.10	174.99	176.30	0.75	6.96
01	Food and non-alcoholic beverages	33837	184.24	194.96	196.01	197.19	199.01	0.92	8.02
011	Food	32 914	185.77	196.73	197.80	199.00	200.87	0.94	8.13
0111	Bread & Cereals	7 891	180.63	191.01	192.26	194.14	196.07	1.00	8.55
0112	Meat	8 217	192.77	213.07	215.13	216.97	219.81	1.31	14.03
0113	Fish	2 226	151.05	162.58	163.73	164.66	166.03	0.83	9.92
0114	Milk, Cheese and Eggs	1 462	145.75	151.00	151.61	153.28	153.59	0.20	5.37
0115	Oils and fats	3 469	217.20	228.90	229.16	229.78	232.84	1.34	7.20
0116	Fruits & nuts	1445	181.58	186.02	186.89	187.45	188.33	0.47	3.72
0117	Vegetables, root crops & tubers	4 533	192.21	195.53	195.95	196.33	196.91	0.29	2.44
0118	Sugar, jam, honey & sweets	1 420	232.74	239.00	239.15	239.30	240.01	0.30	3.13
0119	Other food products	2 248	150.81	154.19	154.42	154.56	156.23	1.08	3.59
012	Non-alcoholic beverages	923	129.38	131.49	131.69	132.15	132.50	0.26	2.41
02	Alcoholic beverages, Tobacco and Narcotics	416	116.07	118.90	119.18	119.58	119.77	0.16	3.19
03	Clothing, textiles and footwear	6 911	129.56	137.16	137.64	138.40	139.41	0.73	7.60
031	Clothing, Garments and Tailoring services	5 434	127.69	135.46	135.77	138.40	137.47	-0.67	7.66
032	Footwear	1 477	136.43	143.39	144.52	146.0	146.54	0.37	7.41
04	Housing, water, electricity, gas and other fuels	2 089	171.75	177.54	177.78	178.1	178.31	0.12	3.82
042	Actual rent	498	129.36	133.18	133.57	133.6	133.77	0.15	3.41
043	Electricity, gas and other fuels	1 431	188.36	195.32	195.53	196.0	196.23	0.13	4.18
05	Furnishings, household equipment and routine household maintenance	3 215	129.88	135.30	135.73	137.2	137.41	0.19	5.79
06	Health	728	131.54	134.12	134.18	134.4	134.40	0.00	2.18
07	Transport	2 706	226.58	227.06	225.86	222.8	222.76	-0.02	-1.69
08	Communication	1 822	104.28	104.58	104.61	104.6	104.66	0.02	0.36
09	Recreation and culture	957	118.28	121.18	121.85	122.6	123.34	0.63	4.27
10	Education	918	108.45	109.23	109.23	109.2	109.15	0.00	0.65
11	Restaurants and Hotels	222	171.00	177.75	179.08	181.0	182.42	0.77	6.68
12	Miscellaneous goods and services	3 639	173.82	186.50	188.14	189.2	191.36	1.14	10.09
	12 MONTH MOVING AVERAGE		160.09	168.14	169.09	170.05	171.01	0.56	6.82
	OVERALL INDEX		164.83	173.32	174.10	174.99	176.30	0.75	6.96
	FOOD AND NON-ALCOHOLIC BEVERAGES		184.24	194.96	196.01	197.19	199.01	0.92	8.02
	NON-FOOD PRODUCTS AND SERVICES		139.79	145.41	145.84	146.35	147.00	0.45	5.16

On an annual basis the overall index increased by 6.96 percent from April 2015 to April 2016. Food and Non Alcoholic Beverages increased by 8.02 percent whilst Non Food Products and Services rose by 5.16 percent.

From April 2015 to April 2016, within the Food and Non Alcoholic Beverages, 'Meat and meat products' increased by 14.03 percent, 'Fish and fish products' 9.92 percent and 'Bread and Cereal' 8.55 percent.

For the Non Food items, the major increases were recorded by 'Clothing Garments and Tailoring services', 'Footwear' and 'Electricity Gas and other Fuels' which rose by 7.66 percent, 7.41 percent and 4.18 percent respectively.

During the months of April 2016 to May 2016, the 'Oils and Fats, 'Meat and meat products', 'Bread and cereal products', and 'Fish and Fish products, show the highest increase in percentage of 1.34 percent, 1.31 percent, 1.00 percent and 0.83 percent respectively.

Using the 12 months-moving-average measure, inflation rate was about 6.82 percent, compared to 6.84 percent which was recorded in April 2016.

Overall Annual Inflation Rate (over 12 months - Comparison with the same month for the previous year)

Year	Jan	Feb	March	April	May	Jun	July	Aug	Sept	Oct	Nov	Dec
2013	5.2	5.3	5.4	5.6	5.7	5.8	5.9	6.0	6.1	6.1	5.9	5.5
2014	5.4	5.6	5.6	5.7	5.6	5.4	5.6	5.7	6.3	6.6	6.8	6.9
2015	7.0	6.8	6.7	6.7	7.2	7.2	6.9	6.9	6.6	6.5	6.6	6.7
2016	6.7	6.9	7.1	7.1	7.0							

Figure1: Annual changes – Comparison with the same month of the previous year. (May 2015 –May 2016)

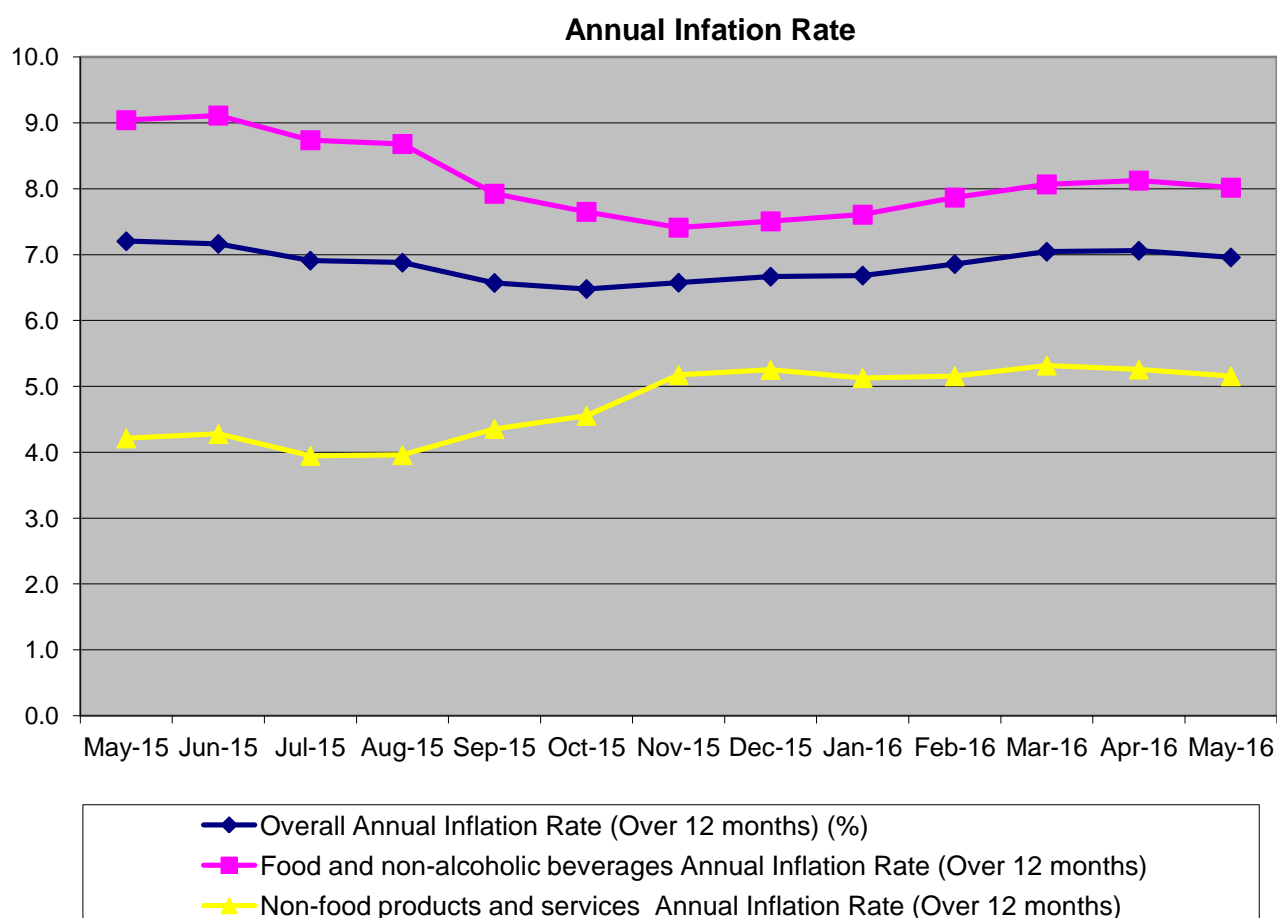
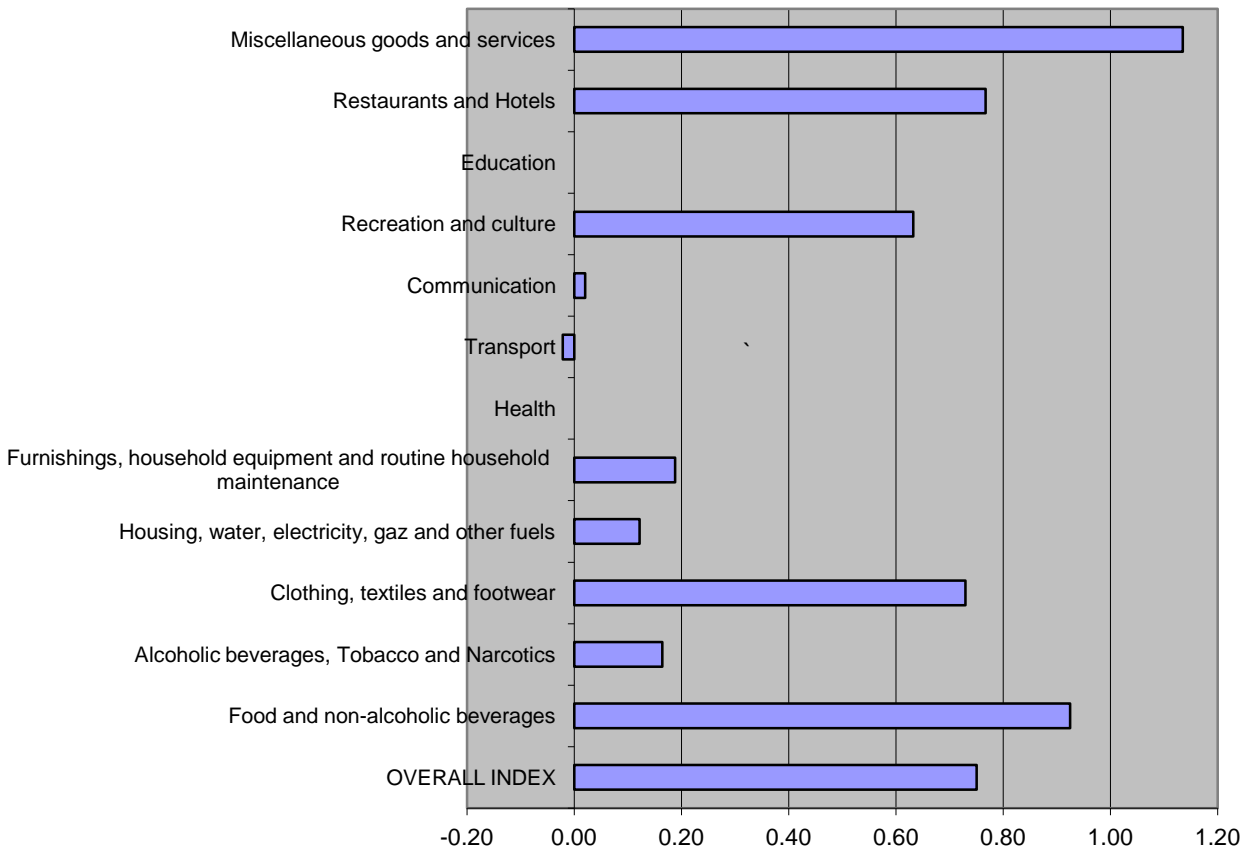


Figure 2: Monthly changes - Comparison with the previous month: March 2016 to April 2016

Price Changes in % over 1 month



CONTACTS

The Gambia Bureau of Statistics (GBOS)
 Kanifing Institutional Layout
 P.O.Box 3504 Serekunda
 Tel. (220) 4394529
 Fax. (220) 437 7848
 Web site: www.gbos.gov.gm
 Publication Director: Mr. Nyakasi Sanyang, Statistician- General
 Publication Editor: Mr Ousman Dibba, Director Economics Division GBOS
 email: odibba@gbos.gov.gm
 Statistician in charge of CPI: Fatou Darboe
 email: fdarboe@gbos.gov.gm